

# SEA CHALLENGER

SPECIAL PURPOSE SHIP / JACK-UP VESSEL  
A2SEA

<b>FREQUENCY VESSEL NAME</b> TBD		
<b>WX INFORMATION</b> ON REQUEST FROM BRIDGE		<b>LIGHTING</b> ON REQUEST TO BRIDGE
<b>HELIDECK HEIGHT</b> VARIABLE	<b>MTOW</b> 12,8 t	<b>D-VALUE</b> 22,20 m
<b>LANDING NET</b> 15 x 15 m		<b>HAPI</b> N/A
<b>HELIDECK POSITION ON INSTALLATION</b> BOW STARBOARD SIDE		
<b>HIGEST OBSTACLES ON INSTALLATION</b>		
<b>JACK-UP COLUMNS</b> TBD	<b>CRANE</b> TBD	<b>ANTENNA MAST</b> TBD
<b>REFUELLING FACILITY</b> N/A		<b>GROUND POWER UNIT</b> N/A



## NON COMPLIANCES

- NIL

## LIMITATIONS

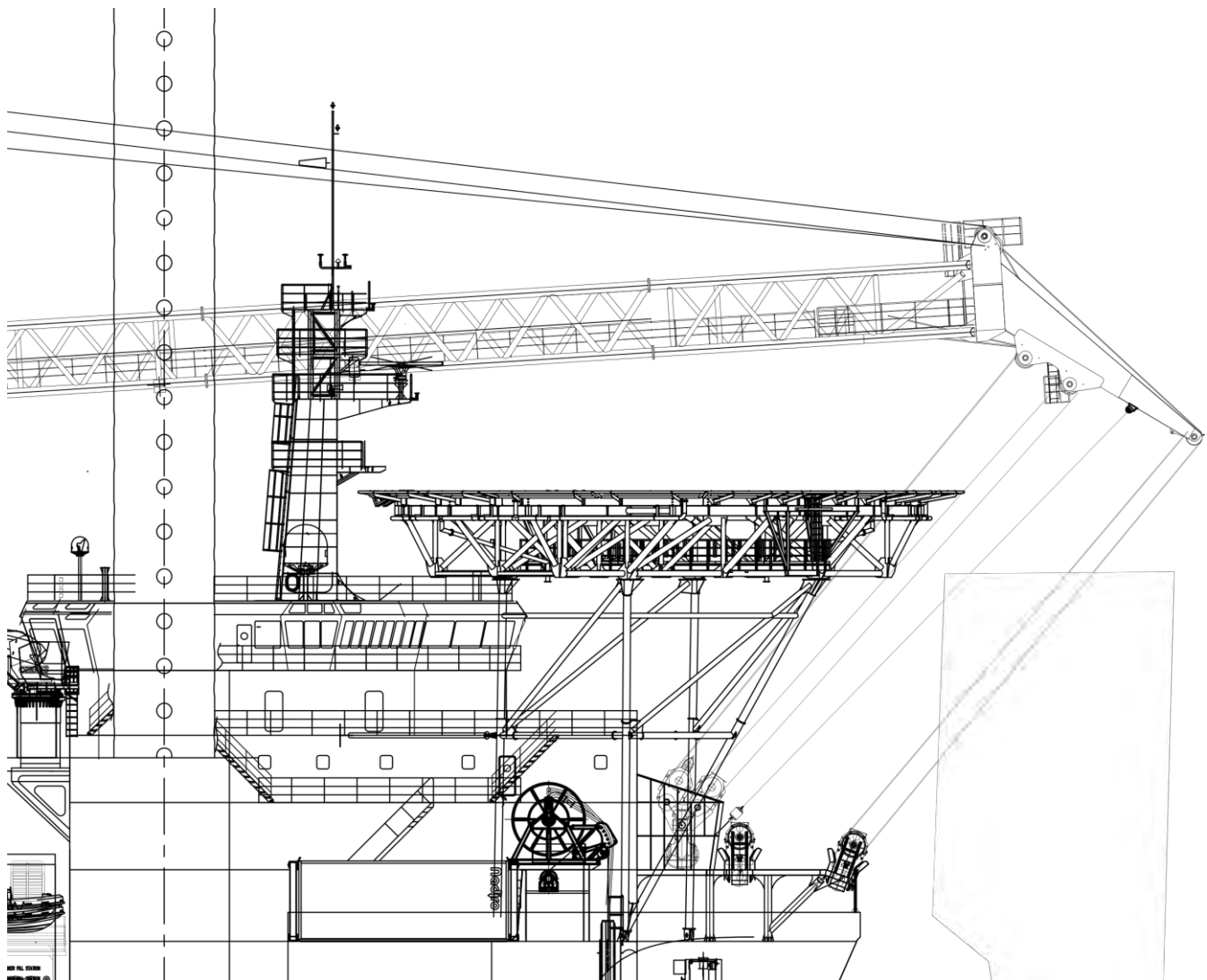
- FLIGHT OPS ON CAPTAIN'S DISCRETION
- NO FLIGHT OPS WHILE AFLOAT
- CRANE MUST BE TURNED AWAY OUT OF 210° OBSTACLE-FREE SECTOR FOR FLIGHT OPS
- VFR ONLY
- NIGHT FLIGHT OPS ONLY WITH ALL HELIDECK AND OBSTACLE LIGHTS FUNCTIONING
- OVERFLIGHT OF VESSEL PROHIBITED

# SEA CHALLENGER

SPECIAL PURPOSE SHIP / JACK-UP VESSEL  
A2SEA

<b>FREQUENCY VESSEL NAME</b> TBD		
<b>WX INFORMATION</b> ON REQUEST FROM BRIDGE		<b>LIGHTING</b> ON REQUEST TO BRIDGE
<b>HELIDECK HEIGHT</b> VARIABLE	<b>MTOW</b> 12,8 t	<b>D-VALUE</b> 22,20 m
<b>LANDING NET</b> 15 x 15 m		<b>HAPI</b> N/A
<b>HELIDECK POSITION ON INSTALLATION</b> BOW STARBOARD SIDE		
<b>HIGEST OBSTACLES ON INSTALLATION</b>		
<b>JACK-UP COLUMNS</b> TBD	<b>CRANE</b> TBD	<b>ANTENNA MAST</b> TBD
<b>REFUELLING FACILITY</b> N/A		<b>GROUND POWER UNIT</b> N/A

**INSTALLATION PROFILE VIEW**

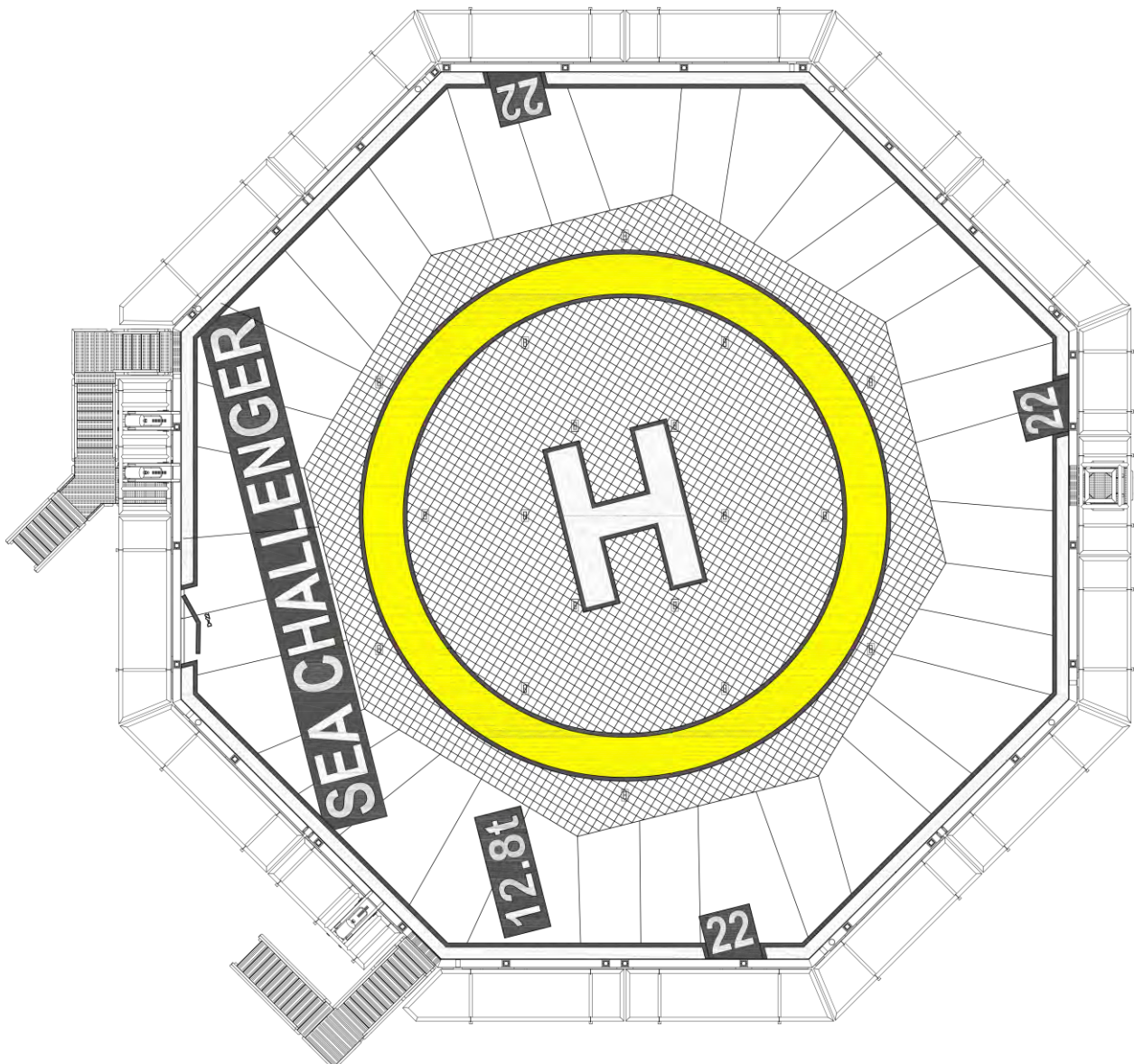


# SEA CHALLENGER

SPECIAL PURPOSE SHIP / JACK-UP VESSEL  
A2SEA

<b>FREQUENCY VESSEL NAME</b> TBD		
<b>WX INFORMATION</b> ON REQUEST FROM BRIDGE		<b>LIGHTING</b> ON REQUEST TO BRIDGE
<b>HELIDECK HEIGHT</b> VARIABLE	<b>MTOW</b> 12,8 t	<b>D-VALUE</b> 22,20 m
<b>LANDING NET</b> 15 x 15 m		<b>HAPI</b> N/A
<b>HELIDECK POSITION ON INSTALLATION</b> BOW STARBOARD SIDE		
<b>HIGEST OBSTACLES ON INSTALLATION</b>		
<b>JACK-UP COLUMNS</b> TBD	<b>CRANE</b> TBD	<b>ANTENNA MAST</b> TBD
<b>REFUELLING FACILITY</b> N/A		<b>GROUND POWER UNIT</b> N/A

**HELIDECK TOP VIEW**



# SEA CHALLENGER

SPECIAL PURPOSE SHIP / JACK-UP VESSEL  
A2SEA

<b>FREQUENCY VESSEL NAME</b> TBD		
<b>WX INFORMATION</b> ON REQUEST FROM BRIDGE		<b>LIGHTING</b> ON REQUEST TO BRIDGE
<b>HELIDECK HEIGHT</b> VARIABLE	<b>MTOW</b> 12,8 t	<b>D-VALUE</b> 22,20 m
<b>LANDING NET</b> 15 x 15 m		<b>HAPI</b> N/A
<b>HELIDECK POSITION ON INSTALLATION</b> BOW STARBOARD SIDE		
<b>HIGEST OBSTACLES ON INSTALLATION</b>		
<b>JACK-UP COLUMNS</b> TBD	<b>CRANE</b> TBD	<b>ANTENNA MAST</b> TBD
<b>REFUELLING FACILITY</b> N/A		<b>GROUND POWER UNIT</b> N/A

## REMARKS

- CONTACT FREQUENCY TO BE SPECIFIED BY EACH PROJECT
- ACTUAL HELIDECK HEIGHT TO BE CHECKED FOR EACH LOCATION
- ACTUAL VESSEL ORIENTATION TO BE TAKEN FROM HELIDECK STATUS REPORT
- DUE TO HELIDECK LANDING NET – CAUTION SHALL BE TAKEN ESPECIALLY FOR HELICOPTERS FITTED WITH SKIDS TO NOT BECOME ENTANGLED
- HELICOPTER CREWS TO CHECK CRANE IS TURNED AWAY OUT OF 210° OBSTACLE-FREE SECTOR FOR FLIGHT OPS
- SAFETY PERIMETER NET: 1.50 METRES
- MARKINGS AND LIGHTING IN ACCORDANCE WITH ICAO ANNEX 14 VOL.2 / CAP 437