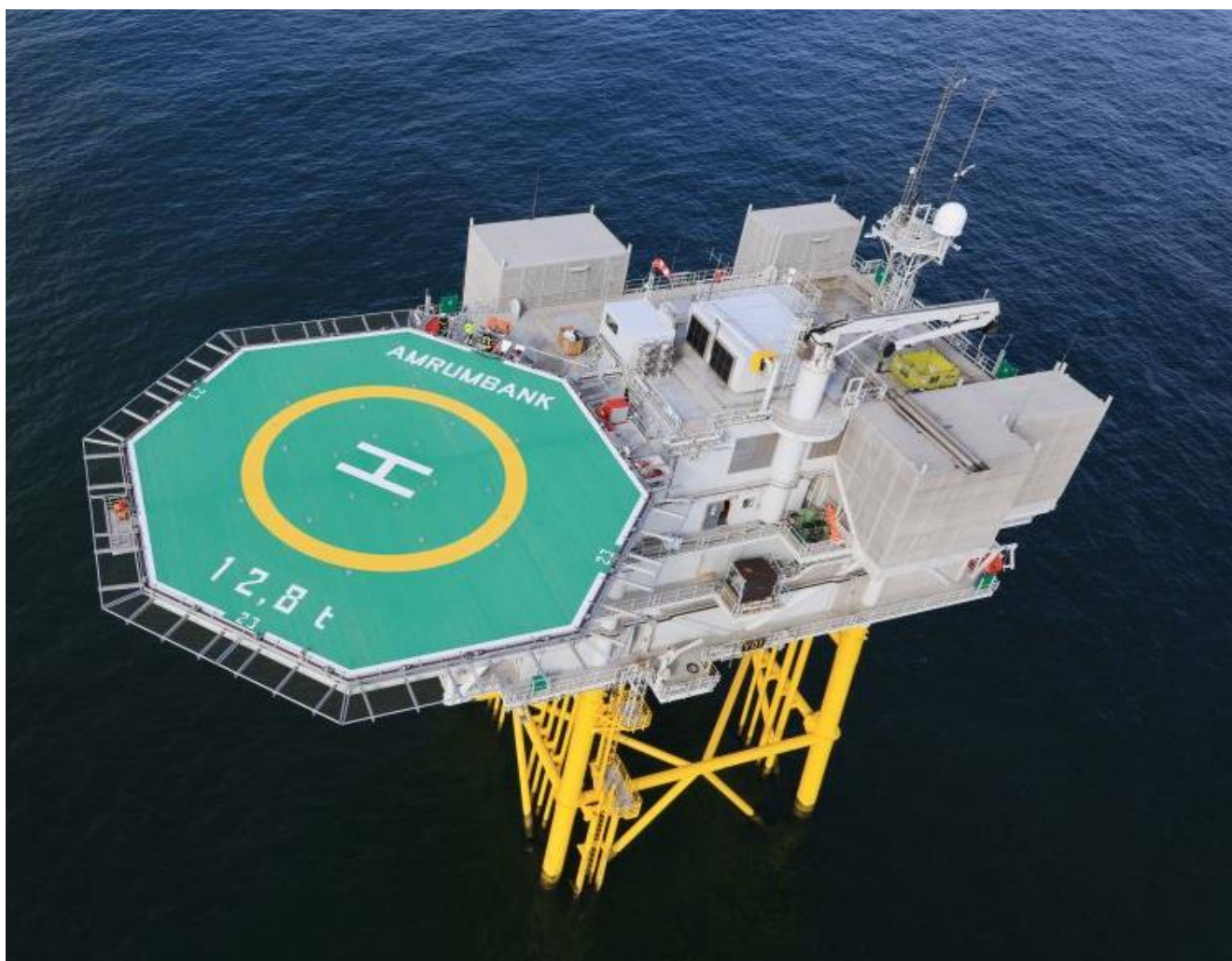


AMRUMBANK WEST

E.ON KRAFTWERKE GMBH
NORMALLY UNATTENDED INSTALLATION (NUI)

N 54° 31,19'		E 007° 44,09'	
BREMEN INFORMATION 128,525 MHz		AMRUMBANK TRAFFIC 151,290 MHz	
WEATHER INFORMATION (7x) 131,465 MHz		LIGHTING (5x / 3x) 131,465 MHz	
HELIDECK HEIGHT 131 FT MSL	MTOW 12,8 t	D-VALUE 23 m	
LANDING NET N/A		HAPI U/S	
APPROACH / DEPARTURE CORRIDOR 090° / 270° VAR 1,7°E (2015)			
HIGHEST OBSTACLE ON INSTALLATION 177 FT MSL (WINDSOCK / MAST)		HIGHEST OBSTACLE IN THE VICINITY 492 FT MSL (WTG)	
REFUELLING FACILITY N/A		GROUND POWER UNIT YES	



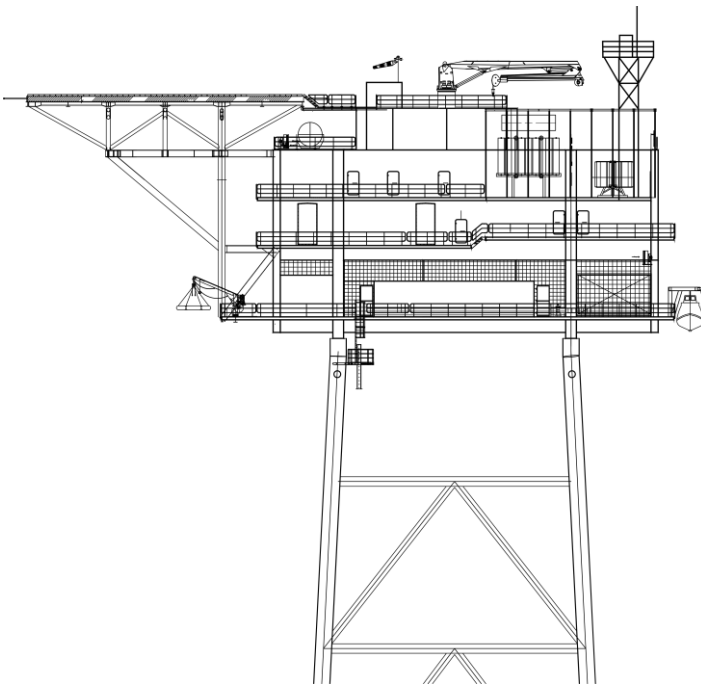
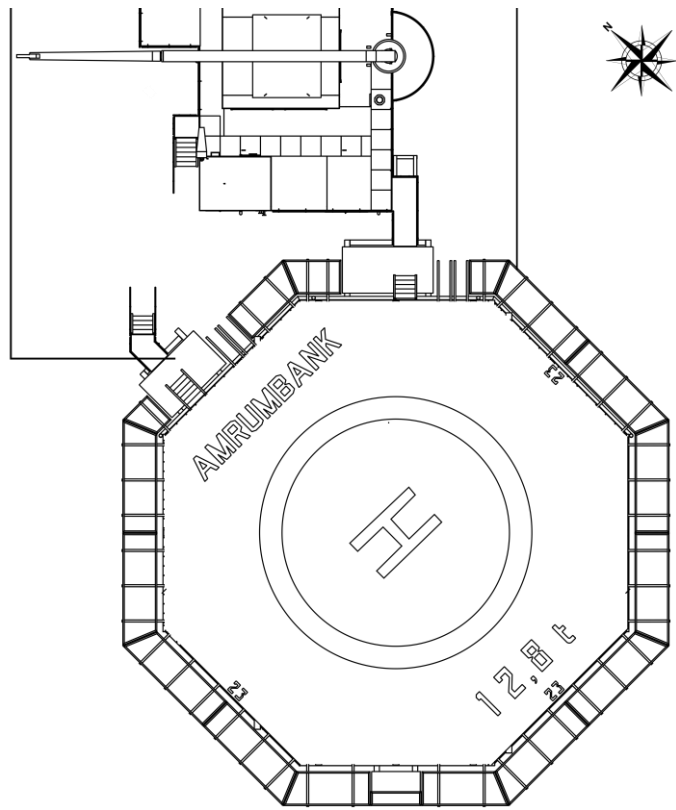
AMRUMBANK WEST

E.ON KRAFTWERKE GMBH
NORMALLY UNATTENDED INSTALLATION (NUI)

N 54° 31,19'		E 007° 44,09'	
BREMEN INFORMATION 128,525 MHz		AMRUMBANK TRAFFIC 151,290 MHz	
WEATHER INFORMATION (7x) 131,465 MHz		LIGHTING (5x / 3x) 131,465 MHz	
HELIDECK HEIGHT 131 FT MSL	MTOW 12,8 t	D-VALUE 23 m	
LANDING NET N/A		HAPI U/S	
APPROACH / DEPARTURE CORRIDOR 090° / 270° VAR 1,7°E (2015)			
HIGHEST OBSTACLE ON INSTALLATION 177 FT MSL (WINDSOCK / MAST)		HIGHEST OBSTACLE IN THE VICINITY 492 FT MSL (WTG)	
REFUELLING FACILITY N/A		GROUND POWER UNIT YES	
NON COMPLIANCES <ul style="list-style-type: none"> • NIL 		LIMITATIONS <ul style="list-style-type: none"> • TEMPORARILY VFR DAY ONLY 	
REMARKS <ul style="list-style-type: none"> • BE AWARE OF SURROUNDING WTG IN CLOSE PROXIMITY TO HELIDECK 			

AMRUMBANK WEST

E.ON KRAFTWERKE GMBH
 NORMALLY UNATTENDED INSTALLATION (NUI)

N 54° 31,19'		E 007° 44,09'	
BREMEN INFORMATION 128,525 MHz		AMRUMBANK TRAFFIC 151,290 MHz	
WEATHER INFORMATION (7x) 131,465 MHz		LIGHTING (5x / 3x) 131,465 MHz	
HELIDECK HEIGHT 131 FT MSL	MTOW 12,8 t	D-VALUE 23 m	
LANDING NET N/A		HAPI U/S	
APPROACH / DEPARTURE CORRIDOR 090° / 270° VAR 1,7°E (2015)			
HIGHEST OBSTACLE ON INSTALLATION 177 FT MSL (WINDSOCK / MAST)		HIGHEST OBSTACLE IN THE VICINITY 492 FT MSL (WTG)	
REFUELLING FACILITY N/A		GROUND POWER UNIT YES	
INSTALLATION PROFILE VIEW		HELIDECK TOP VIEW	
			

AMRUMBANK WEST

E.ON KRAFTWERKE GMBH
 NORMALLY UNATTENDED INSTALLATION (NUI)

N 54° 31,19'		E 007° 44,09'	
BREMEN INFORMATION 128,525 MHz		AMRUMBANK TRAFFIC 151,290 MHz	
WEATHER INFORMATION (7x) 131,465 MHz		LIGHTING (5x / 3x) 131,465 MHz	
HELIDECK HEIGHT 131 FT MSL	MTOW 12,8 t		D-VALUE 23 m
LANDING NET N/A		HAPI U/S	
APPROACH / DEPARTURE CORRIDOR 090° / 270° VAR 1,7°E (2015)			
HIGHEST OBSTACLE ON INSTALLATION 177 FT MSL (WINDSOCK / MAST)		HIGHEST OBSTACLE IN THE VICINITY 492 FT MSL (WTG)	
REFUELLING FACILITY N/A		GROUND POWER UNIT YES	
VFR DAY CORRIDOR ENTRY / EXIT WAYPOINTS			
AWG W: N 54° 31,19' E 007° 40,56'		AWG E: N 54° 31,19' E 007° 47,62'	

WINDFARM LAYOUT

