

# BORKUM RIFFGRUND 2

HLD IDENTIFICATION  
**BKR02-Z02**

ICAO IDENTIFIER  
**N/A**

OSS SIDE IDENTIFICATION  
**BKR02-Z02**

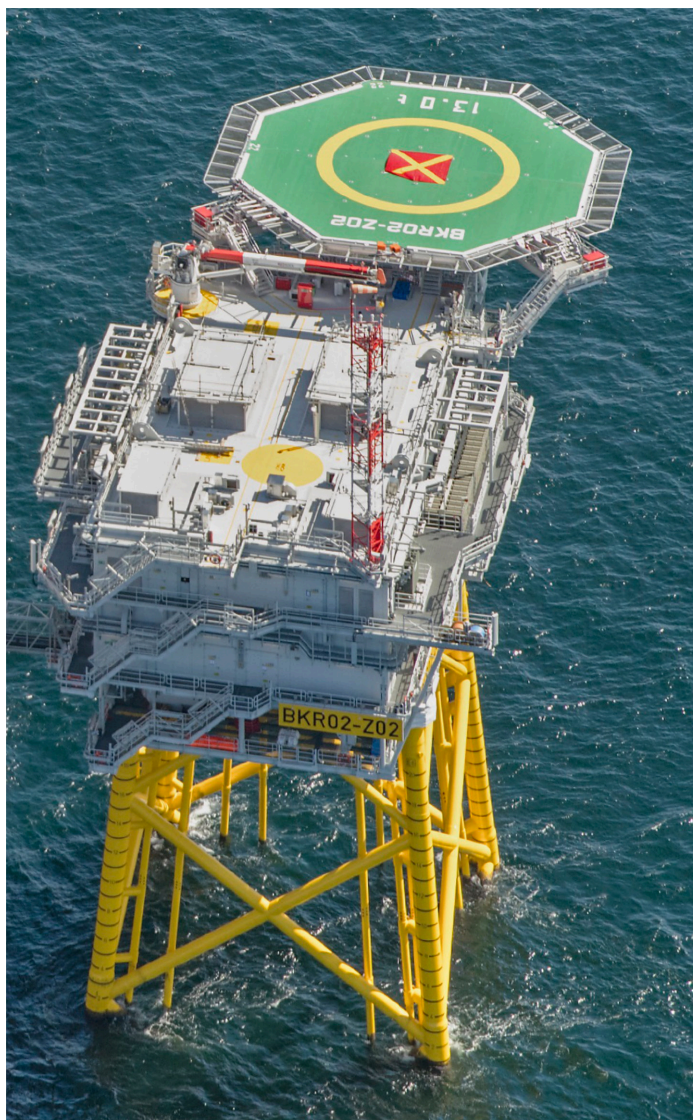
**FIXED NORMALLY UNATTENDED INSTALLATION**  
**BORKUM RIFFGRUND 2 OFFSHORE WIND FARM GMBH & CO.OHG**

HLD REFERENCE POINT

**N 53° 57.42'**

**E 006° 28.45'**

<b>BREMEN INFORMATION</b> 128.525 MHz			<b>AMSTERDAM INFORMATION</b> 119.175 MHz			<b>ØRSTED OPERATIONS</b> 131.905 MHz		
<b>WEATHER INFORMATION</b> 129.115 MHz 7x				<b>LIGHTING &amp; DIMMING</b> 129.115 MHz 3x 100%      4x 30% (10%)      5x 10% (3%)				
<b>HELIDECK HEIGHT</b> 143 ft MSL			<b>D-VALUE</b> 22.25 m			<b>MTOW</b> 13 t		
<b>APPROACH / DEPARTURE CORRIDOR</b>								
SOUTHWEST: <b>052° / 232°</b>				EAST: <b>089° / 269°</b>				
DECK HEADING <b>178°</b>								
<b>HIGHEST OBSTACLE ON INSTALLATION</b> 40 ft ABOVE HLD (ANTENNA MAST)				<b>HIGHEST OBSTACLE IN THE VICINITY</b> 646 ft MSL (WTG)				
<b>REFUELLING FACILITY</b> N/A		<b>GROUND POWER UNIT</b> YES		<b>LANDING NET</b> N/A		<b>STATUS LIGHT</b> N/A		
<b>FIRE FIGHTING FACILITIES</b>								
<b>DIFFS</b> AUTO + MAN + REMOTE ACTIVATION		<b>2x HYDRANT</b> SEMI-RIGID HOSES (25 m)		<b>2x 20 kg CO<sub>2</sub></b>		<b>2x 25 kg DRY POWDER</b>		



# BORKUM RIFFGRUND 2

HLD IDENTIFICATION  
**BKR02-Z02**

ICAO IDENTIFIER  
**N/A**

OSS SIDE IDENTIFICATION  
**BKR02-Z02**

FIXED NORMALLY UNATTENDED INSTALLATION  
BORKUM RIFFGRUND 2 OFFSHORE WIND FARM GMBH & CO.OHG

HLD REFERENCE POINT

N 53° 57.42'

E 006° 28.45'

<b>BREMEN INFORMATION</b> 128.525 MHz			<b>AMSTERDAM INFORMATION</b> 119.175 MHz			<b>ØRSTED OPERATIONS</b> 131.905 MHz			
<b>WEATHER INFORMATION</b> 129.115 MHz 7x				<b>LIGHTING &amp; DIMMING</b> 129.115 MHz 3x 100%      4x 30% (10%)      5x 10% (3%)					
<b>HELIDECK HEIGHT</b> 143 ft MSL			<b>D-VALUE</b> 22.25 m			<b>MTOW</b> 13 t			
<b>APPROACH / DEPARTURE CORRIDOR</b>									
SOUTHWEST: 052° / 232°				EAST: 089° / 269° DECK HEADING 178°					
<b>HIGHEST OBSTACLE ON INSTALLATION</b> 40 ft ABOVE HLD (ANTENNA MAST)				<b>HIGHEST OBSTACLE IN THE VICINITY</b> 646 ft MSL (WTG)					
<b>REFUELLING FACILITY</b> N/A		<b>GROUND POWER UNIT</b> YES		<b>LANDING NET</b> N/A		<b>STATUS LIGHT</b> N/A			
<b>FIRE FIGHTING FACILITIES</b>									
<b>DIFFS</b> AUTO + MAN + REMOTE ACTIVATION		<b>2x HYDRANT</b> SEMI-RIGID HOSES (25 m)		<b>2x 20 kg CO<sub>2</sub></b>			<b>2x 25 kg DRY POWDER</b>		
<b>NON - COMPLIANCES</b>  • NIL				<b>LIMITATIONS</b>  • TEMPORARILY VFR DAY ONLY					
<b>REMARKS</b>									
<ul style="list-style-type: none"> <li>• CONTACT ØRSTED OPERATIONS / HLO PRIOR TO ENTERING OWF AND FOR FURTHER CLEARANCES</li> <li>• BE AWARE OF WTG IN CLOSE PROXIMITY TO HELIDECK</li> <li>• ORIENTATION OF HELIDECK IDENTIFICATION MARKING NOT ALIGNED WITH PREFERRED APPROACH / DEPARTURE DIRECTIONS (~2°)</li> <li>• VFR NIGHT NOT PERMITTED IN DUTCH AIRSPACE</li> </ul>									

# BORKUM RIFFGRUND 2

HLD IDENTIFICATION  
**BKR02-Z02**

ICAO IDENTIFIER  
**N/A**

OSS SIDE IDENTIFICATION  
**BKR02-Z02**

**FIXED NORMALLY UNATTENDED INSTALLATION**  
**BORKUM RIFFGRUND 2 OFFSHORE WIND FARM GMBH & CO.OHG**

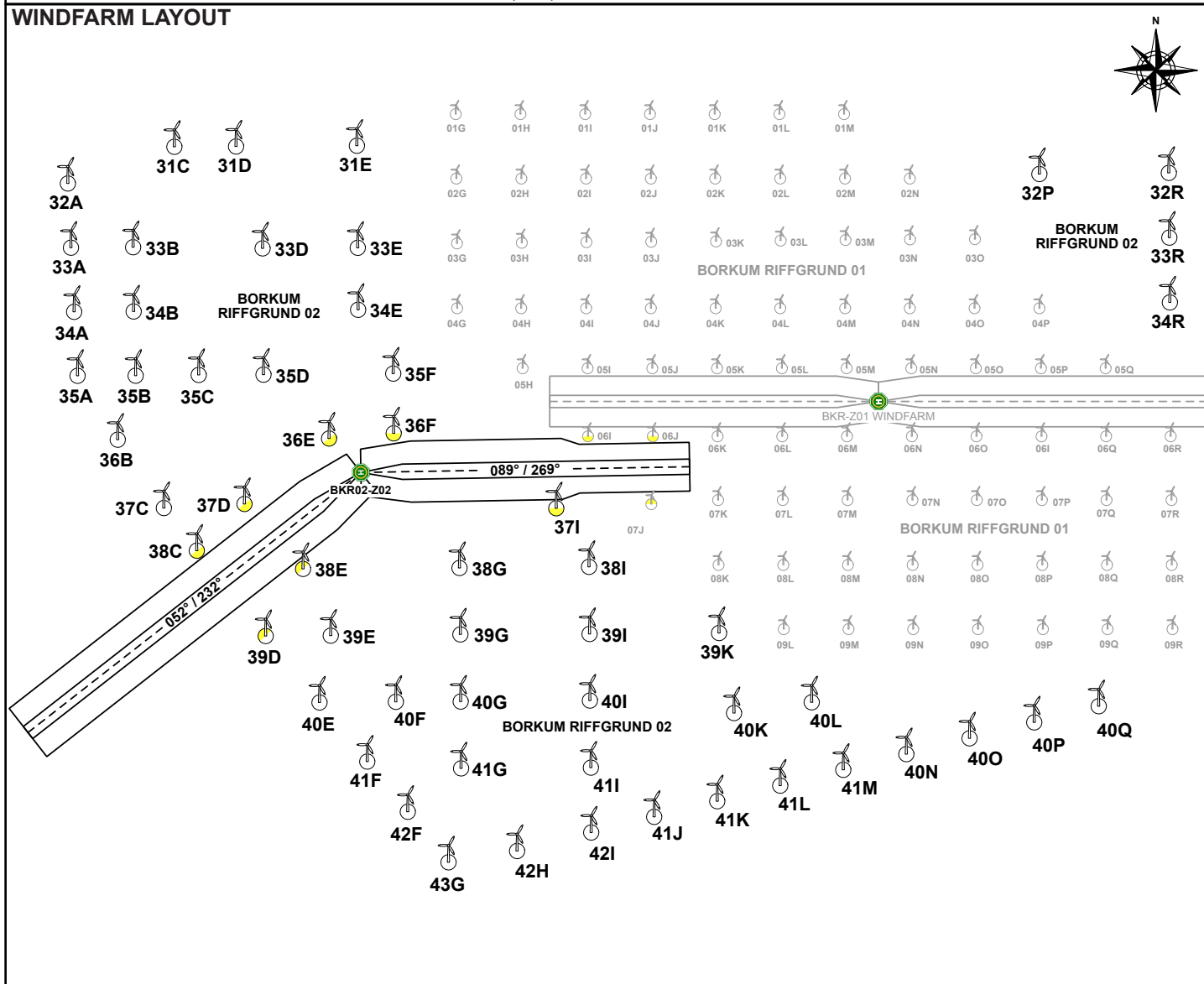
HLD REFERENCE POINT

**N 53° 57.42'**

**E 006° 28.45'**

<b>BREMEN INFORMATION</b> 128.525 MHz		<b>AMSTERDAM INFORMATION</b> 119.175 MHz		<b>ØRSTED OPERATIONS</b> 131.905 MHz	
<b>WEATHER INFORMATION</b> 129.115 MHz 7x			<b>LIGHTING &amp; DIMMING</b> 129.115 MHz 3x 100%      4x 30% (10%)      5x 10% (3%)		
<b>HELIDECK HEIGHT</b> 143 ft MSL		<b>D-VALUE</b> 22.25 m		<b>MTOW</b> 13 t	
<b>APPROACH / DEPARTURE CORRIDOR</b>					
SOUTHWEST: <b>052° / 232°</b>			EAST: <b>089° / 269°</b>		
<i>DECK HEADING 178°</i>					
<b>HIGHEST OBSTACLE ON INSTALLATION</b> 40 ft ABOVE HLD (ANTENNA MAST)			<b>HIGHEST OBSTACLE IN THE VICINITY</b> 646 ft MSL (WTG)		
<b>REFUELLING FACILITY</b> N/A	<b>GROUND POWER UNIT</b> YES		<b>LANDING NET</b> N/A		<b>STATUS LIGHT</b> N/A

FIRE FIGHTING FACILITIES			
<b>DIFFS</b> AUTO + MAN + REMOTE ACTIVATION	<b>2x HYDRANT</b> SEMI-RIGID HOSES (25 m)	<b>2x 20 kg CO<sub>2</sub></b>	<b>2x 25 kg DRY POWDER</b>



# BORKUM RIFFGRUND 2

HLD IDENTIFICATION  
**BKR02-Z02**

ICAO IDENTIFIER  
**N/A**

OSS SIDE IDENTIFICATION  
**BKR02-Z02**

FIXED NORMALLY UNATTENDED INSTALLATION  
BORKUM RIFFGRUND 2 OFFSHORE WIND FARM GMBH & CO.OHG

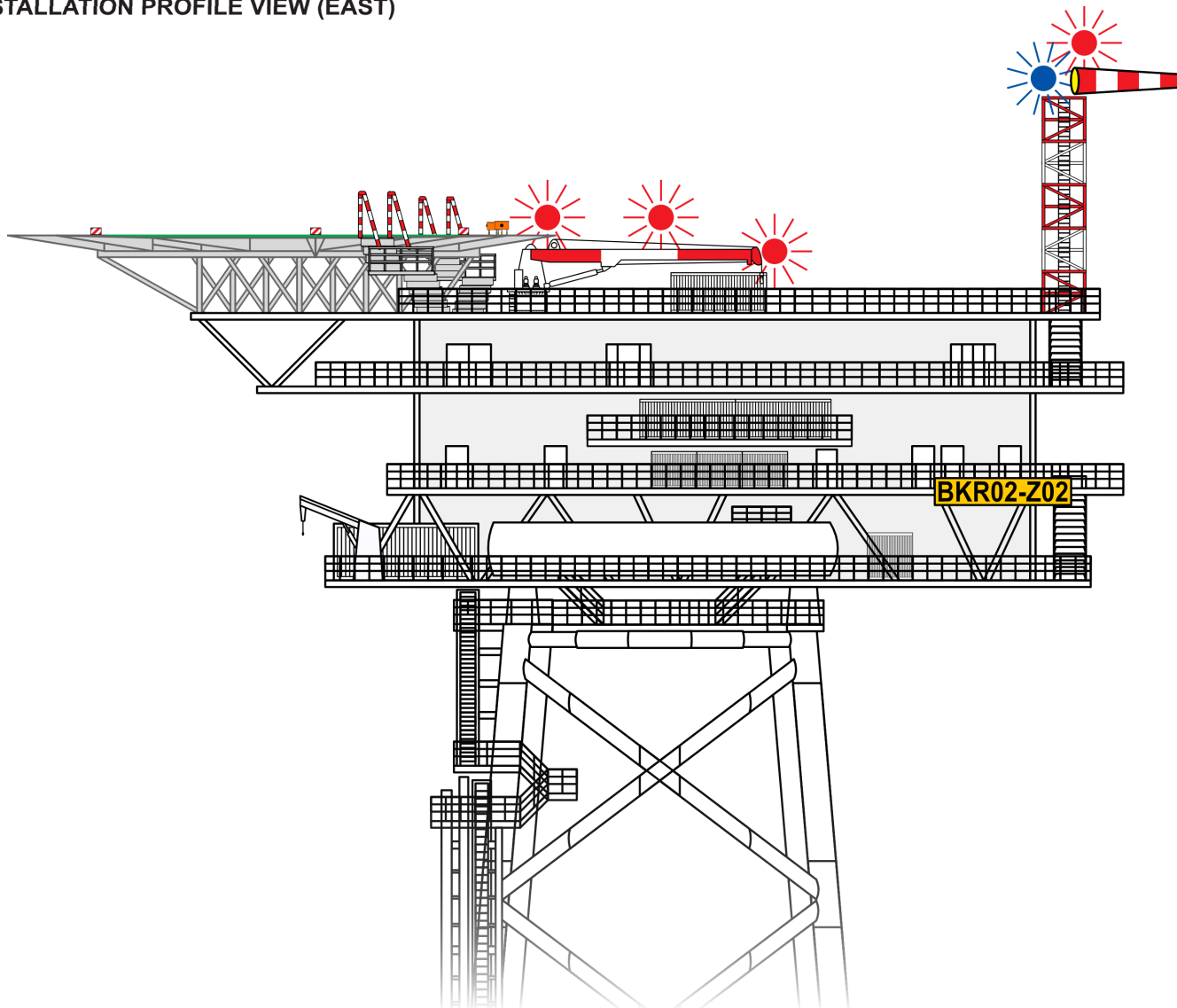
HLD REFERENCE POINT

N 53° 57.42'

E 006° 28.45'

<b>BREMEN INFORMATION</b> 128.525 MHz	<b>AMSTERDAM INFORMATION</b> 119.175 MHz	<b>ØRSTED OPERATIONS</b> 131.905 MHz	
<b>WEATHER INFORMATION</b> 129.115 MHz 7x		<b>LIGHTING &amp; DIMMING</b> 129.115 MHz 3x 100%      4x 30% (10%)      5x 10% (3%)	
<b>HELIDECK HEIGHT</b> 143 ft MSL	<b>D-VALUE</b> 22.25 m	<b>MTOW</b> 13 t	
<b>APPROACH / DEPARTURE CORRIDOR</b>			
SOUTHWEST: 052° / 232°		EAST: 089° / 269°	
<i>DECK HEADING 178°</i>			
<b>HIGHEST OBSTACLE ON INSTALLATION</b> 40 ft ABOVE HLD (ANTENNA MAST)		<b>HIGHEST OBSTACLE IN THE VICINITY</b> 646 ft MSL (WTG)	
<b>REFUELLING FACILITY</b> N/A	<b>GROUND POWER UNIT</b> YES	<b>LANDING NET</b> N/A	<b>STATUS LIGHT</b> N/A
<b>FIRE FIGHTING FACILITIES</b>			
<b>DIFFS</b> AUTO + MAN + REMOTE ACTIVATION	<b>2x HYDRANT</b> SEMI-RIGID HOSES (25 m)	<b>2x 20 kg CO<sub>2</sub></b>	<b>2x 25 kg DRY POWDER</b>

**INSTALLATION PROFILE VIEW (EAST)**



# BORKUM RIFFGRUND 2

HLD IDENTIFICATION  
**BKR02-Z02**

ICAO IDENTIFIER  
**N/A**

OSS SIDE IDENTIFICATION  
**BKR02-Z02**

FIXED NORMALLY UNATTENDED INSTALLATION  
BORKUM RIFFGRUND 2 OFFSHORE WIND FARM GMBH & CO.OHG

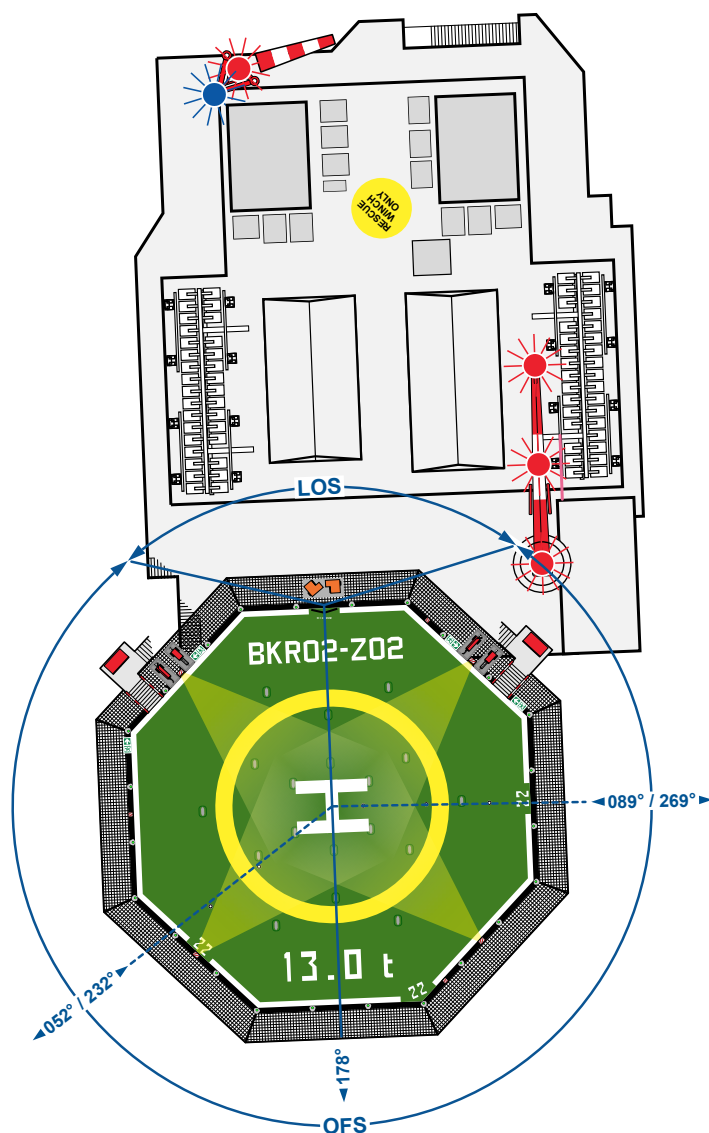
HLD REFERENCE POINT

N 53° 57.42'

E 006° 28.45'

<b>BREMEN INFORMATION</b> 128.525 MHz		<b>AMSTERDAM INFORMATION</b> 119.175 MHz		<b>ØRSTED OPERATIONS</b> 131.905 MHz	
<b>WEATHER INFORMATION</b> 129.115 MHz 7x			<b>LIGHTING &amp; DIMMING</b> 129.115 MHz 3x 100%      4x 30% (10%)      5x 10% (3%)		
<b>HELIDECK HEIGHT</b> 143 ft MSL		<b>D-VALUE</b> 22.25 m		<b>MTOW</b> 13 t	
<b>APPROACH / DEPARTURE CORRIDOR</b>					
SOUTHWEST: 052° / 232°			EAST: 089° / 269°		
DECK HEADING 178°					
<b>HIGHEST OBSTACLE ON INSTALLATION</b> 40 ft ABOVE HLD (ANTENNA MAST)			<b>HIGHEST OBSTACLE IN THE VICINITY</b> 646 ft MSL (WTG)		
<b>REFUELLING FACILITY</b> N/A	<b>GROUND POWER UNIT</b> YES	<b>LANDING NET</b> N/A	<b>STATUS LIGHT</b> N/A		
<b>FIRE FIGHTING FACILITIES</b>					
<b>DIFFS</b> AUTO + MAN + REMOTE ACTIVATION	<b>2x HYDRANT</b> SEMI-RIGID HOSES (25 m)	<b>2x 20 kg CO<sub>2</sub></b>		<b>2x 25 kg DRY POWDER</b>	

**INSTALLATION TOP VIEW**



# BORKUM RIFFGRUND 2

## DEPARTURE BR2 EE

HLD IDENTIFICATION  
**BKR02-Z02**

ICAO IDENTIFIER  
**N/A**

OSS SIDE IDENTIFICATION  
**BKR02-Z02**

**EXIT POINT BR2EE**

**N 53° 57.46'**

**E 006° 31.92'**

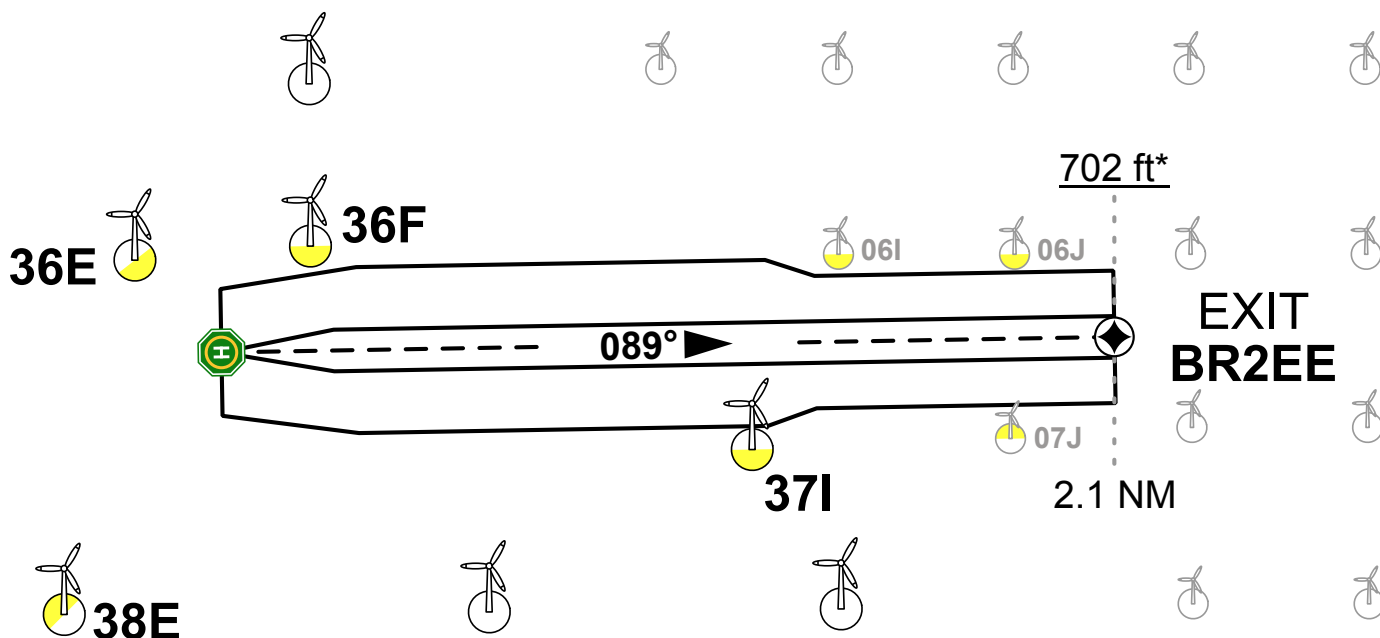
**DEPARTURE DIRECTION**

**089°**

**DEPARTURE PROCEDURE**

- DEPART ON TRACK 089°
- OBSTACLE-FREE WHEN WITHIN DEPARTURE CORRIDOR
- ABOVE WTG HEIGHT WHEN PASSING 646 ft MSL (BKR02) AND 502 ft MSL (BKR01) RESPECTIVELY
- BE AWARE CORRIDOR PROCEEDS PARTIALLY THROUGH OWF BORKUM RIFFGRUND 1
- CORRIDOR DESIGNED TO REACH 200 ft ABOVE WTG HEIGHT AT EXIT POINT BR2EE (4.5% CLIMB RATE)

**DEPARTURE TOP VIEW**



\*200 ft above WTG OWF BKR01

# BORKUM RIFFGRUND 2

## DEPARTURE BR2 EW

HLD IDENTIFICATION  
**BKR02-Z02**

ICAO IDENTIFIER  
**N/A**

OSS SIDE IDENTIFICATION  
**BKR02-Z02**

**EXIT POINT BR2EW**

**N 53° 55.84'**

**E 006° 25.01'**

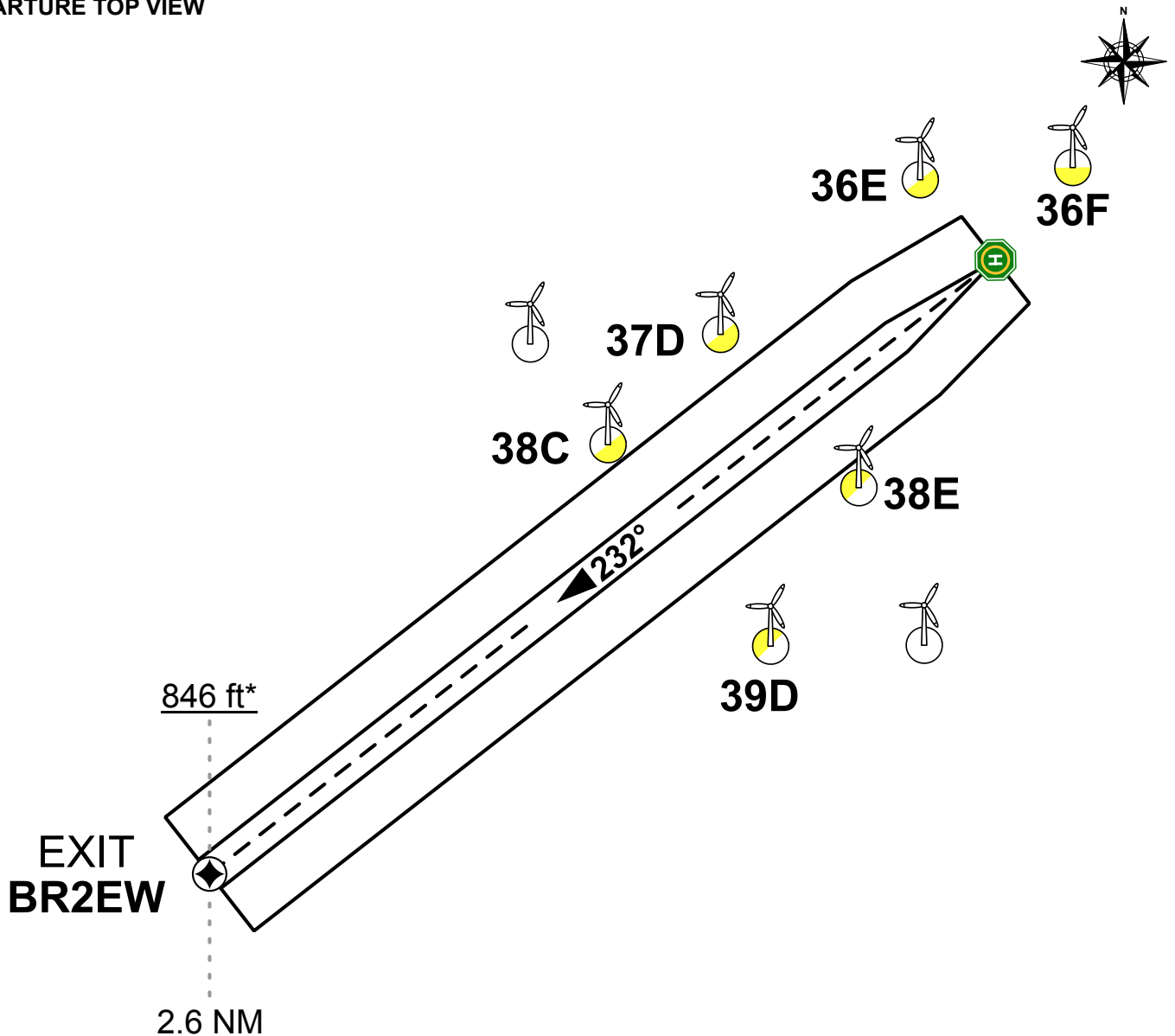
**DEPARTURE DIRECTION**

**232°**

**DEPARTURE PROCEDURE**

- DEPART ON TRACK 232°
- OBSTACLE-FREE WHEN WITHIN DEPARTURE CORRIDOR
- ABOVE WTG HEIGHT WHEN PASSING 646 ft MSL
- CORRIDOR DESIGNED TO REACH 200 ft ABOVE WTG HEIGHT AT EXIT POINT BR2EW (4.5% CLIMB RATE)

**DEPARTURE TOP VIEW**



\*200 ft above WTG