

# BORKUM RIFFGRUND 2

HLD IDENTIFICATION  
**BKR02-Z02**

ICAO IDENTIFIER  
**EHHZ**

OSS SIDE IDENTIFICATION  
**BKR02-Z02**

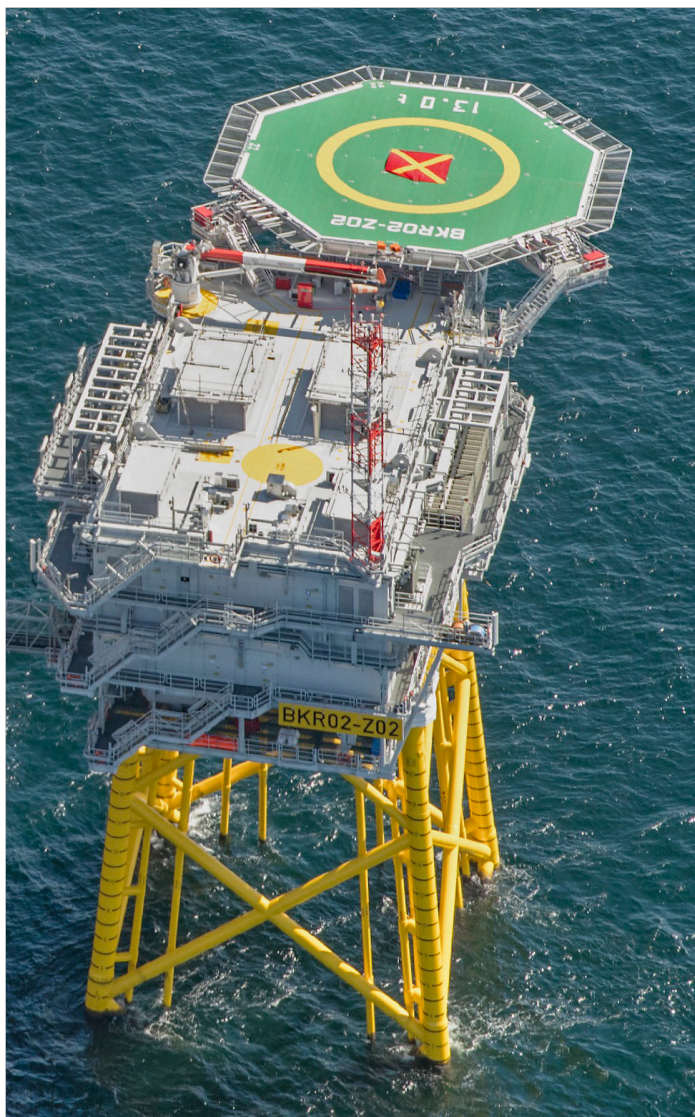
FIXED NORMALLY UNATTENDED INSTALLATION  
BORKUM RIFFGRUND 2 OFFSHORE WIND FARM GMBH & CO.OHG

HLD REFERENCE POINT

N 53° 57.42'

E 006° 28.45'

<b>LANGEN INFORMATION</b> 125.100 MHz			<b>AMSTERDAM INFORMATION</b> 119.175 MHz			<b>ØRSTED OPERATIONS</b> 131.905 MHz		
<b>WEATHER INFORMATION</b> 129.115 MHz 7x				<b>LIGHTING &amp; DIMMING</b> 129.115 MHz 3x 100%      4x 30% (10%)      5x 10% (3%)				
<b>HELIDECK HEIGHT</b> 143 ft MSL			<b>D-VALUE</b> 22.25 m			<b>MTOW</b> 13 t		
<b>APPROACH / DEPARTURE CORRIDOR</b>								
SOUTHWEST: 052° / 232°				EAST: 089° / 269°				
DECK HEADING 178°								
<b>HIGHEST OBSTACLE ON INSTALLATION</b> 40 ft ABOVE HLD (ANTENNA MAST)				<b>HIGHEST OBSTACLE IN THE VICINITY</b> 646 ft MSL (WTG)				
<b>REFUELLING FACILITY</b> N/A		<b>GROUND POWER UNIT</b> YES		<b>LANDING NET</b> N/A		<b>STATUS LIGHT</b> N/A		
<b>FIRE FIGHTING FACILITIES</b>								
<b>DIFFS</b> AUTO + MAN + REMOTE ACTIVATION		<b>2x HYDRANT</b> SEMI-RIGID HOSES (25 m)		<b>2x 20 kg CO<sub>2</sub></b>		<b>2x 25 kg DRY POWDER</b>		



# BORKUM RIFFGRUND 2

HLD IDENTIFICATION  
**BKR02-Z02**

ICAO IDENTIFIER  
**EHHZ**

OSS SIDE IDENTIFICATION  
**BKR02-Z02**

FIXED NORMALLY UNATTENDED INSTALLATION  
BORKUM RIFFGRUND 2 OFFSHORE WIND FARM GMBH & CO.OHG

HLD REFERENCE POINT

N 53° 57.42'

E 006° 28.45'

LANGEN INFORMATION 125.100 MHz			AMSTERDAM INFORMATION 119.175 MHz			ØRSTED OPERATIONS 131.905 MHz		
WEATHER INFORMATION 129.115 MHz 7x				LIGHTING & DIMMING 129.115 MHz 3x 100%      4x 30% (10%)      5x 10% (3%)				
HELIDECK HEIGHT 143 ft MSL			D-VALUE 22.25 m			MTOW 13 t		
APPROACH / DEPARTURE CORRIDOR SOUTHWEST: 052° / 232°      EAST: 089° / 269° DECK HEADING 178°								
HIGHEST OBSTACLE ON INSTALLATION 40 ft ABOVE HLD (ANTENNA MAST)				HIGHEST OBSTACLE IN THE VICINITY 646 ft MSL (WTG)				
REFUELLING FACILITY N/A		GROUND POWER UNIT YES		LANDING NET N/A		STATUS LIGHT N/A		
FIRE FIGHTING FACILITIES DIFFS      2x HYDRANT      2x 20 kg CO <sub>2</sub> 2x 25 kg DRY POWDER AUTO + MAN + REMOTE ACTIVATION      SEMI-RIGID HOSES (25 m)								
NON - COMPLIANCES • NIL				LIMITATIONS • TEMPORARILY VFR DAY ONLY				
REMARKS • CONTACT ØRSTED OPERATIONS / HLO PRIOR TO ENTERING OWF AND FOR FURTHER CLEARANCES • BE AWARE OF WTG IN CLOSE PROXIMITY TO HELIDECK • ORIENTATION OF HELIDECK IDENTIFICATION MARKING NOT ALIGNED WITH PREFERRED APPROACH / DEPARTURE DIRECTIONS (~2°)								

# BORKUM RIFFGRUND 2

HLD IDENTIFICATION  
**BKR02-Z02**

ICAO IDENTIFIER  
**EHHZ**

OSS SIDE IDENTIFICATION  
**BKR02-Z02**

FIXED NORMALLY UNATTENDED INSTALLATION  
BORKUM RIFFGRUND 2 OFFSHORE WIND FARM GMBH & CO.OHG

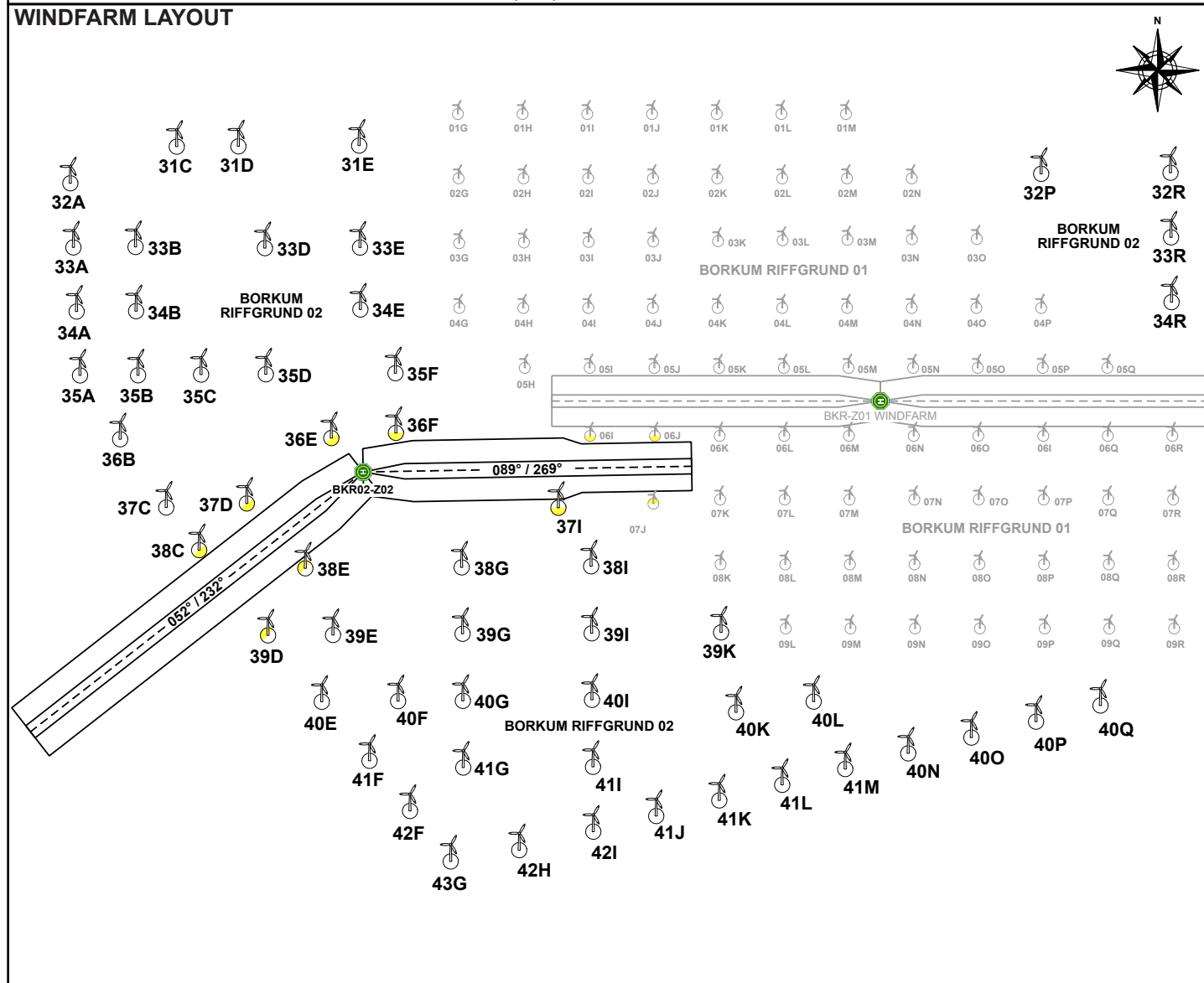
HLD REFERENCE POINT

N 53° 57.42'

E 006° 28.45'

<b>LANGEN INFORMATION</b> 125.100 MHz	<b>AMSTERDAM INFORMATION</b> 119.175 MHz	<b>ØRSTED OPERATIONS</b> 131.905 MHz
<b>WEATHER INFORMATION</b> 129.115 MHz 7x		<b>LIGHTING &amp; DIMMING</b> 129.115 MHz 3x 100%      4x 30% (10%)      5x 10% (3%)
<b>HELIDECK HEIGHT</b> 143 ft MSL	<b>D-VALUE</b> 22.25 m	<b>MTOW</b> 13 t
<b>APPROACH / DEPARTURE CORRIDOR</b>		
SOUTHWEST: 052° / 232°		EAST: 089° / 269°
<i>DECK HEADING 178°</i>		
<b>HIGHEST OBSTACLE ON INSTALLATION</b> 40 ft ABOVE HLD (ANTENNA MAST)		<b>HIGHEST OBSTACLE IN THE VICINITY</b> 646 ft MSL (WTG)
<b>REFUELLING FACILITY</b> N/A	<b>GROUND POWER UNIT</b> YES	<b>LANDING NET</b> N/A
<b>STATUS LIGHT</b> N/A		

FIRE FIGHTING FACILITIES			
<b>DIFFS</b> AUTO + MAN + REMOTE ACTIVATION	<b>2x HYDRANT</b> SEMI-RIGID HOSES (25 m)	<b>2x 20 kg CO<sub>2</sub></b>	<b>2x 25 kg DRY POWDER</b>



# BORKUM RIFFGRUND 2

HLD IDENTIFICATION  
**BKR02-Z02**

ICAO IDENTIFIER  
**EHHZ**

OSS SIDE IDENTIFICATION  
**BKR02-Z02**

FIXED NORMALLY UNATTENDED INSTALLATION  
BORKUM RIFFGRUND 2 OFFSHORE WIND FARM GMBH & CO.OHG

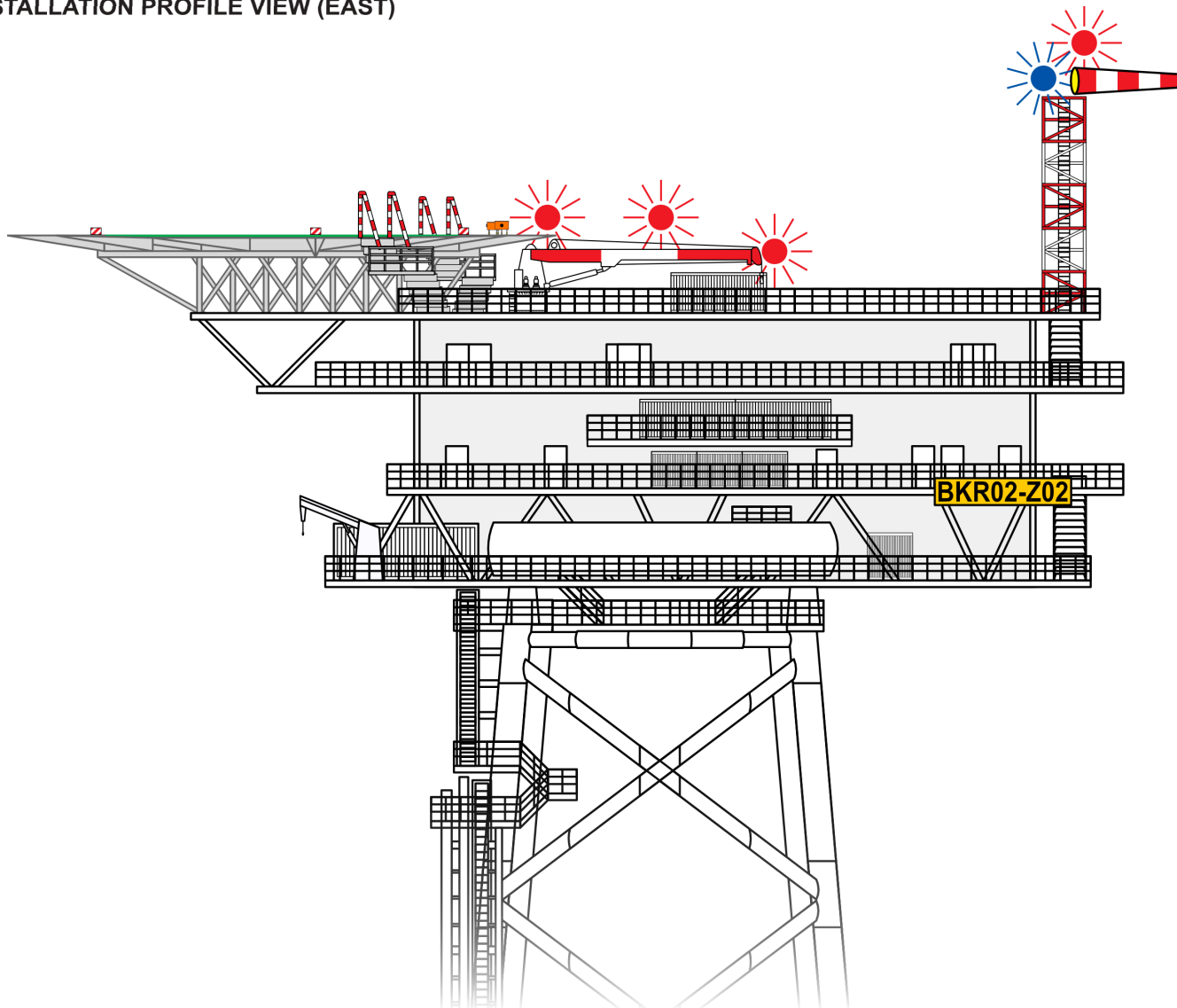
HLD REFERENCE POINT

N 53° 57.42'

E 006° 28.45'

<b>LANGEN INFORMATION</b> 125.100 MHz	<b>AMSTERDAM INFORMATION</b> 119.175 MHz	<b>ØRSTED OPERATIONS</b> 131.905 MHz	
<b>WEATHER INFORMATION</b> 129.115 MHz 7x		<b>LIGHTING &amp; DIMMING</b> 129.115 MHz 3x 100%      4x 30% (10%)      5x 10% (3%)	
<b>HELIDECK HEIGHT</b> 143 ft MSL	<b>D-VALUE</b> 22.25 m	<b>MTOW</b> 13 t	
<b>APPROACH / DEPARTURE CORRIDOR</b>			
SOUTHWEST: 052° / 232°		EAST: 089° / 269°	
<i>DECK HEADING 178°</i>			
<b>HIGHEST OBSTACLE ON INSTALLATION</b> 40 ft ABOVE HLD (ANTENNA MAST)		<b>HIGHEST OBSTACLE IN THE VICINITY</b> 646 ft MSL (WTG)	
<b>REFUELLING FACILITY</b> N/A	<b>GROUND POWER UNIT</b> YES	<b>LANDING NET</b> N/A	<b>STATUS LIGHT</b> N/A
<b>FIRE FIGHTING FACILITIES</b>			
<b>DIFFS</b> AUTO + MAN + REMOTE ACTIVATION	<b>2x HYDRANT</b> SEMI-RIGID HOSES (25 m)	<b>2x 20 kg CO<sub>2</sub></b>	<b>2x 25 kg DRY POWDER</b>

**INSTALLATION PROFILE VIEW (EAST)**



# BORKUM RIFFGRUND 2

HLD IDENTIFICATION  
**BKR02-Z02**

ICAO IDENTIFIER  
**EHHZ**

OSS SIDE IDENTIFICATION  
**BKR02-Z02**

FIXED NORMALLY UNATTENDED INSTALLATION  
BORKUM RIFFGRUND 2 OFFSHORE WIND FARM GMBH & CO.OHG

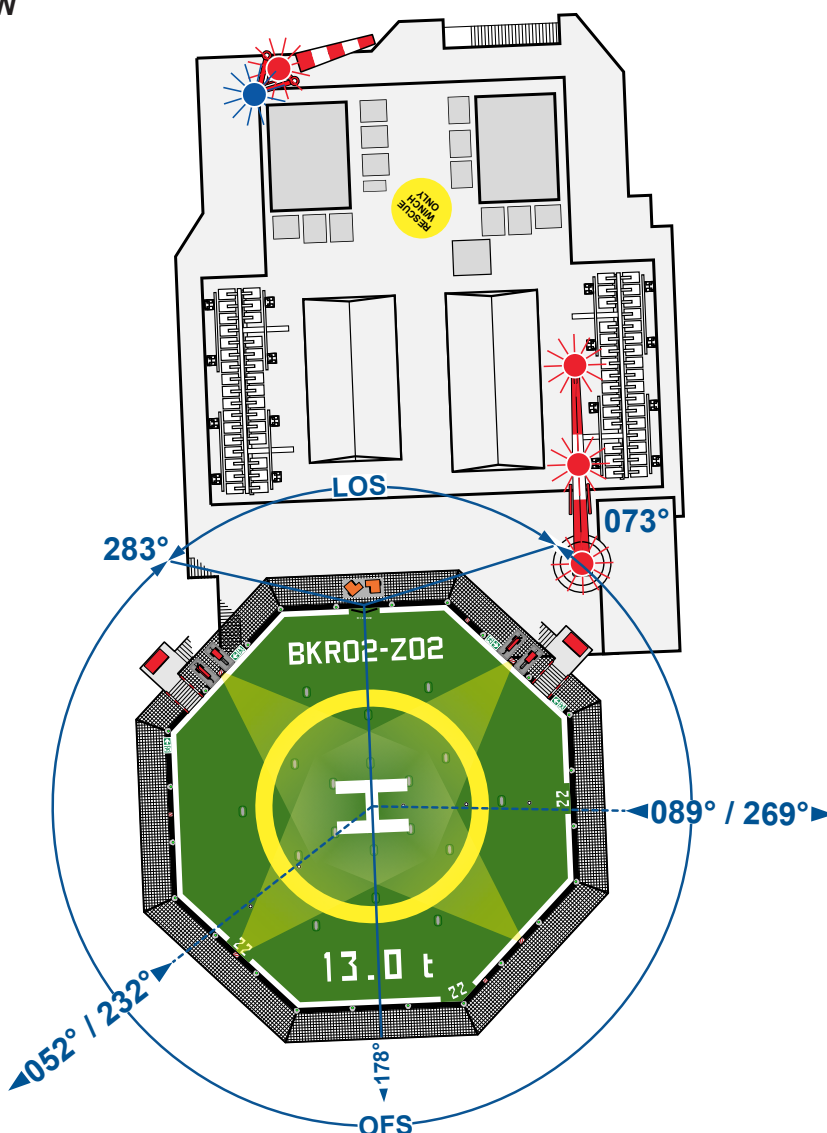
HLD REFERENCE POINT

N 53° 57.42'

E 006° 28.45'

<b>LANGEN INFORMATION</b> 125.100 MHz		<b>AMSTERDAM INFORMATION</b> 119.175 MHz		<b>ØRSTED OPERATIONS</b> 131.905 MHz	
<b>WEATHER INFORMATION</b> 129.115 MHz 7x			<b>LIGHTING &amp; DIMMING</b> 129.115 MHz 3x 100%      4x 30% (10%)      5x 10% (3%)		
<b>HELIDECK HEIGHT</b> 143 ft MSL		<b>D-VALUE</b> 22.25 m		<b>MTOW</b> 13 t	
<b>APPROACH / DEPARTURE CORRIDOR</b>					
SOUTHWEST: 052° / 232°			EAST: 089° / 269°		
<i>DECK HEADING 178°</i>					
<b>HIGHEST OBSTACLE ON INSTALLATION</b> 40 ft ABOVE HLD (ANTENNA MAST)			<b>HIGHEST OBSTACLE IN THE VICINITY</b> 646 ft MSL (WTG)		
<b>REFUELLING FACILITY</b> N/A	<b>GROUND POWER UNIT</b> YES		<b>LANDING NET</b> N/A	<b>STATUS LIGHT</b> N/A	
<b>FIRE FIGHTING FACILITIES</b>					
<b>DIFFS</b> AUTO + MAN + REMOTE ACTIVATION	<b>2x HYDRANT</b> SEMI-RIGID HOSES (25 m)		<b>2x 20 kg CO<sub>2</sub></b>		<b>2x 25 kg DRY POWDER</b>

**INSTALLATION TOP VIEW**



# BORKUM RIFFGRUND 2

## DEPARTURE BR2 EE

HLD IDENTIFICATION  
**BKR02-Z02**

ICAO IDENTIFIER  
**EHHZ**

OSS SIDE IDENTIFICATION  
**BKR02-Z02**

EXIT POINT BR2EE

N 53° 57.46'

E 006° 31.92'

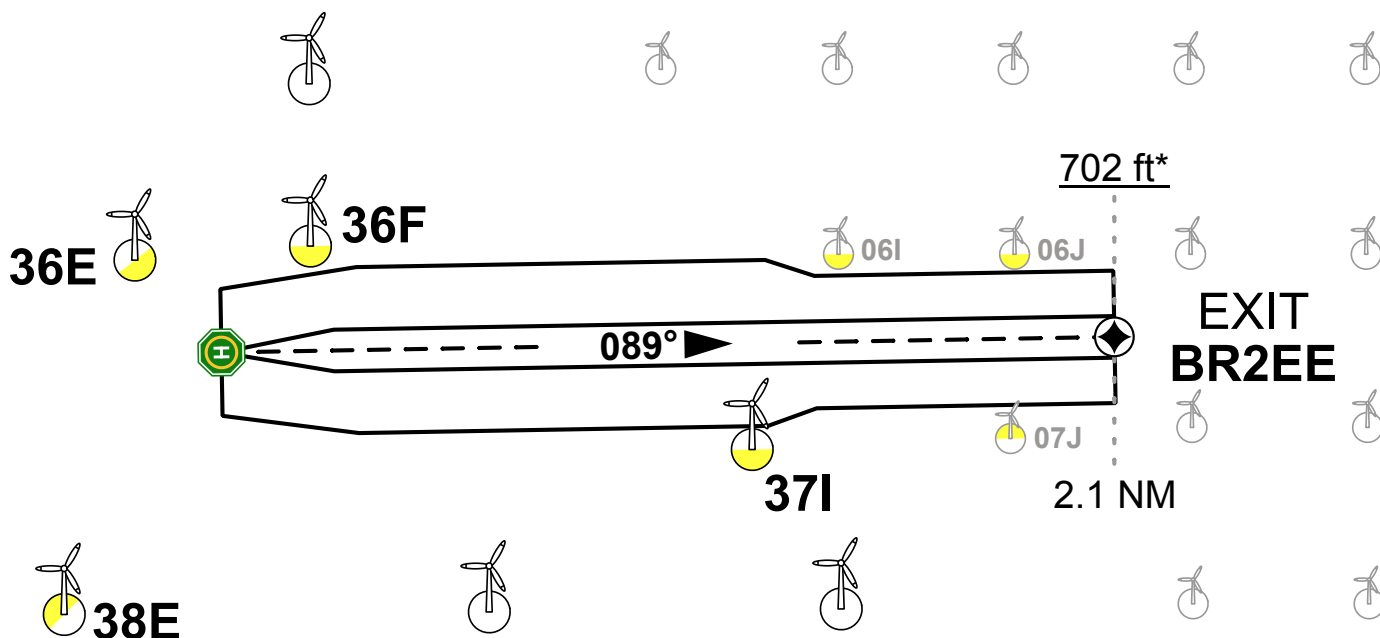
DEPARTURE DIRECTION

089°

**DEPARTURE PROCEDURE**

- DEPART ON TRACK 089°
- OBSTACLE-FREE WHEN WITHIN DEPARTURE CORRIDOR
- ABOVE WTG HEIGHT WHEN PASSING 646 ft MSL (BKR02) AND 502 ft MSL (BKR01) RESPECTIVELY
- BE AWARE CORRIDOR PROCEEDS PARTIALLY THROUGH OWF BORKUM RIFFGRUND 1
- CORRIDOR DESIGNED TO REACH 200 ft ABOVE WTG HEIGHT AT EXIT POINT BR2EE (4.5% CLIMB RATE)

**DEPARTURE TOP VIEW**



\*200 ft above WTG OWF BKR01

# BORKUM RIFFGRUND 2

## DEPARTURE BR2 EW

HLD IDENTIFICATION  
**BKR02-Z02**

ICAO IDENTIFIER  
**EHHZ**

OSS SIDE IDENTIFICATION  
**BKR02-Z02**

EXIT POINT BR2EW

N 53° 55.84'

E 006° 25.01'

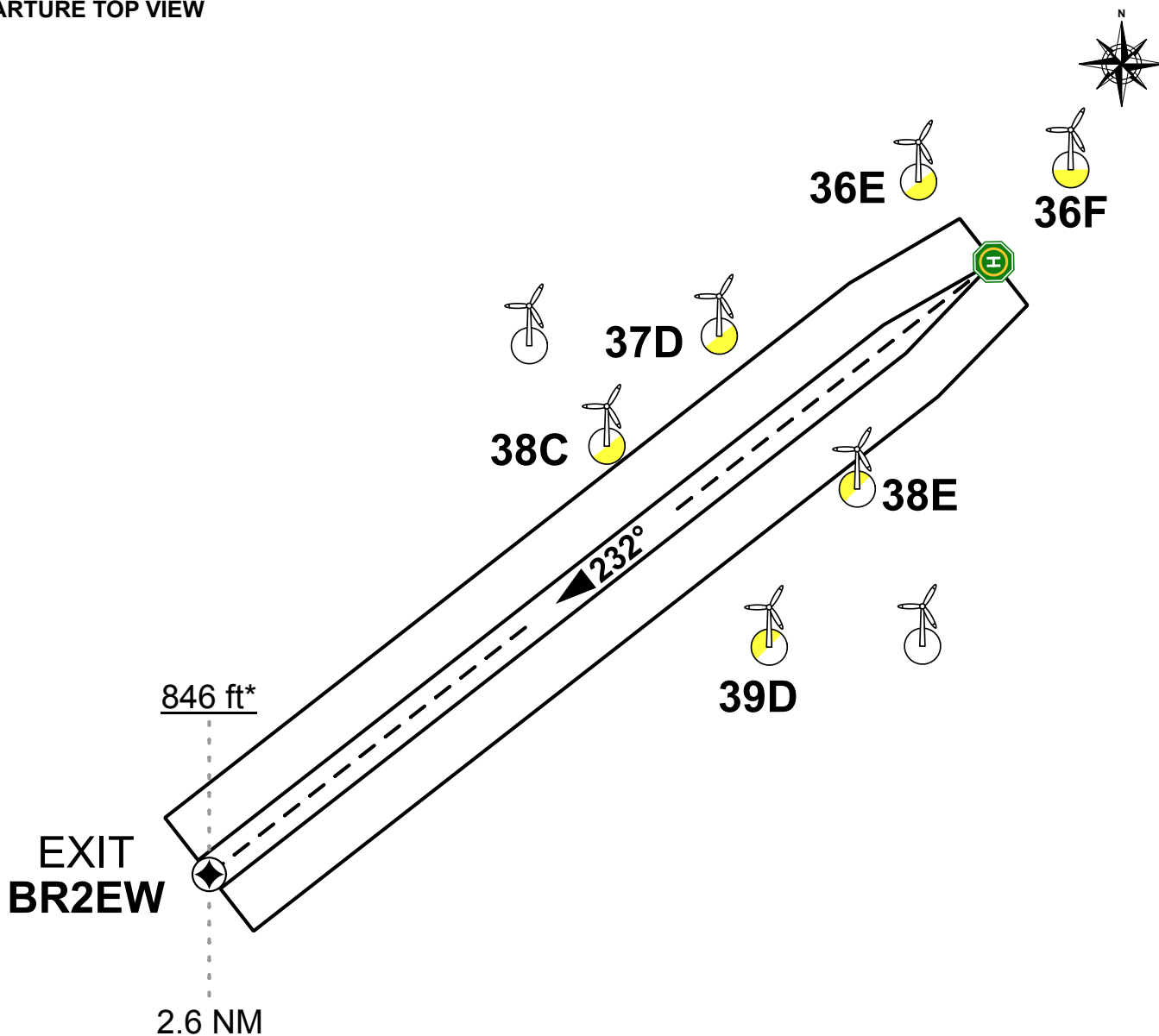
DEPARTURE DIRECTION

232°

**DEPARTURE PROCEDURE**

- DEPART ON TRACK 232°
- OBSTACLE-FREE WHEN WITHIN DEPARTURE CORRIDOR
- ABOVE WTG HEIGHT WHEN PASSING 646 ft MSL
- CORRIDOR DESIGNED TO REACH 200 ft ABOVE WTG HEIGHT AT EXIT POINT BR2EW (4.5% CLIMB RATE)

**DEPARTURE TOP VIEW**



\*200 ft above WTG