

# GODE WIND 01

HLD IDENTIFICATION  
**GOW01-Z01**

ICAO IDENTIFIER  
**EDYG**

OSS SIDE IDENTIFICATION  
**GOW01-Z01**

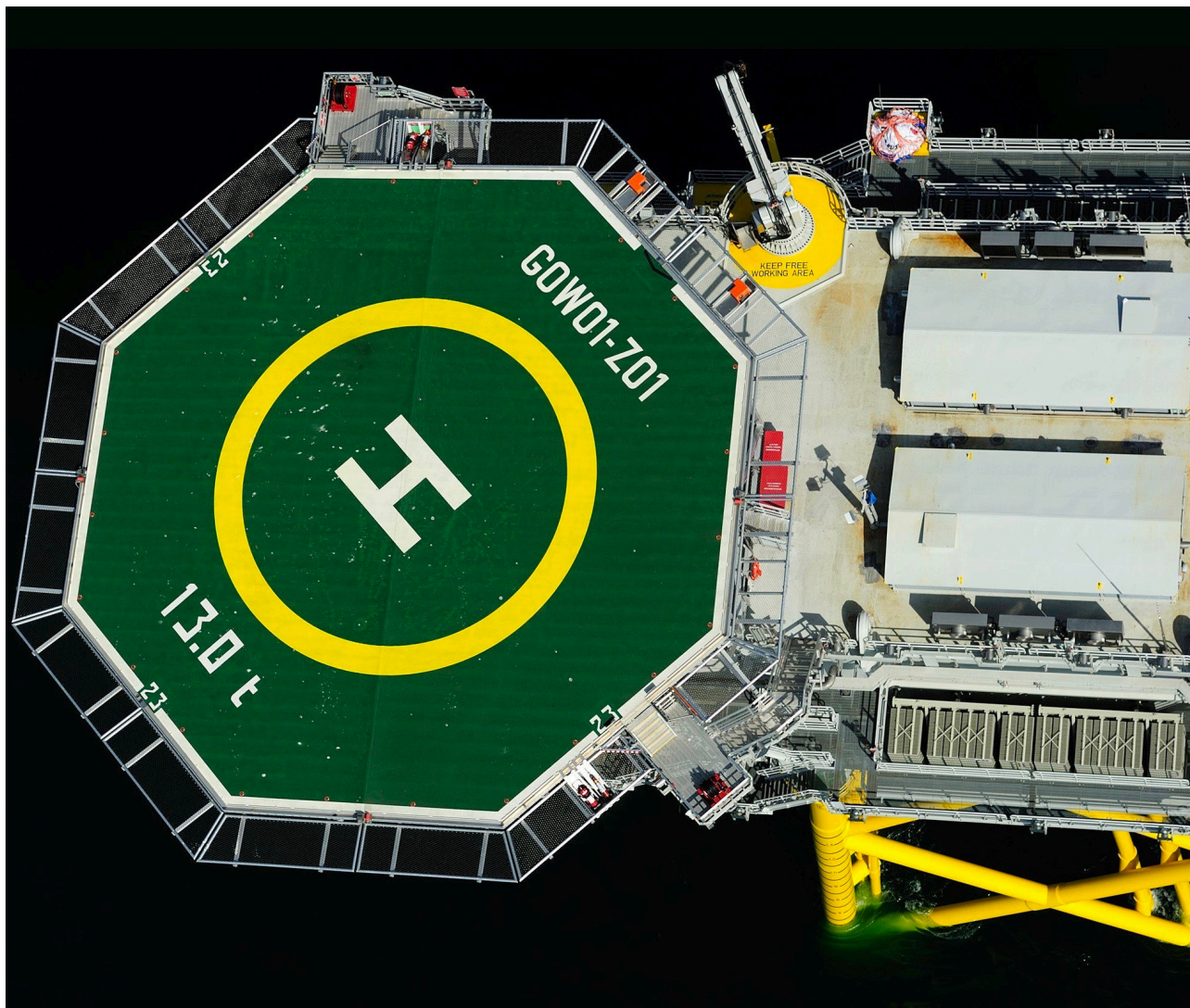
FIXED NORMALLY UNATTENDED INSTALLATION  
GODE WIND 01 OFFSHORE WIND FARM GMBH & CO.OHG

HLD REFERENCE POINT

N 54° 01.54'

E 007° 00.53'

<b>LANGEN INFORMATION</b> 125.100 MHz		<b>ØRSTED OPERATIONS</b> 131.905 MHz	
<b>WEATHER INFORMATION</b> 131.865 MHz 7x		<b>LIGHTING &amp; DIMMING</b> 131.865 MHz 3x 100%      4x 30% (10%)      5x 10% (3%)	
<b>HELIDECK HEIGHT</b> 141 ft MSL	<b>D-VALUE</b> 23 m	<b>MTOW</b> 13.0 t	
<b>APPROACH / DEPARTURE CORRIDOR</b>			
046° / 226° (SW)		043° / 223° (NE)	
<i>DECK HEADING 313°</i>			
<b>HIGHEST OBSTACLE ON INSTALLATION</b> 39 ft ABOVE HLD (ANTENNA MAST)		<b>HIGHEST OBSTACLE IN THE VICINITY</b> 617 ft MSL (WTG)	
<b>REFUELLING FACILITY</b> N/A	<b>GROUND POWER UNIT</b> YES	<b>LANDING NET</b> N/A	<b>STATUS LIGHT</b> N/A
<b>FIRE FIGHTING FACILITIES</b>			
<b>DIFFS</b> AUTO + MAN + REMOTE ACTIVATION	<b>2x HYDRANT</b> SEMI-RIGID HOSES (30 m)	<b>2x 10 kg CO<sub>2</sub></b>	<b>2x 25 kg DRY POWDER</b>



# GODE WIND 01

HLD IDENTIFICATION  
**GOW01-Z01**

ICAO IDENTIFIER  
**EDYG**

OSS SIDE IDENTIFICATION  
**GOW01-Z01**

FIXED NORMALLY UNATTENDED INSTALLATION  
GODE WIND 01 OFFSHORE WIND FARM GMBH & CO.OHG

HLD REFERENCE POINT

N 54° 01.54'

E 007° 00.53'

<b>LANGEN INFORMATION</b> 125.100 MHz		<b>ØRSTED OPERATIONS</b> 131.905 MHz	
<b>WEATHER INFORMATION</b> 131.865 MHz 7x		<b>LIGHTING &amp; DIMMING</b> 131.865 MHz 3x 100%      4x 30% (10%)      5x 10% (3%)	
<b>HELIDECK HEIGHT</b> 141 ft MSL	<b>D-VALUE</b> 23 m	<b>MTOW</b> 13.0 t	
<b>APPROACH / DEPARTURE CORRIDOR</b>			
046° / 226° (SW)		043° / 223° (NE)	
<i>DECK HEADING 313°</i>			
<b>HIGHEST OBSTACLE ON INSTALLATION</b> 39 ft ABOVE HLD (ANTENNA MAST)		<b>HIGHEST OBSTACLE IN THE VICINITY</b> 617 ft MSL (WTG)	
<b>REFUELLING FACILITY</b> N/A	<b>GROUND POWER UNIT</b> YES	<b>LANDING NET</b> N/A	<b>STATUS LIGHT</b> N/A
<b>FIRE FIGHTING FACILITIES</b>			
<b>DIFFS</b> AUTO + MAN + REMOTE ACTIVATION	<b>2x HYDRANT</b> SEMI-RIGID HOSES (30 m)	<b>2x 10 kg CO<sub>2</sub></b>	<b>2x 25 kg DRY POWDER</b>
<b>NON - COMPLIANCES</b>  • <b>WESTERLY LIGHTNING ROD INFRINGES 210°- OBSTACLE-FREE SECTOR</b> (DISTANCE 14 METRES FROM AND 1.5 METRES ABOVE HLD)		<b>LIMITATIONS</b>  • <b>NIL</b>	
<b>REMARKS</b>  • <b>CONTACT ØRSTED OPERATIONS / HLO PRIOR TO ENTERING OWF AND FOR FURTHER CLEARANCES</b> • <b>SOUTHWESTERLY APPROACH LIGHTS NOT ALIGNED WITH PREFERRED FINAL APPROACH DIRECTION (DIVERGENCE ~3°)</b> • <b>BE AWARE OF WTG IN CLOSE PROXIMITY TO HELIDECK</b>			

# GODE WIND 01

HLD IDENTIFICATION  
**GOW01-Z01**

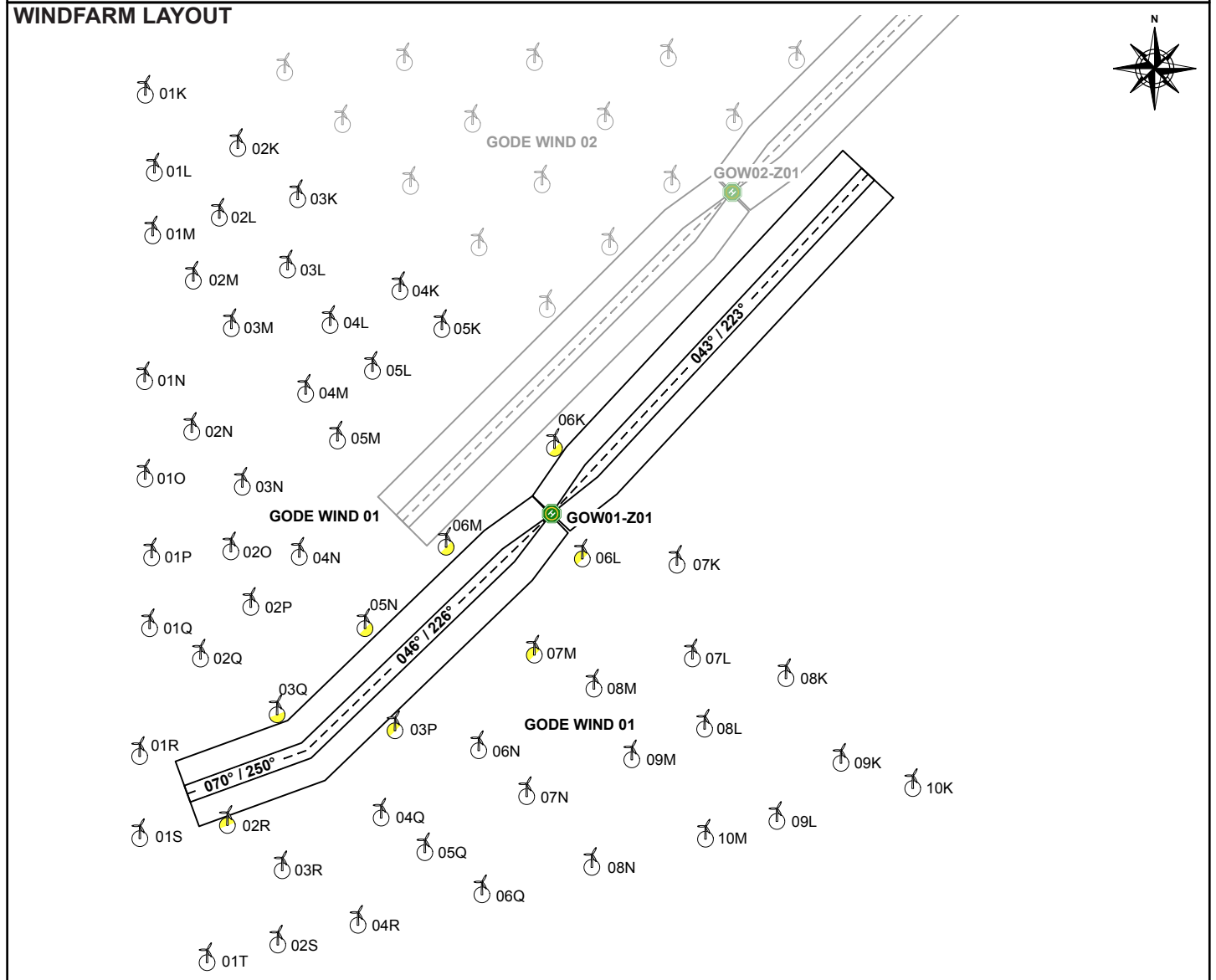
ICAO IDENTIFIER  
**EDYG**

OSS SIDE IDENTIFICATION  
**GOW01-Z01**

**FIXED NORMALLY UNATTENDED INSTALLATION**  
**GODE WIND 01 OFFSHORE WIND FARM GMBH & CO.OHG**

HLD REFERENCE POINT			
<b>N 54° 01.54'</b>		<b>E 007° 00.53'</b>	
<b>LANGEN INFORMATION</b> 125.100 MHz		<b>ØRSTED OPERATIONS</b> 131.905 MHz	
<b>WEATHER INFORMATION</b> 131.865 MHz 7x		<b>LIGHTING &amp; DIMMING</b> 131.865 MHz 3x 100%    4x 30% (10%)    5x 10% (3%)	
<b>HELIDECK HEIGHT</b> 141 ft MSL	<b>D-VALUE</b> 23 m		<b>MTOW</b> 13.0 t
<b>APPROACH / DEPARTURE CORRIDOR</b>			
<b>046° / 226° (SW)</b>		<b>043° / 223° (NE)</b>	
<i>DECK HEADING 313°</i>			
<b>HIGHEST OBSTACLE ON INSTALLATION</b> 39 ft ABOVE HLD (ANTENNA MAST)		<b>HIGHEST OBSTACLE IN THE VICINITY</b> 617 ft MSL (WTG)	
<b>REFUELLING FACILITY</b> N/A	<b>GROUND POWER UNIT</b> YES	<b>LANDING NET</b> N/A	<b>STATUS LIGHT</b> N/A

<b>FIRE FIGHTING FACILITIES</b>			
<b>DIFFS</b> AUTO + MAN + REMOTE ACTIVATION	<b>2x HYDRANT</b> SEMI-RIGID HOSES (30 m)	<b>2x 10 kg CO<sub>2</sub></b>	<b>2x 25 kg DRY POWDER</b>



# GODE WIND 01

HLD IDENTIFICATION  
**GOW01-Z01**

ICAO IDENTIFIER  
**EDYG**

OSS SIDE IDENTIFICATION  
**GOW01-Z01**

**FIXED NORMALLY UNATTENDED INSTALLATION**  
**GODE WIND 01 OFFSHORE WIND FARM GMBH & CO.OHG**

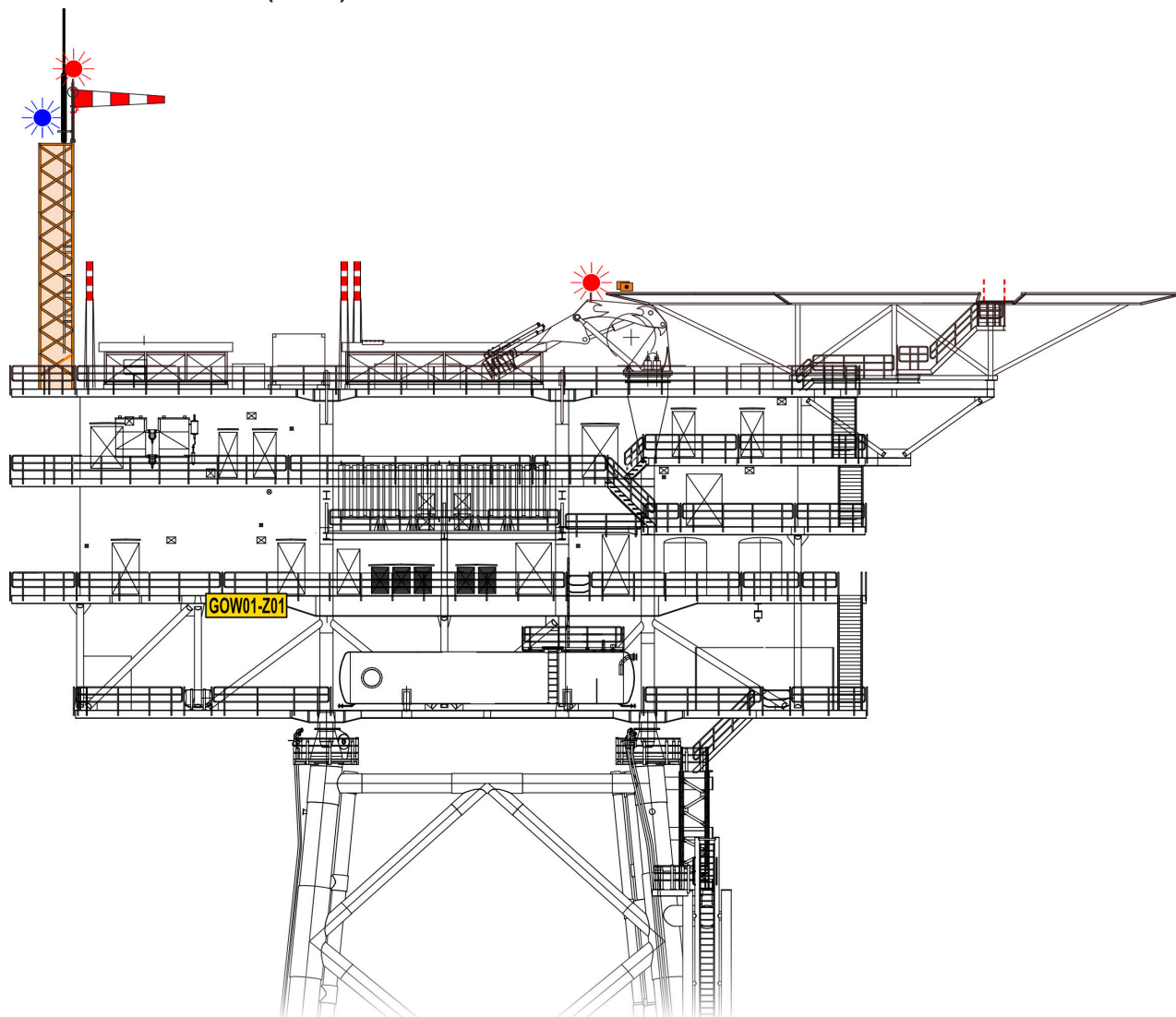
HLD REFERENCE POINT

**N 54° 01.54'**

**E 007° 00.53'**

<b>LANGEN INFORMATION</b> 125.100 MHz		<b>ØRSTED OPERATIONS</b> 131.905 MHz	
<b>WEATHER INFORMATION</b> 131.865 MHz 7x		<b>LIGHTING &amp; DIMMING</b> 131.865 MHz 3x 100%      4x 30% (10%)      5x 10% (3%)	
<b>HELIDECK HEIGHT</b> 141 ft MSL	<b>D-VALUE</b> 23 m	<b>MTOW</b> 13.0 t	
<b>APPROACH / DEPARTURE CORRIDOR</b>			
046° / 226° (SW)		043° / 223° (NE)	
<i>DECK HEADING 313°</i>			
<b>HIGHEST OBSTACLE ON INSTALLATION</b> 39 ft ABOVE HLD (ANTENNA MAST)		<b>HIGHEST OBSTACLE IN THE VICINITY</b> 617 ft MSL (WTG)	
<b>REFUELLING FACILITY</b> N/A	<b>GROUND POWER UNIT</b> YES	<b>LANDING NET</b> N/A	<b>STATUS LIGHT</b> N/A
<b>FIRE FIGHTING FACILITIES</b>			
<b>DIFFS</b> AUTO + MAN + REMOTE ACTIVATION	<b>2x HYDRANT</b> SEMI-RIGID HOSES (30 m)	<b>2x 10 kg CO<sub>2</sub></b>	<b>2x 25 kg DRY POWDER</b>

**INSTALLATION PROFILE VIEW (EAST)**



# GODE WIND 01

HLD IDENTIFICATION  
**GOW01-Z01**

ICAO IDENTIFIER  
**EDYG**

OSS SIDE IDENTIFICATION  
**GOW01-Z01**

FIXED NORMALLY UNATTENDED INSTALLATION  
GODE WIND 01 OFFSHORE WIND FARM GMBH & CO.OHG

HLD REFERENCE POINT

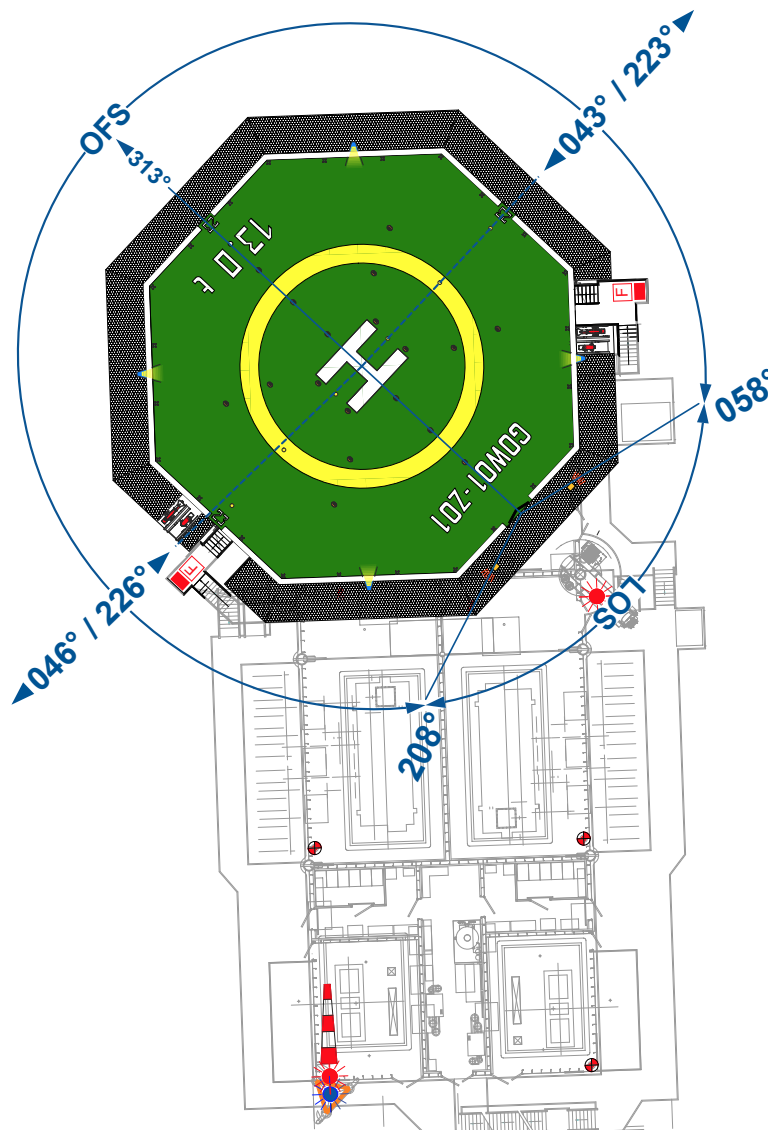
N 54° 01.54'

E 007° 00.53'

<b>LANGEN INFORMATION</b> 125.100 MHz		<b>ØRSTED OPERATIONS</b> 131.905 MHz	
<b>WEATHER INFORMATION</b> 131.865 MHz 7x		<b>LIGHTING &amp; DIMMING</b> 131.865 MHz 3x 100%      4x 30% (10%)      5x 10% (3%)	
<b>HELIDECK HEIGHT</b> 141 ft MSL	<b>D-VALUE</b> 23 m	<b>MTOW</b> 13.0 t	
<b>APPROACH / DEPARTURE CORRIDOR</b>			
046° / 226° (SW)		043° / 223° (NE)	
HIGHEST OBSTACLE ON INSTALLATION 39 ft ABOVE HLD (ANTENNA MAST)		HIGHEST OBSTACLE IN THE VICINITY 617 ft MSL (WTG)	
<b>REFUELLING FACILITY</b> N/A	<b>GROUND POWER UNIT</b> YES	<b>LANDING NET</b> N/A	<b>STATUS LIGHT</b> N/A

FIRE FIGHTING FACILITIES			
<b>DIFFS</b> AUTO + MAN + REMOTE ACTIVATION	<b>2x HYDRANT</b> SEMI-RIGID HOSES (30 m)	<b>2x 10 kg CO<sub>2</sub></b>	<b>2x 25 kg DRY POWDER</b>

**INSTALLATION TOP VIEW**



# GODE WIND 01 DEPARTURE G01 EE

HLD IDENTIFICATION  
**GOW01-Z01**

ICAO IDENTIFIER  
**EDYG**

OSS SIDE IDENTIFICATION  
**GOW01-Z01**

EXIT POINT G01EE

N 54° 03.45'

E 007° 03.64'

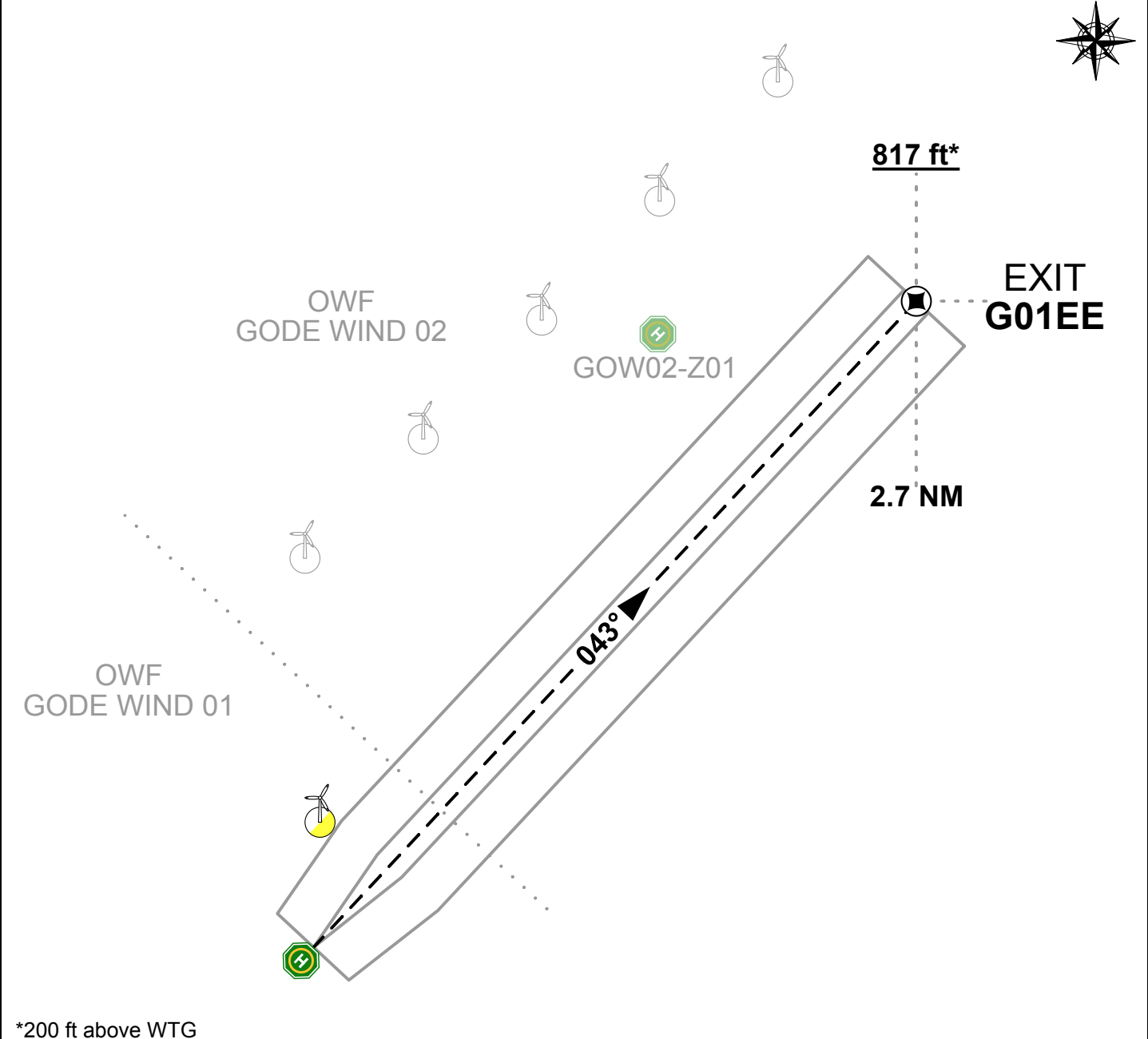
DEPARTURE DIRECTION

043°

**DEPARTURE PROCEDURE**

- DEPART ON TRACK 043°
- OBSTACLE-FREE WHEN WITHIN DEPARTURE CORRIDOR
- ABOVE WTG HEIGHT WHEN PASSING 617 ft MSL
- CORRIDOR DESIGNED TO REACH 200 ft ABOVE WTG HEIGHT AT EXIT POINT G01EE (4.5% CLIMB RATE)

**DEPARTURE TOP VIEW**



\*200 ft above WTG

# GODE WIND 01 DEPARTURE G01 EW

HLD IDENTIFICATION  
**GOW01-Z01**

ICAO IDENTIFIER  
**EDYG**

OSS SIDE IDENTIFICATION  
**GOW01-Z01**

<b>TURNING POINT G01TW</b>		<b>EXIT POINT G01EW</b>	
N 54° 00.14'	E 006° 58.15'	N 53° 59.89'	E 006° 56.98'

**DEPARTURE DIRECTION**  
226°

- DEPARTURE PROCEDURE**
- INITIALLY DEPART ON TRACK 226°
  - AT TURNING POINT G01TW TURN ONTO TRACK 250°
  - OBSTACLE-FREE WHEN WITHIN DEPARTURE CORRIDOR
  - ABOVE WTG HEIGHT WHEN PASSING 617 ft MSL
  - CORRIDOR DESIGNED TO REACH 200 ft ABOVE WTG HEIGHT AT EXIT POINT G01EW (4.5% CLIMB RATE)

