

GODE WIND 02

HLD IDENTIFICATION
GOW02-Z01

ICAO IDENTIFIER
N/A

OSS SIDE IDENTIFICATION
GOW02-Z01

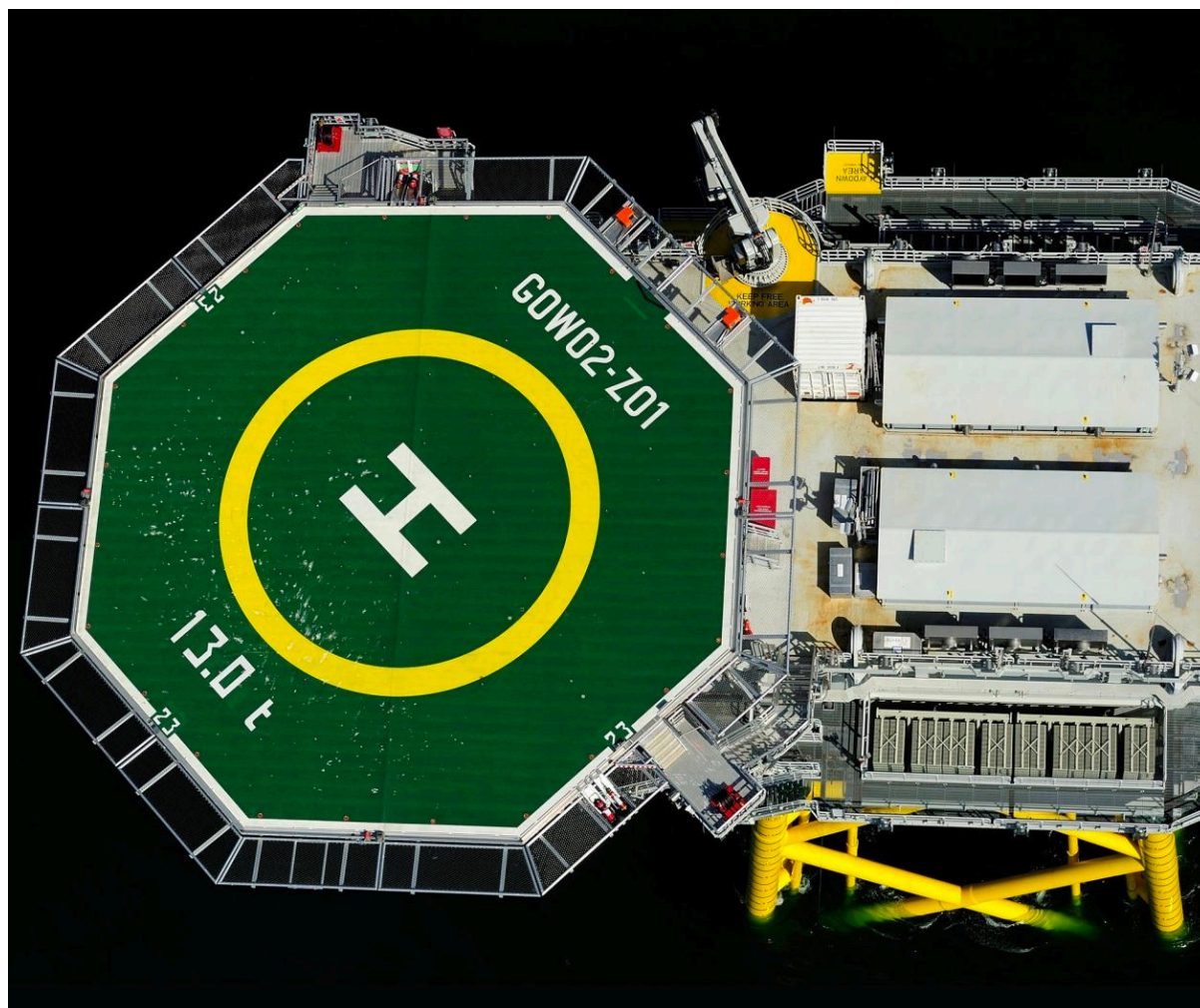
FIXED NORMALLY UNATTENDED INSTALLATION
GODE WIND 02 OFFSHORE WINDFARM P/S GMBH & CO.KG

HLD REFERENCE POINT

N 54° 03.34'

E 007° 02.30'

BREMEN INFORMATION 128.525 MHz		ØRSTED OPERATIONS 131.905 MHz	
WEATHER INFORMATION 131.415 MHz 7x		LIGHTING & DIMMING 131.415 MHz 3x 100% 4x 30% (10%) 5x 10% (3%)	
HELIDECK HEIGHT 134 ft MSL	D-VALUE 23 m	MTOW 13.0 t	
APPROACH / DEPARTURE CORRIDOR 045° / 225° DECK HEADING 315°			
HIGHEST OBSTACLE ON INSTALLATION 37 ft ABOVE HLD (ANTENNA MAST)		HIGHEST OBSTACLE IN THE VICINITY 617 ft MSL (WTG)	
REFUELLING FACILITY N/A	GROUND POWER UNIT YES	LANDING NET N/A	STATUS LIGHT N/A
FIRE FIGHTING FACILITIES			
DIFFS AUTO + MAN + REMOTE ACTIVATION	2x HYDRANT SEMI-RIGID HOSES (30 m)	2x 10 kg CO₂	2x 25 kg DRY POWDER



GODE WIND 02

HLD IDENTIFICATION
GOW02-Z01

ICAO IDENTIFIER
N/A

OSS SIDE IDENTIFICATION
GOW02-Z01

FIXED NORMALLY UNATTENDED INSTALLATION
GODE WIND 02 OFFSHORE WINDFARM P/S GMBH & CO.KG

HLD REFERENCE POINT

N 54° 03.34'

E 007° 02.30'

BREMEN INFORMATION 128.525 MHz		ØRSTED OPERATIONS 131.905 MHz	
WEATHER INFORMATION 131.415 MHz 7x		LIGHTING & DIMMING 131.415 MHz 3x 100% 4x 30% (10%) 5x 10% (3%)	
HELIDECK HEIGHT 134 ft MSL	D-VALUE 23 m	MTOW 13.0 t	
APPROACH / DEPARTURE CORRIDOR 045° / 225° DECK HEADING 315°			
HIGHEST OBSTACLE ON INSTALLATION 37 ft ABOVE HLD (ANTENNA MAST)		HIGHEST OBSTACLE IN THE VICINITY 617 ft MSL (WTG)	
REFUELLING FACILITY N/A	GROUND POWER UNIT YES	LANDING NET N/A	STATUS LIGHT N/A
FIRE FIGHTING FACILITIES			
DIFFS AUTO + MAN + REMOTE ACTIVATION	2x HYDRANT SEMI-RIGID HOSES (30 m)	2x 10 kg CO₂	2x 25 kg DRY POWDER
NON - COMPLIANCES <ul style="list-style-type: none"> • WESTERLY LIGHTNING ROD INFRINGES 210°- OBSTACLE-FREE SECTOR (DISTANCE 14 METRES FROM AND 1.5 METRES ABOVE HLD) 		LIMITATIONS <ul style="list-style-type: none"> • NIL 	
REMARKS <ul style="list-style-type: none"> • CONTACT ØRSTED OPERATIONS / HLO PRIOR TO ENTERING OWF AND FOR FURTHER CLEARANCES • BE AWARE OF WTG IN CLOSE PROXIMITY TO HELIDECK 			

GODE WIND 02

HLD IDENTIFICATION
GOW02-Z01

ICAO IDENTIFIER
N/A

OSS SIDE IDENTIFICATION
GOW02-Z01

FIXED NORMALLY UNATTENDED INSTALLATION
GODE WIND 02 OFFSHORE WINDFARM P/S GMBH & CO.KG

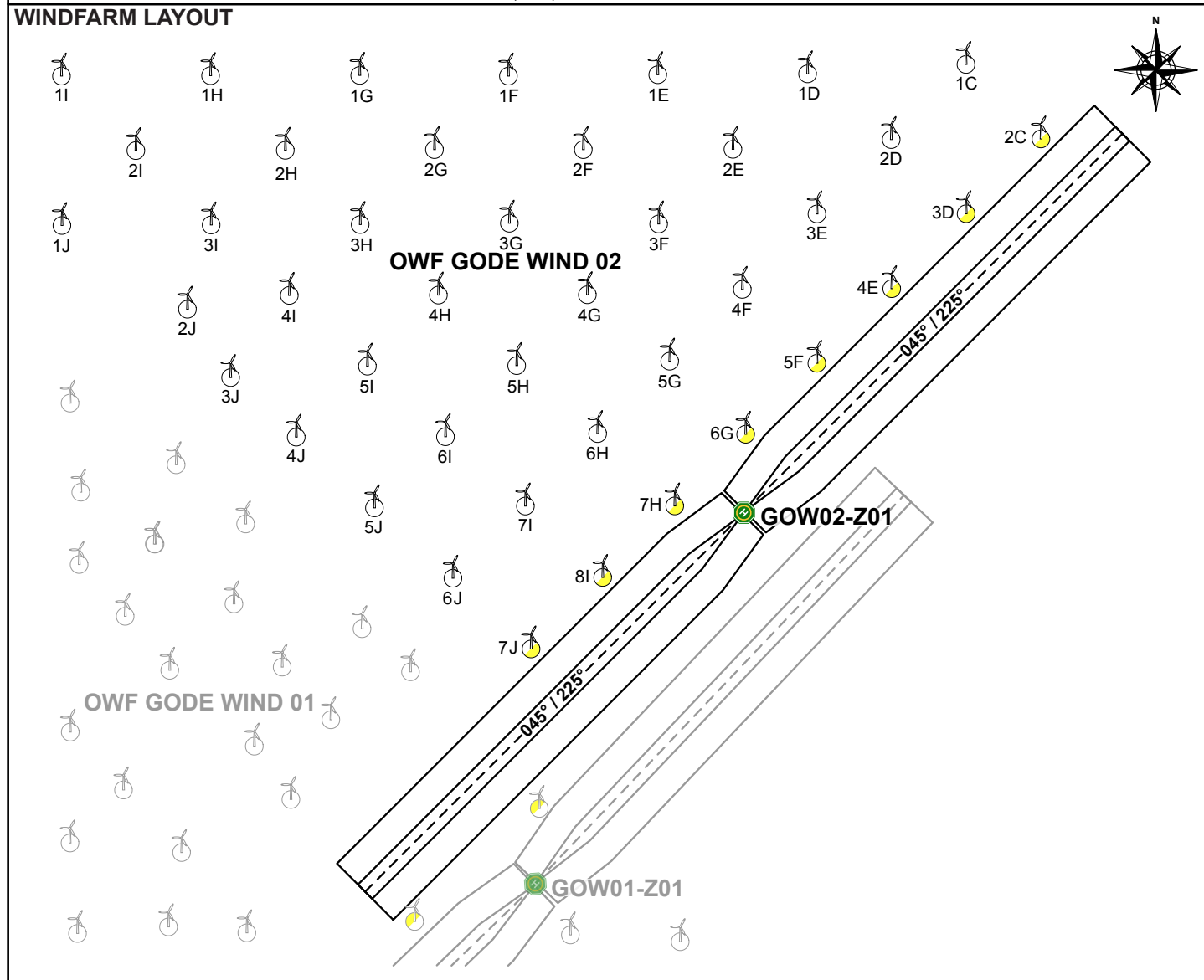
HLD REFERENCE POINT

N 54° 03.34'

E 007° 02.30'

BREMEN INFORMATION 128.525 MHz		ØRSTED OPERATIONS 131.905 MHz	
WEATHER INFORMATION 131.415 MHz 7x		LIGHTING & DIMMING 131.415 MHz 3x 100% 4x 30% (10%) 5x 10% (3%)	
HELIDECK HEIGHT 134 ft MSL	D-VALUE 23 m	MTOW 13.0 t	
APPROACH / DEPARTURE CORRIDOR 045° / 225° DECK HEADING 315°			
HIGHEST OBSTACLE ON INSTALLATION 37 ft ABOVE HLD (ANTENNA MAST)		HIGHEST OBSTACLE IN THE VICINITY 617 ft MSL (WTG)	
REFUELLING FACILITY N/A	GROUND POWER UNIT YES	LANDING NET N/A	STATUS LIGHT N/A

FIRE FIGHTING FACILITIES			
DIFFS AUTO + MAN + REMOTE ACTIVATION	2x HYDRANT SEMI-RIGID HOSES (30 m)	2x 10 kg CO₂	2x 25 kg DRY POWDER



GODE WIND 02

HLD IDENTIFICATION
GOW02-Z01

ICAO IDENTIFIER
N/A

OSS SIDE IDENTIFICATION
GOW02-Z01

FIXED NORMALLY UNATTENDED INSTALLATION
GODE WIND 02 OFFSHORE WINDFARM P/S GMBH & CO.KG

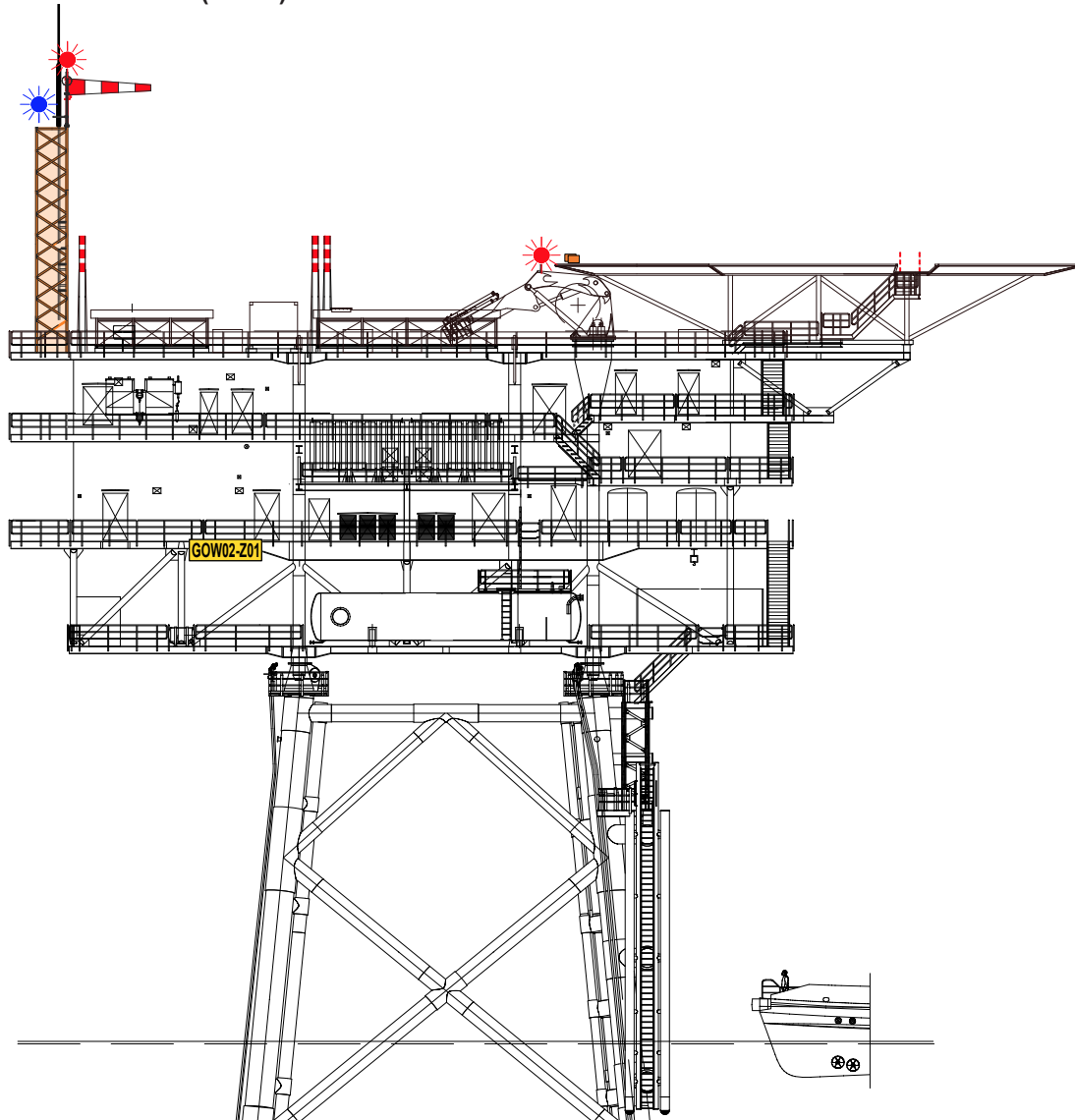
HLD REFERENCE POINT

N 54° 03.34'

E 007° 02.30'

BREMEN INFORMATION 128.525 MHz		ØRSTED OPERATIONS 131.905 MHz	
WEATHER INFORMATION 131.415 MHz 7x		LIGHTING & DIMMING 131.415 MHz 3x 100% 4x 30% (10%) 5x 10% (3%)	
HELIDECK HEIGHT 134 ft MSL	D-VALUE 23 m	MTOW 13.0 t	
APPROACH / DEPARTURE CORRIDOR 045° / 225° DECK HEADING 315°			
HIGHEST OBSTACLE ON INSTALLATION 37 ft ABOVE HLD (ANTENNA MAST)		HIGHEST OBSTACLE IN THE VICINITY 617 ft MSL (WTG)	
REFUELLING FACILITY N/A	GROUND POWER UNIT YES	LANDING NET N/A	STATUS LIGHT N/A
FIRE FIGHTING FACILITIES			
DIFFS AUTO + MAN + REMOTE ACTIVATION	2x HYDRANT SEMI-RIGID HOSES (30 m)	2x 10 kg CO₂	2x 25 kg DRY POWDER

INSTALLATION PROFILE VIEW (EAST)



ALL COURSES TRUE

VAR 1.9° E (2018)

GODE WIND 02

HLD IDENTIFICATION
GOW02-Z01

ICAO IDENTIFIER
N/A

OSS SIDE IDENTIFICATION
GOW02-Z01

FIXED NORMALLY UNATTENDED INSTALLATION
GODE WIND 02 OFFSHORE WINDFARM P/S GMBH & CO.KG

HLD REFERENCE POINT

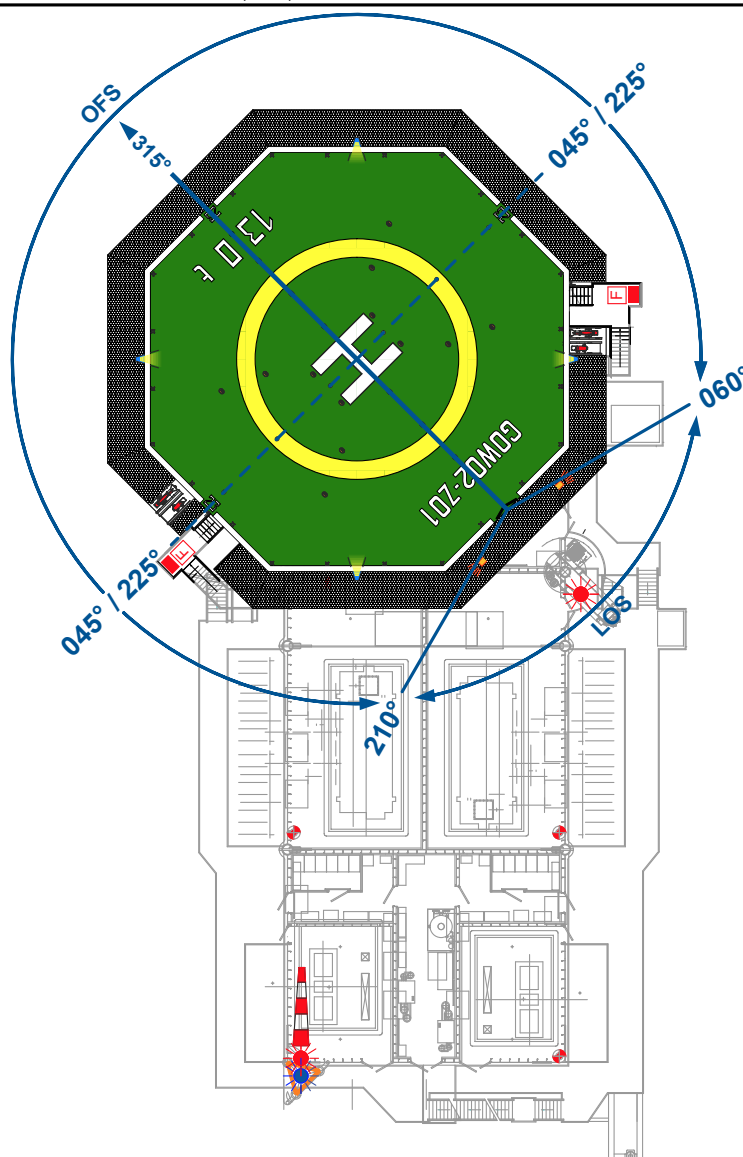
N 54° 03.34'

E 007° 02.30'

BREMEN INFORMATION 128.525 MHz		ØRSTED OPERATIONS 131.905 MHz	
WEATHER INFORMATION 131.415 MHz 7x		LIGHTING & DIMMING 131.415 MHz 3x 100% 4x 30% (10%) 5x 10% (3%)	
HELIDECK HEIGHT 134 ft MSL	D-VALUE 23 m	MTOW 13.0 t	
APPROACH / DEPARTURE CORRIDOR 045° / 225° DECK HEADING 315°			
HIGHEST OBSTACLE ON INSTALLATION 37 ft ABOVE HLD (ANTENNA MAST)		HIGHEST OBSTACLE IN THE VICINITY 617 ft MSL (WTG)	
REFUELLING FACILITY N/A	GROUND POWER UNIT YES	LANDING NET N/A	STATUS LIGHT N/A

FIRE FIGHTING FACILITIES			
DIFFS AUTO + MAN + REMOTE ACTIVATION	2x HYDRANT SEMI-RIGID HOSES (30 m)	2x 10 kg CO₂	2x 25 kg DRY POWDER

INSTALLATION TOP VIEW



GODE WIND 02

NIGHT APPROACH G02 045

HLD IDENTIFICATION
GOW02-Z01

ICAO IDENTIFIER
N/A

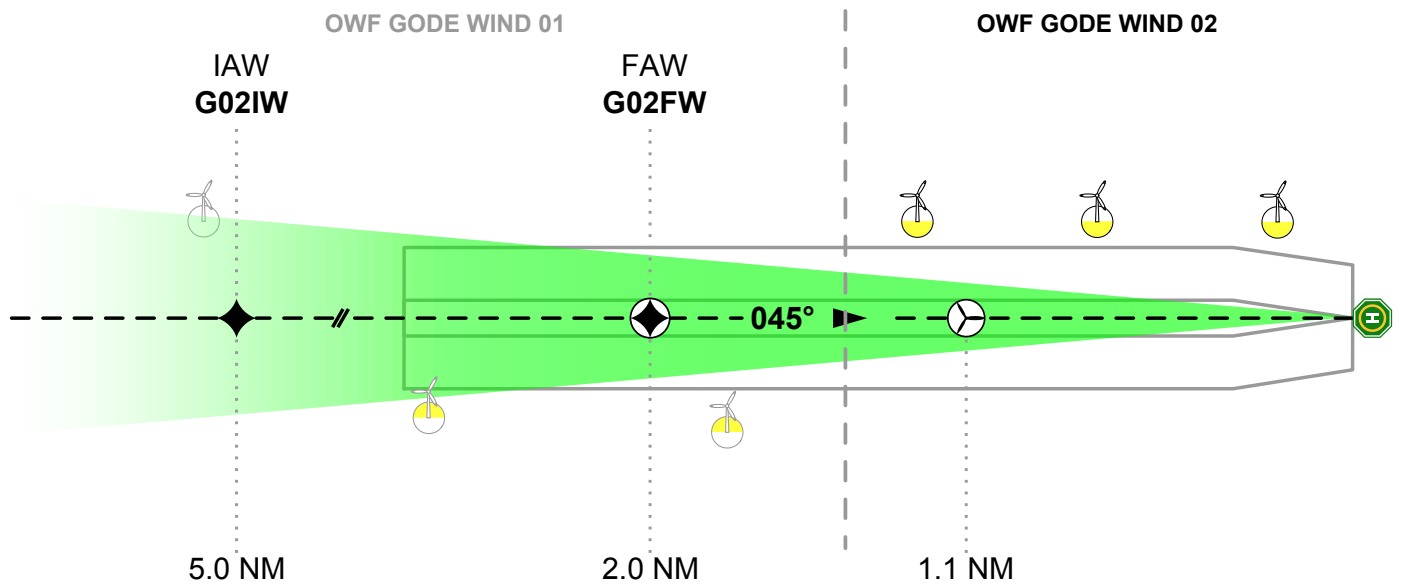
OSS SIDE IDENTIFICATION
GOW02-Z01

IAW G02IW N 53° 59.82' E 006° 56.26'	FAW G02FW N 54° 01.95' E 006° 59.89'
APPROACH DIRECTION 045°	GLIDESLOPE 4.5° (7.8%)

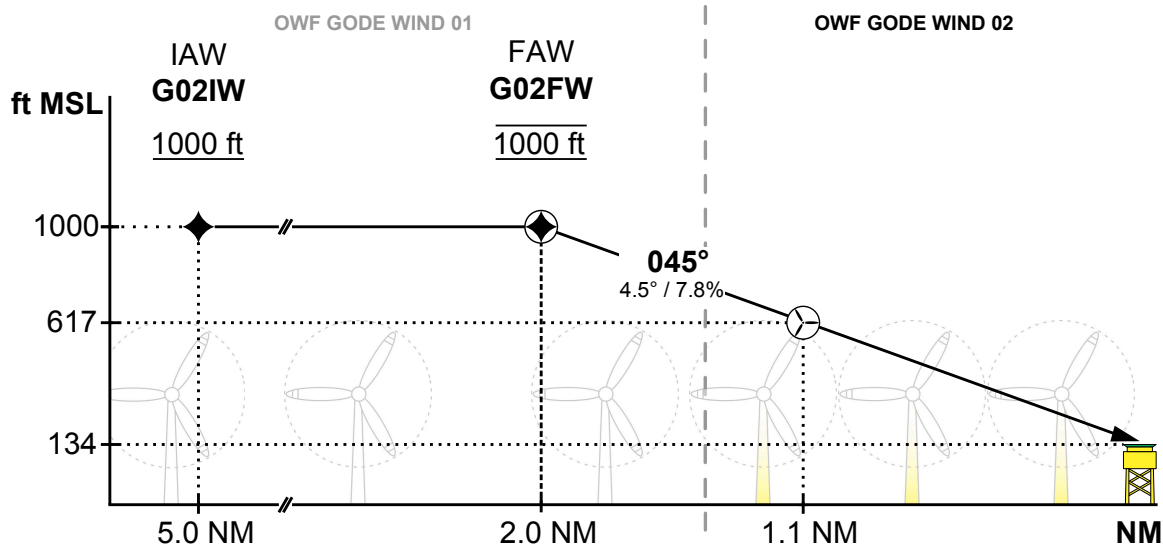
NIGHT APPROACH PROCEDURE

- APPROACH ONLY TO BE CONDUCTED WITH HAPI FUNCTIONING, UNAMBIGUOUSLY IDENTIFIED AND OSS ROOF DECK LIGHTING ACTIVATED
- BE AWARE APPROACH PROCEEDS THROUGH GODE WIND 01 WINDFARM
- APPROACH ALTITUDE NOT BELOW 1000 ft MSL
- ALIGN WITH APPROACH TRACK 045°
- INITIATE DESCENT WHEN HAPI INDICATES STEADY GREEN (AT 2.0 NM)
- BELOW WTG HEIGHT WHEN PASSING 617 ft MSL (AT APPROX. 1.1 NM)
- ADJUST APPROACH AT OWN DISCRETION TO PERFORM CAT A PROCEDURE

NIGHT APPROACH TOP VIEW



NIGHT APPROACH PROFILE VIEW



100 kts GS = 790 ft / min	90 kts GS = 720 ft / min	80 kts GS = 640 ft / min	70 kts GS = 560 ft / min	60 kts GS = 480 ft / min
---------------------------	--------------------------	--------------------------	--------------------------	--------------------------

ALL COURSES TRUE

VAR 1.9° E (2018)

GODE WIND 02 DEPARTURE G02 EE

HLD IDENTIFICATION
GOW02-Z01

ICAO IDENTIFIER
N/A

OSS SIDE IDENTIFICATION
GOW02-Z01

EXIT POINT G02EE

N 54° 50.23'

E 007° 05.52'

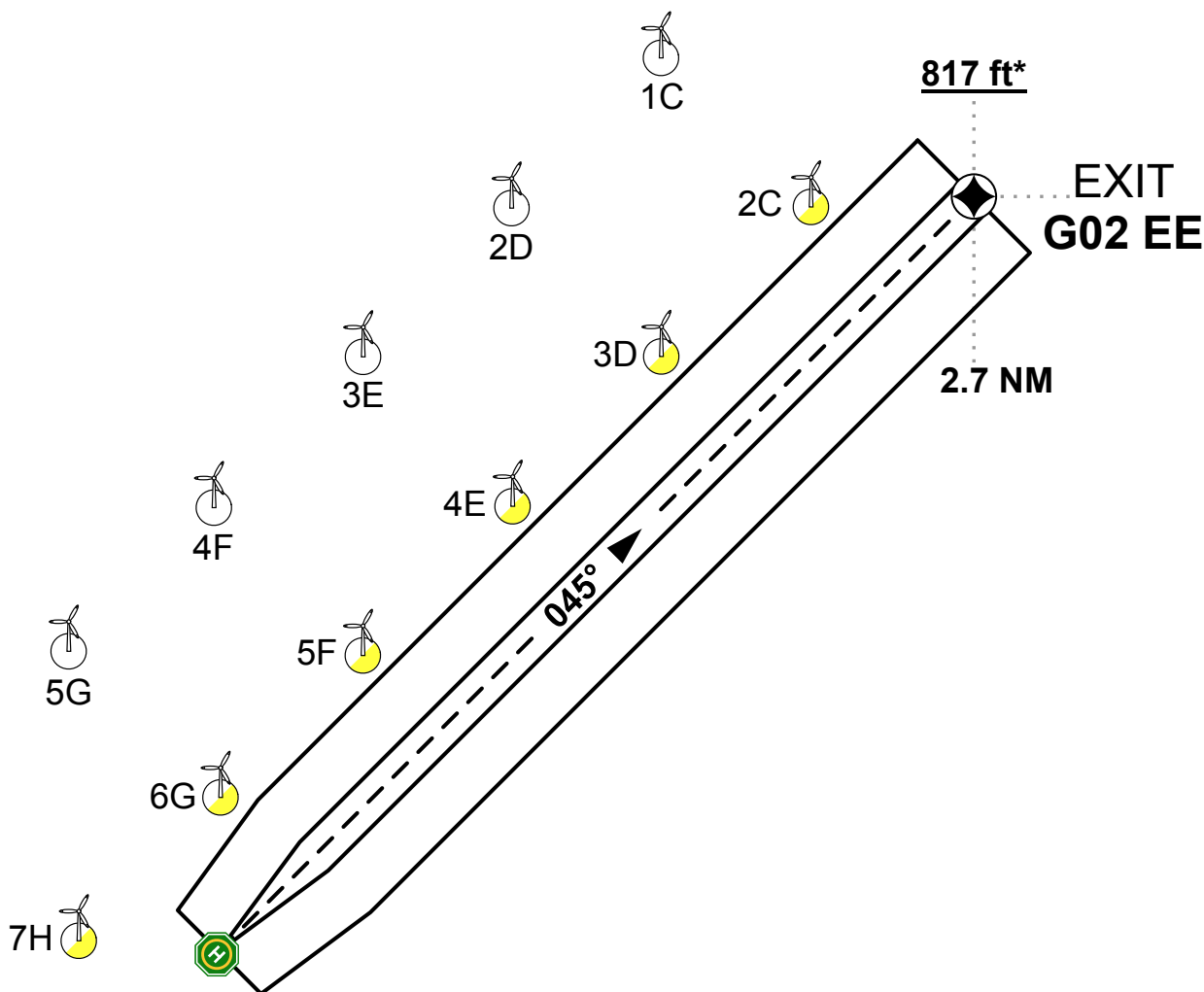
DEPARTURE DIRECTION

045°

DEPARTURE PROCEDURE

- DEPART ON TRACK 045°
- OBSTACLE-FREE WHEN WITHIN DEPARTURE CORRIDOR
- ABOVE WTG HEIGHT WHEN PASSING 617 ft MSL
- CORRIDOR DESIGNED TO REACH 200 ft ABOVE WTG HEIGHT AT EXIT POINT G02EE (4.5% CLIMB RATE)

DEPARTURE TOP VIEW



*200 ft above WTG

GODE WIND 02 NIGHT APPROACH G02 225

HLD IDENTIFICATION
GOW02-Z01

ICAO IDENTIFIER
N/A

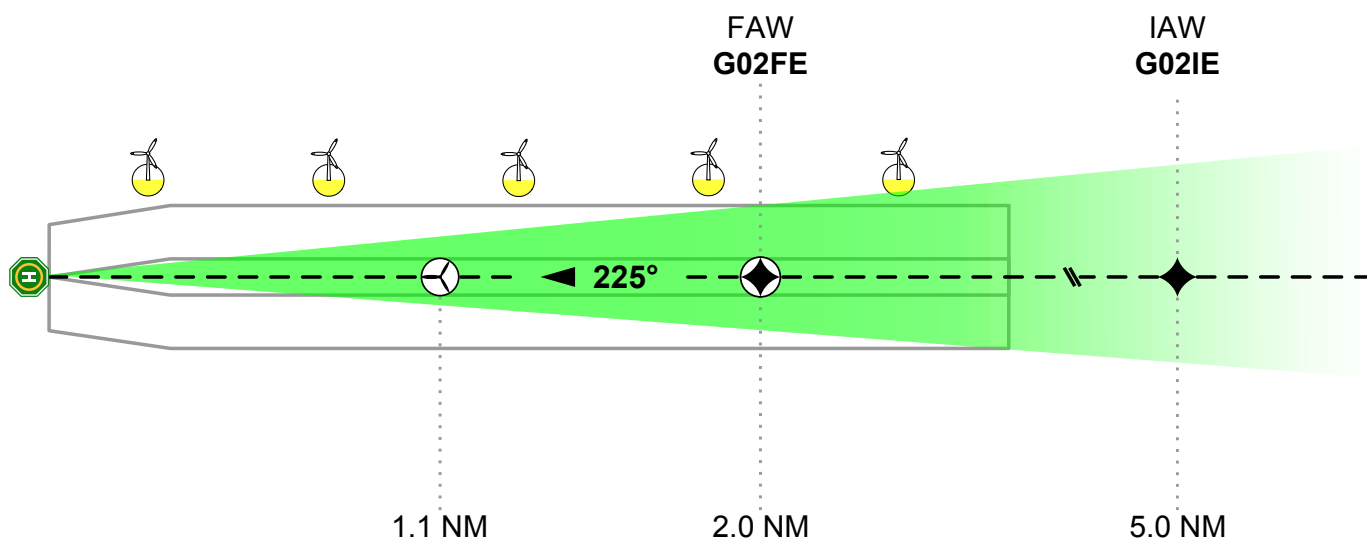
OSS SIDE IDENTIFICATION
GOW02-Z01

IAW G02IE N 54° 06.88' E 007° 08.32'	FAW G02FE N 54° 04.77' E 007° 04.74'
APPROACH DIRECTION 225°	GLIDESLOPE 4.5° (7.8%)

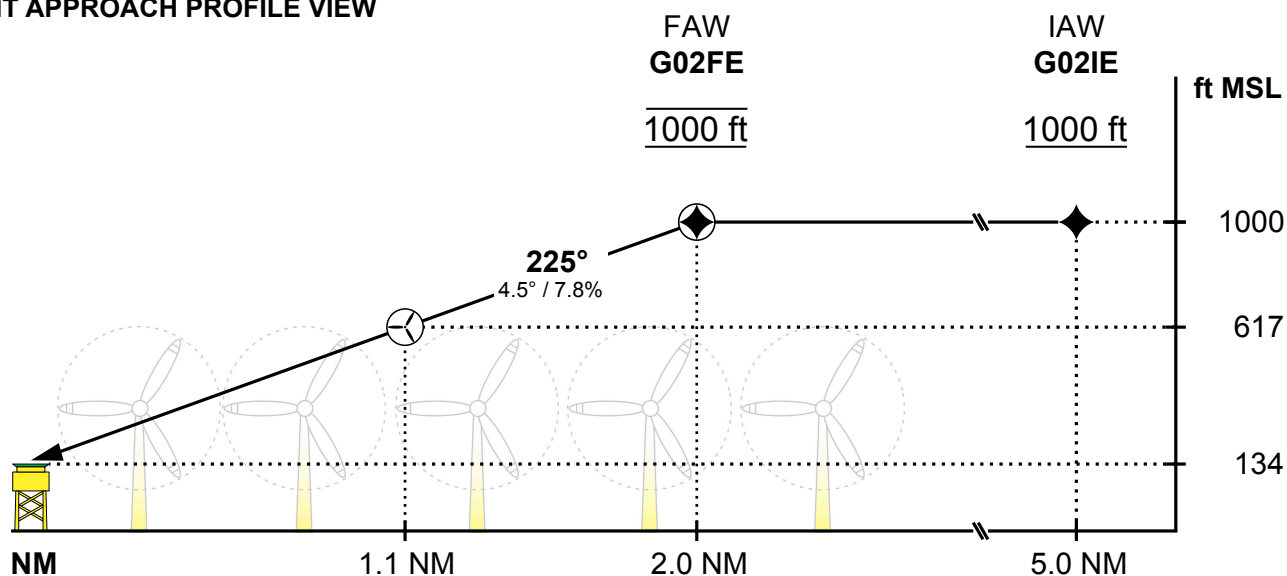
NIGHT APPROACH PROCEDURE

- **APPROACH ONLY TO BE CONDUCTED WITH HAPI FUNCTIONING, UNAMBIGUOUSLY IDENTIFIED AND OSS ROOF DECK LIGHTING ACTIVATED**
- **APPROACH ALTITUDE NOT BELOW 1000 ft MSL**
- **ALIGN WITH APPROACH TRACK 225°**
- **INITIATE DESCENT WHEN HAPI INDICATES STEADY GREEN (AT 2.0 NM)**
- **BELOW WTG HEIGHT WHEN PASSING 617 ft MSL (AT APPROX. 1.1 NM)**
- **ADJUST APPROACH AT OWN DISCRETION TO PERFORM CAT A PROCEDURE**

NIGHT APPROACH TOP VIEW



NIGHT APPROACH PROFILE VIEW



100 kts GS = 790 ft / min 90 kts GS = 720 ft / min 80 kts GS = 640 ft / min 70 kts GS = 560 ft / min 60 kts GS = 480 ft / min

ALL COURSES TRUE

VAR 1.9° E (2018)

GODE WIND 02 DEPARTURE G02 EW

HLD IDENTIFICATION
GOW02-Z01

ICAO IDENTIFIER
N/A

OSS SIDE IDENTIFICATION
GOW02-Z01

EXIT POINT G02EW

N 54° 30.81'

E 006° 18.67'

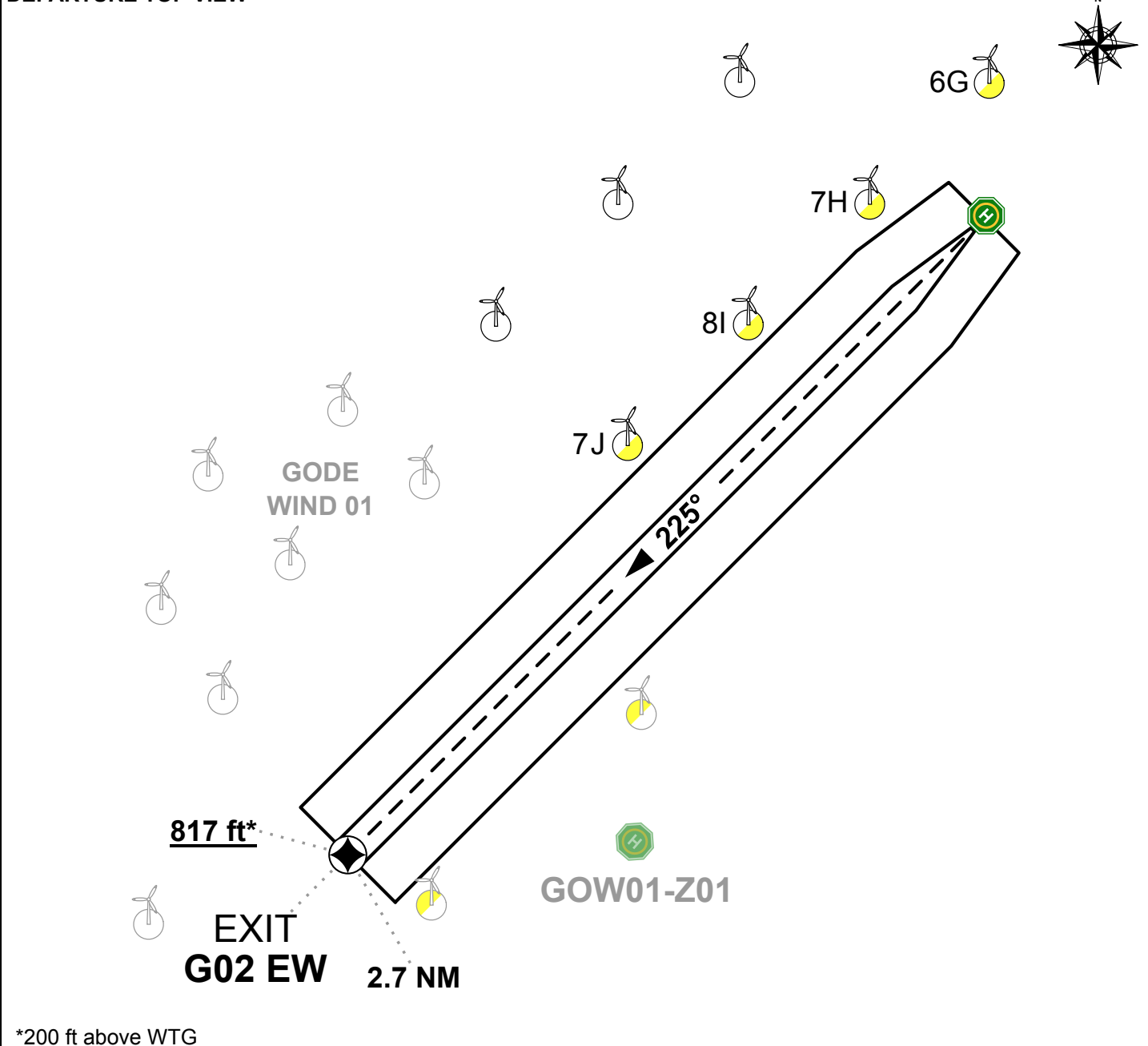
DEPARTURE DIRECTION

225°

DEPARTURE PROCEDURE

- DEPART ON TRACK 225°
- OBSTACLE-FREE WHEN WITHIN DEPARTURE CORRIDOR
- BE AWARE DEPARTURE CORRIDOR EXTENDS INTO GODE WIND 01 WINDFARM
- ABOVE WTG HEIGHT WHEN PASSING 617 ft MSL
- CORRIDOR DESIGNED TO REACH 200 ft ABOVE WTG HEIGHT AT EXIT POINT G02EW (4.5% CLIMB RATE)

DEPARTURE TOP VIEW



*200 ft above WTG