

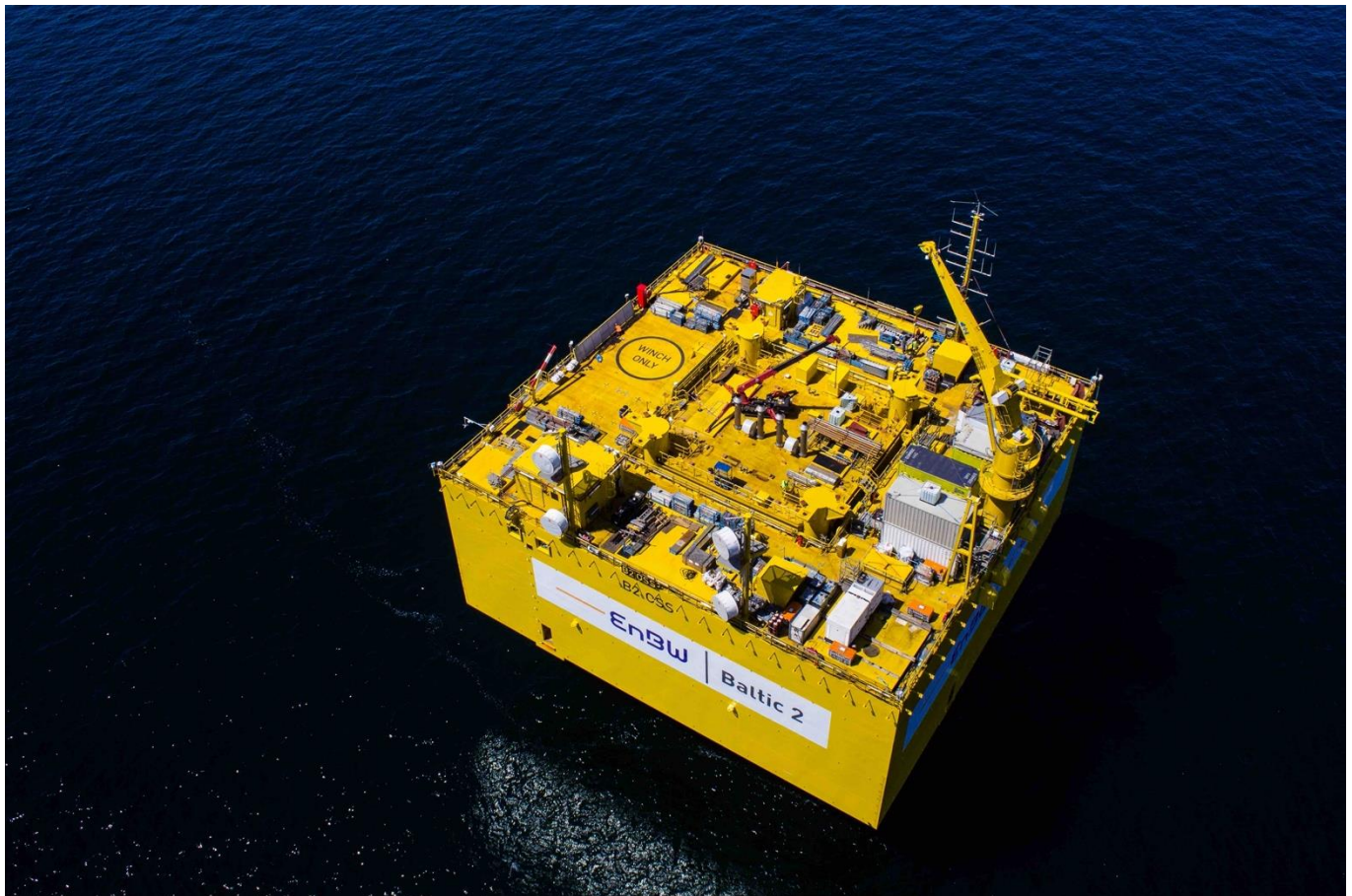
# RESCUE HOIST AREA BALTIC 2

OSS SIDE IDENTIFICATION  
**B2 OSS**

OFFSHORE WINDFARM  
**BALTIC 2**

FIXED NORMALLY UNATTENDED INSTALLATION  
ENBW BALTIC 2 GMBH & CO. KG

OSS CENTRE COORDINATE		
N 54° 58.33'		E 013° 09.69'
LANGEN INFORMATION 128.525 MHz		MCC / OSS 156.800 MHz (K16) / 156.525 MHz (K70)
WEATHER INFORMATION n/a		LIGHTING & DIMMING n/a
RHA HEIGHT 87 ft MSL	SIZE Ø 6.0 m	MAX LOAD 5.0kN/m <sup>2</sup>
APPROACH / DEPARTURE CORRIDOR 166°/346° (N) 165°/345° (S)		
HIGHEST OBSTACLE ON INSTALLATION 50 ft ABOVE RHA (ANTENNA MAST)		HIGHEST OBSTACLE IN THE VICINITY 488 ft MSL (WTG)
MAX D-VALUE FOR OBSTACLE CLEARANCE 14.30 m (FOR OBSTACLE DEVIATIONS SEE RESCUE HHA HANDBOOK)		



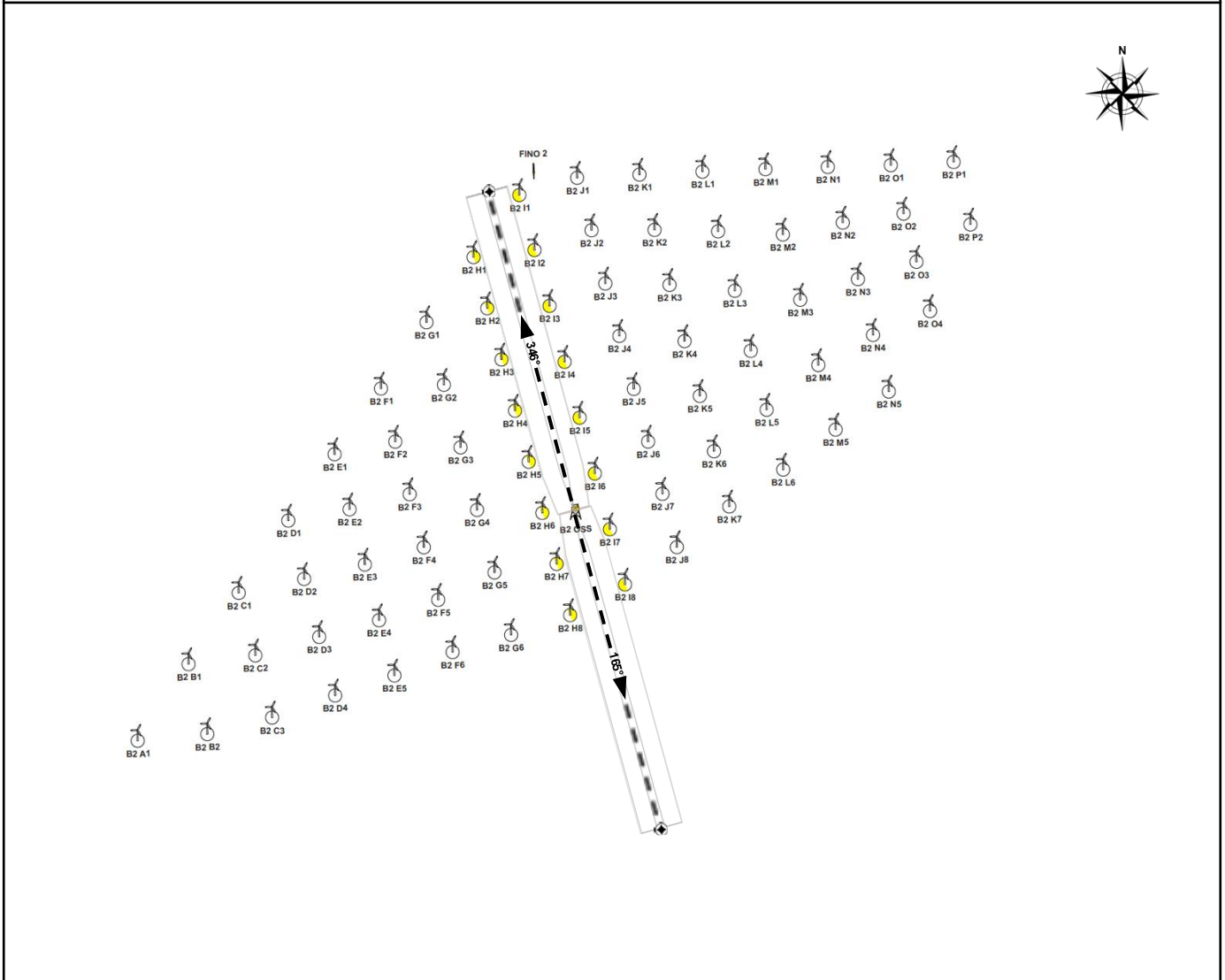
# RESCUE HOIST AREA BALTIC 2

OSS SIDE IDENTIFICATION  
**B2 OSS**

OFFSHORE WINDFARM  
**BALTIC 2**

FIXED NORMALLY UNATTENDED INSTALLATION  
ENBW BALTIC 2 GMBH & CO. KG

OSS CENTRE COORDINATE		
N 54° 58.33'		E 013° 09.69'
LANGEN INFORMATION 128.525 MHz		MCC / OSS 156.800 MHz (K16) / 156.525 MHz (K70)
WEATHER INFORMATION n/a		LIGHTING & DIMMING n/a
RHA HEIGHT 87 ft MSL	SIZE Ø 6.0 m	MAX LOAD 5.0kN/m <sup>2</sup>
APPROACH / DEPARTURE CORRIDOR 166°/346° (N) 165°/345° (S)		
HIGHEST OBSTACLE ON INSTALLATION 50 ft ABOVE RHA (ANTENNA MAST)		HIGHEST OBSTACLE IN THE VICINITY 488 ft MSL (WTG)
MAX D-VALUE FOR OBSTACLE CLEARANCE 14.30 m (FOR OBSTACLE DEVIATIONS SEE RESCUE HHA HANDBOOK)		



# BALTIC 2 DEPRATURE B2N

EXIT POINT B2N

N 55° 00,34'

E 013° 08,77'

**DEPARTURE PROCEDURE**

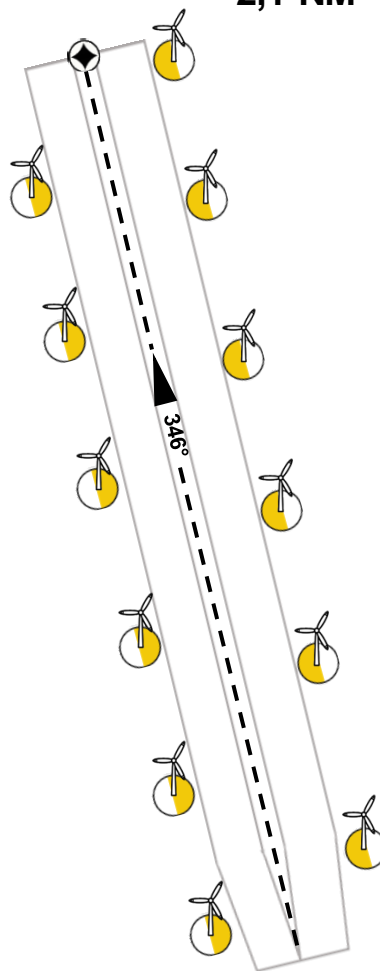
- DEPART ON TRACK 346°
- OBSTACLE-FREE WHEN WITHIN DEPARTURE CORRDIOR
- ABOVE WT HEIGHT WHEN PASSING 454ft
- CORRIDOR DESIGNED TO REACH 200FT ABOVE WT HEIGHT AT EXIT POINT B2N (4,5% CLIMB RATE)

**DEPARTURE TOP VIEW**

654 ft\*

EXIT  
B2N

2,1 NM



\*200ft above WT

# BALTIC 2 DEPRATURE B2S

## EXIT POINT B2S

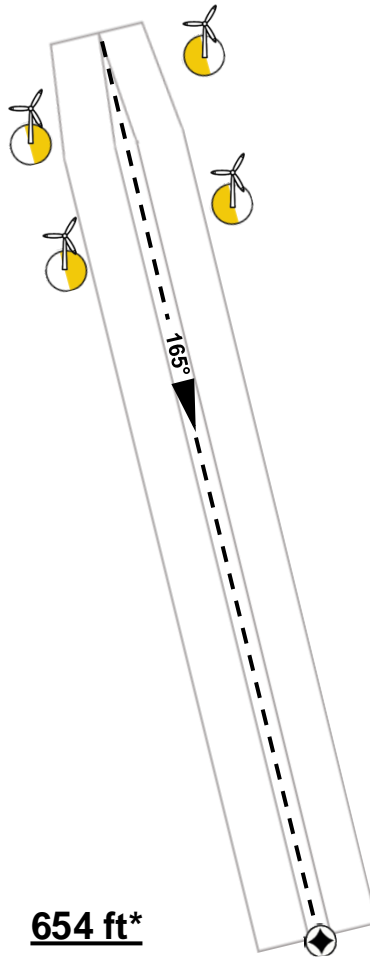
N 54° 56,32'

E 013° 10,66'

### DEPARTURE PROCEDURE

- DEPART ON TRACK 165°
- OBSTACLE-FREE WHEN WITHIN DEPARTURE CORRDIOR
- ABOVE WT HEIGHT WHEN PASSING 454ft
- CORRIDOR DESIGNED TO REACH 200FT ABOVE WT HEIGHT AT EXIT POINT B2S (4,5% CLIMB RATE)

### DEPARTURE TOP VIEW



EXIT  
B2S

\*200ft above WT