

MERKUR

HLD IDENTIFICATION
MO-OSS

ICAO IDENTIFIER
TBD

OSS SIDE IDENTIFICATION
MO OSS

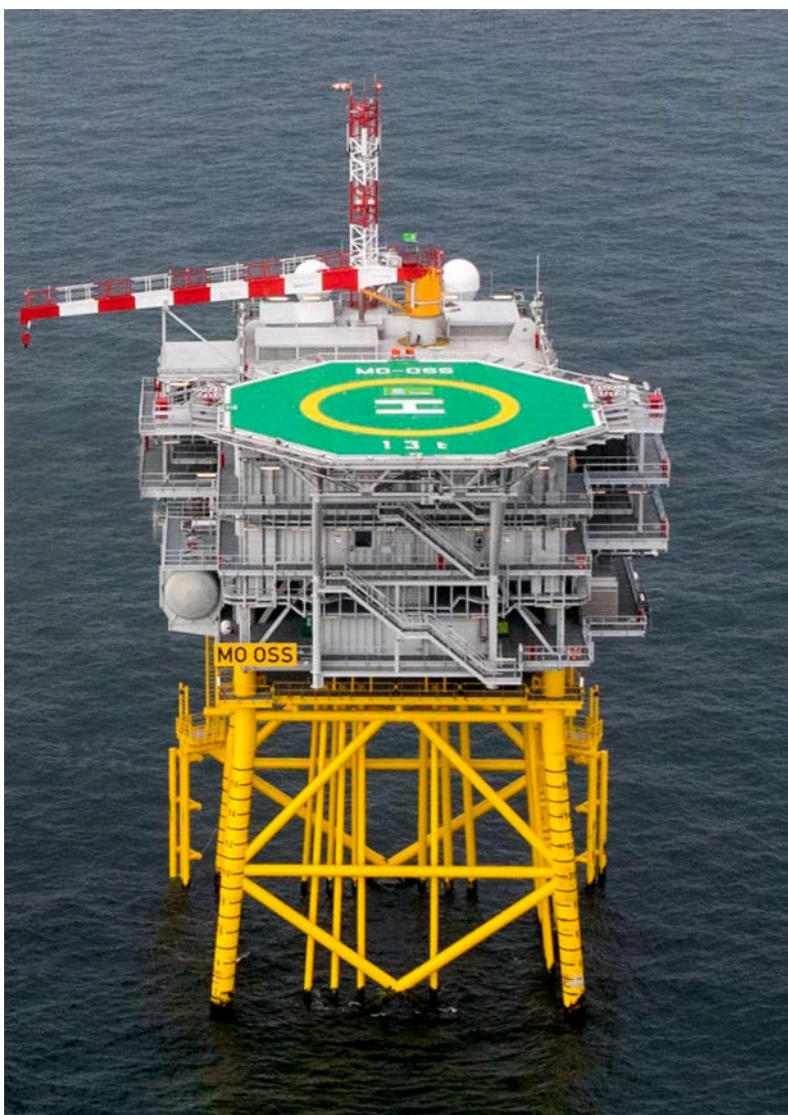
**FIXED NORMALLY UNATTENDED INSTALLATION
MERKUR OFFSHORE GMBH**

HLD REFERENCE POINT

N 54° 02.24'

E 006° 33.65'

BREMEN INFORMATION 128.525 MHz		EWE CONTROL CENTRE 151.350 MHz	
WEATHER INFORMATION 131.565 MHz 7x		LIGHTING & DIMMING 131.565 MHz 3x 100% 4x 30% (10%) 5x 10% (3%)	
HELIDECK HEIGHT 146 ft MSL	D-VALUE 22.20 m	MTOW 13 t	
APPROACH / DEPARTURE CORRIDOR 178° / 358° DECK HEADING 088°			
HIGHEST OBSTACLE ON INSTALLATION 46 ft ABOVE HLD (ANTENNA MAST)		HIGHEST OBSTACLE IN THE VICINITY 580 ft MSL (WTG)	
REFUELLING FACILITY N/A	GROUND POWER UNIT YES (1700A/28V DC)	LANDING NET N/A	STATUS LIGHT N/A
FIRE FIGHTING FACILITIES			
DIFFS AUTO + MAN + REMOTE ACTIVATION	2x HYDRANT SEMI-RIGID HOSES (25 m)	2x 10 kg CO₂	2x 25 kg DRY POWDER



MERKUR

HLD IDENTIFICATION

MO-OSS

ICAO IDENTIFIER

TBD

OSS SIDE IDENTIFICATION

MO OSS

FIXED NORMALLY UNATTENDED INSTALLATION

MERKUR OFFSHORE GMBH

HLD REFERENCE POINT

N 54° 02.24'

E 006° 33.65'

BREMEN INFORMATION 128.525 MHz		EWE CONTROL CENTRE 151.350 MHz	
WEATHER INFORMATION 131.565 MHz 7x		LIGHTING & DIMMING 131.565 MHz 3x 100% 4x 30% (10%) 5x 10% (3%)	
HELIDECK HEIGHT 146 ft MSL	D-VALUE 22.20 m	MTOW 13 t	
APPROACH / DEPARTURE CORRIDOR 178° / 358° DECK HEADING 088°			
HIGHEST OBSTACLE ON INSTALLATION 46 ft ABOVE HLD (ANTENNA MAST)		HIGHEST OBSTACLE IN THE VICINITY 580 ft MSL (WTG)	
REFUELLING FACILITY N/A	GROUND POWER UNIT YES (1700A/28V DC)	LANDING NET N/A	STATUS LIGHT N/A
FIRE FIGHTING FACILITIES			
DIFFS AUTO + MAN + REMOTE ACTIVATION	2x HYDRANT SEMI-RIGID HOSES (25 m)	2x 10 kg CO₂	2x 25 kg DRY POWDER
NON - COMPLIANCES • NIL		LIMITATIONS • TEMPORARILY VFR DAY ONLY	
REMARKS • CONTACT EWE CONTROL CENTRE PRIOR TO ENTERING OWF AND FOR FURTHER CLEARANCES • BE AWARE OF WTG IN CLOSE PROXIMITY TO HELIDECK • OSS LIMITED TO MAX.12 PERSONS • OSS WX DATA FOR INFORMATION ONLY			

MERKUR

HLD IDENTIFICATION
MO-OSS

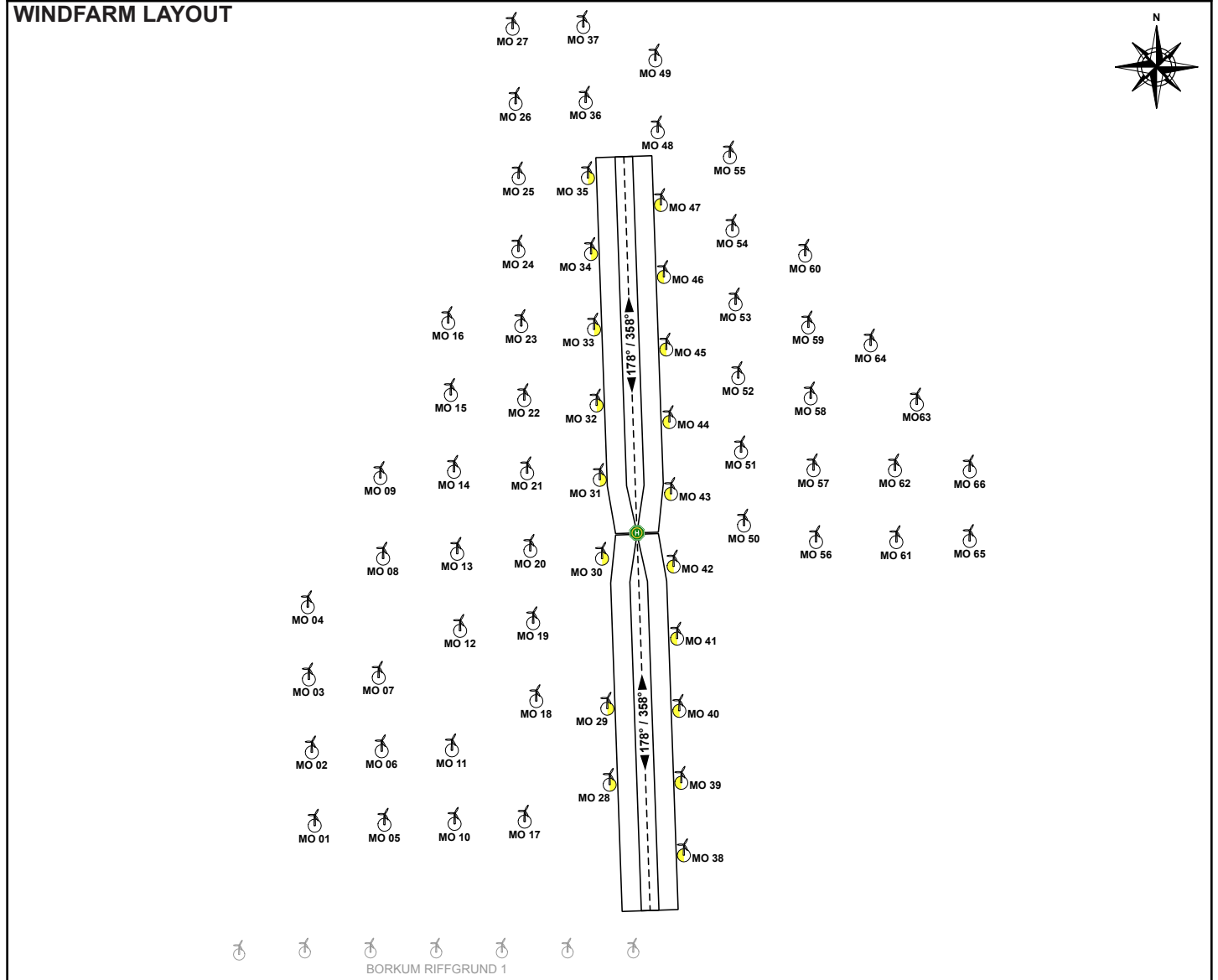
ICAO IDENTIFIER
TBD

OSS SIDE IDENTIFICATION
MO OSS

FIXED NORMALLY UNATTENDED INSTALLATION
MERKUR OFFSHORE GMBH

HLD REFERENCE POINT			
N 54° 02.24'		E 006° 33.65'	
BREMEN INFORMATION 128.525 MHz		EWE CONTROL CENTRE 151.350 MHz	
WEATHER INFORMATION 131.565 MHz 7x		LIGHTING & DIMMING 131.565 MHz 3x 100% 4x 30% (10%) 5x 10% (3%)	
HELIDECK HEIGHT 146 ft MSL	D-VALUE 22.20 m		MTOW 13 t
APPROACH / DEPARTURE CORRIDOR 178° / 358° DECK HEADING 088°			
HIGHEST OBSTACLE ON INSTALLATION 46 ft ABOVE HLD (ANTENNA MAST)		HIGHEST OBSTACLE IN THE VICINITY 580 ft MSL (WTG)	
REFUELLING FACILITY N/A	GROUND POWER UNIT YES (1700A/28V DC)	LANDING NET N/A	STATUS LIGHT N/A

FIRE FIGHTING FACILITIES			
DIFFS AUTO + MAN + REMOTE ACTIVATION	2x HYDRANT SEMI-RIGID HOSES (25 m)	2x 10 kg CO₂	2x 25 kg DRY POWDER



ALL COURSES TRUE VAR 1.6° E (2018)

MERKUR

HLD IDENTIFICATION
MO-OSS

ICAO IDENTIFIER
TBD

OSS SIDE IDENTIFICATION
MO OSS

FIXED NORMALLY UNATTENDED INSTALLATION
MERKUR OFFSHORE GMBH

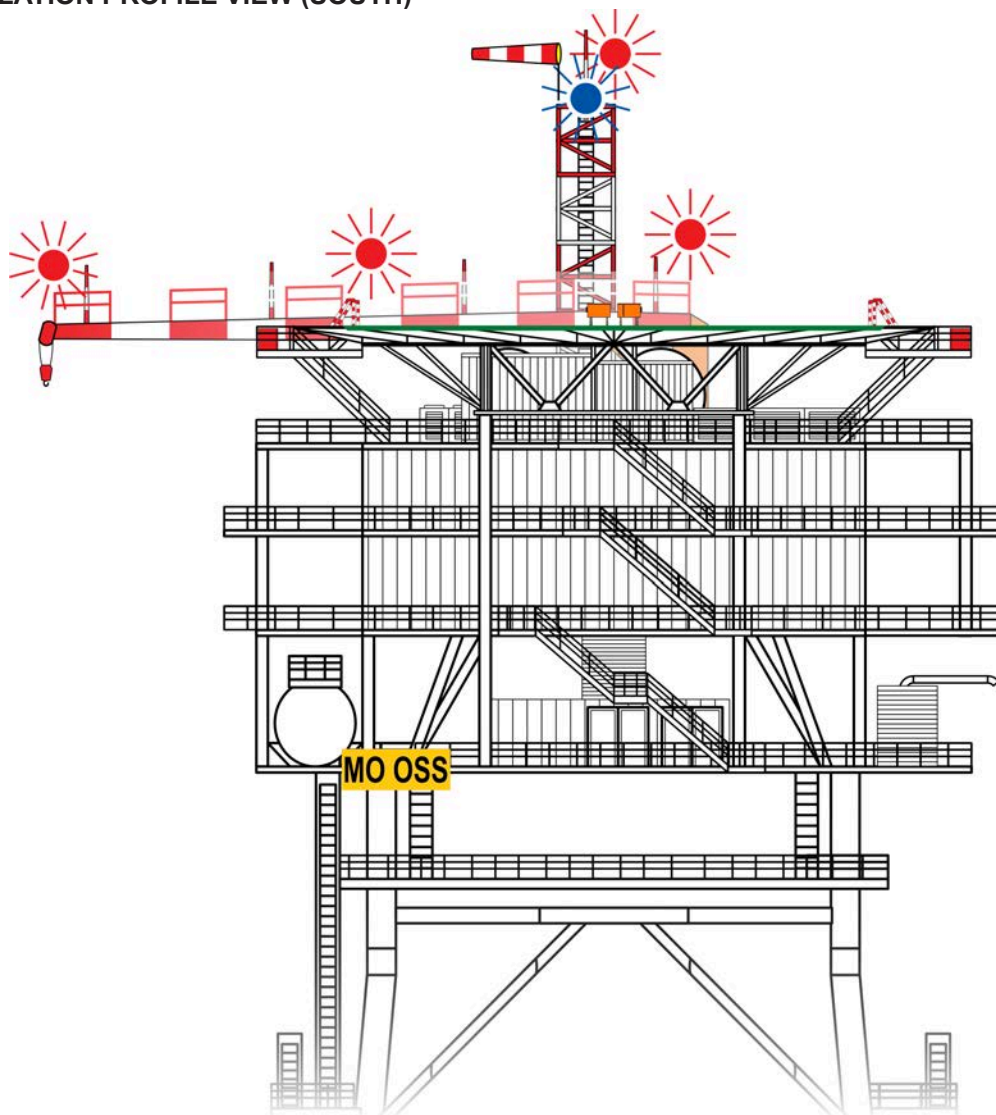
HLD REFERENCE POINT

N 54° 02.24'

E 006° 33.65'

BREMEN INFORMATION 128.525 MHz		EWE CONTROL CENTRE 151.350 MHz	
WEATHER INFORMATION 131.565 MHz 7x		LIGHTING & DIMMING 131.565 MHz 3x 100% 4x 30% (10%) 5x 10% (3%)	
HELIDECK HEIGHT 146 ft MSL	D-VALUE 22.20 m	MTOW 13 t	
APPROACH / DEPARTURE CORRIDOR 178° / 358° DECK HEADING 088°			
HIGHEST OBSTACLE ON INSTALLATION 46 ft ABOVE HLD (ANTENNA MAST)		HIGHEST OBSTACLE IN THE VICINITY 580 ft MSL (WTG)	
REFUELLING FACILITY N/A	GROUND POWER UNIT YES (1700A/28V DC)	LANDING NET N/A	STATUS LIGHT N/A
FIRE FIGHTING FACILITIES			
DIFFS AUTO + MAN + REMOTE ACTIVATION	2x HYDRANT SEMI-RIGID HOSES (25 m)	2x 10 kg CO₂	2x 25 kg DRY POWDER

INSTALLATION PROFILE VIEW (SOUTH)



MERKUR

HLD IDENTIFICATION
MO-OSS

ICAO IDENTIFIER
TBD

OSS SIDE IDENTIFICATION
MO OSS

FIXED NORMALLY UNATTENDED INSTALLATION
MERKUR OFFSHORE GMBH

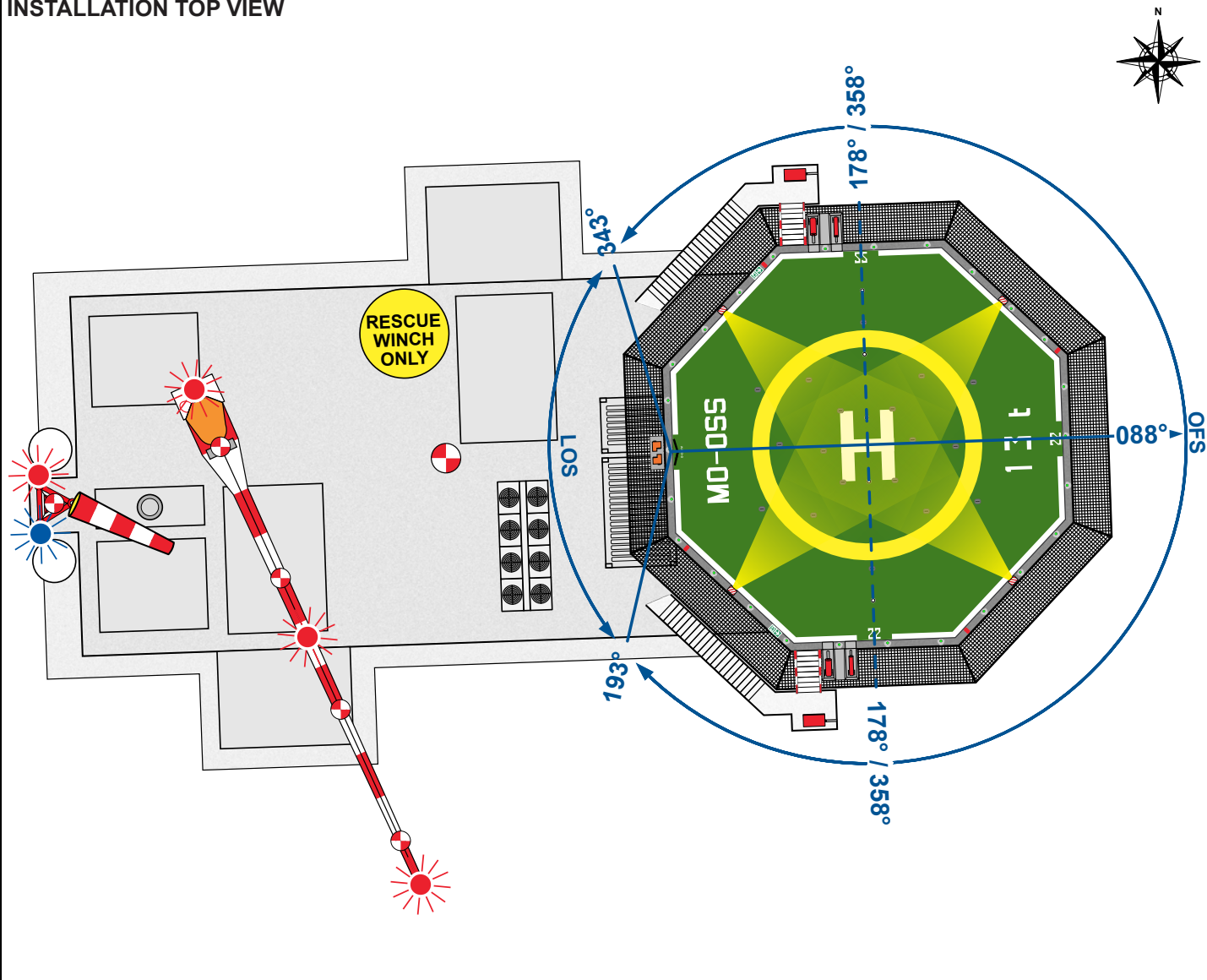
HLD REFERENCE POINT

N 54° 02.24'

E 006° 33.65'

BREMEN INFORMATION 128.525 MHz		EWE CONTROL CENTRE 151.350 MHz	
WEATHER INFORMATION 131.565 MHz 7x		LIGHTING & DIMMING 131.565 MHz 3x 100% 4x 30% (10%) 5x 10% (3%)	
HELIDECK HEIGHT 146 ft MSL	D-VALUE 22.20 m	MTOW 13 t	
APPROACH / DEPARTURE CORRIDOR 178° / 358° DECK HEADING 088°			
HIGHEST OBSTACLE ON INSTALLATION 46 ft ABOVE HLD (ANTENNA MAST)		HIGHEST OBSTACLE IN THE VICINITY 580 ft MSL (WTG)	
REFUELLING FACILITY N/A	GROUND POWER UNIT YES (1700A/28V DC)	LANDING NET N/A	STATUS LIGHT N/A
FIRE FIGHTING FACILITIES			
DIFFS AUTO + MAN + REMOTE ACTIVATION	2x HYDRANT SEMI-RIGID HOSES (25 m)	2x 10 kg CO₂	2x 25 kg DRY POWDER

INSTALLATION TOP VIEW



MERKUR DEPARTURE MER ES

EXIT POINT MERES

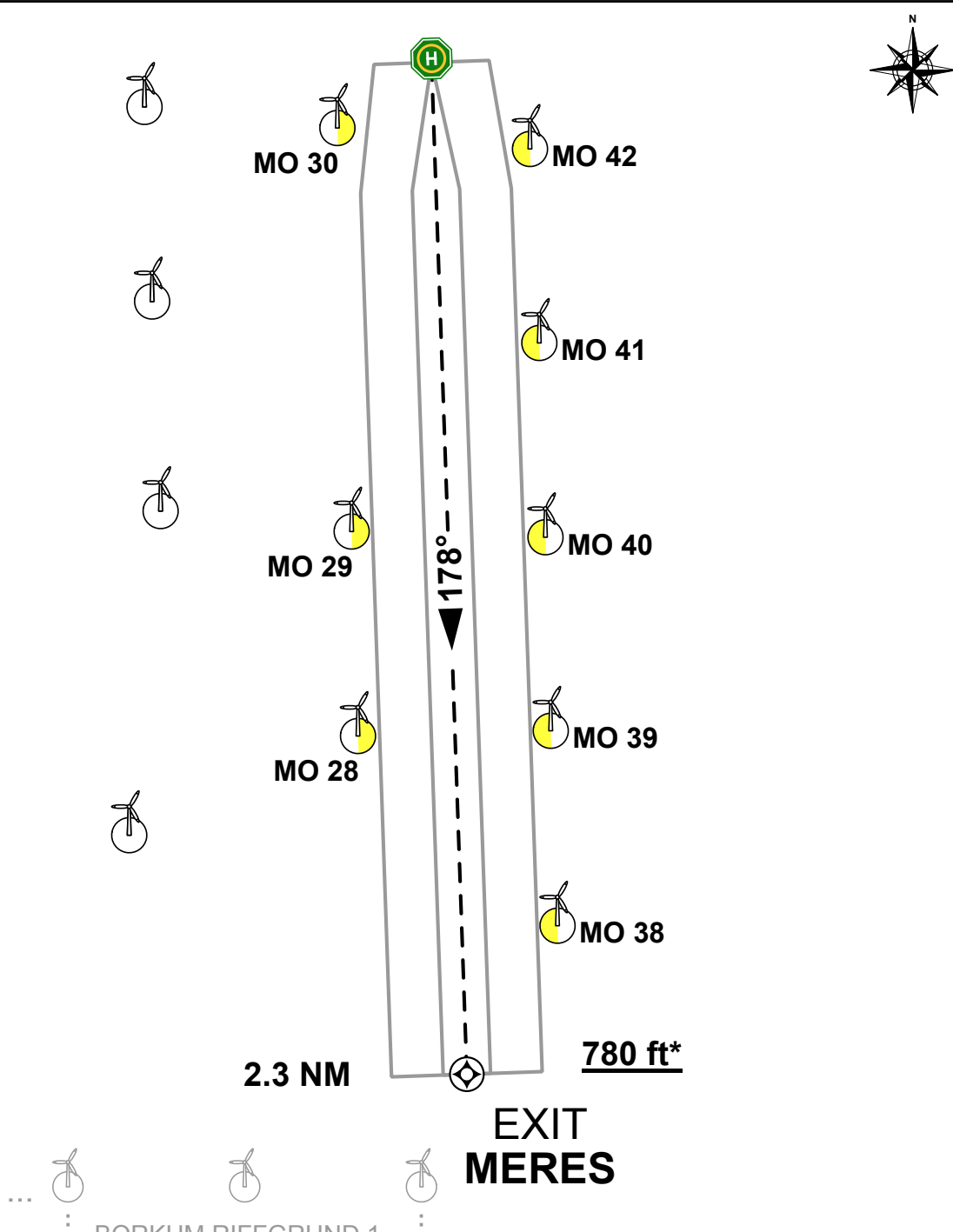
N 53° 59.92'

E 006° 33.76'

DEPARTURE PROCEDURE

- DEPART ON TRACK 178°
- OBSTACLE-FREE WHEN WITHIN DEPARTURE CORRIDOR
- ABOVE WTG HEIGHT WHEN PASSING 580 ft MSL
- CORRIDOR DESIGNED TO REACH 200 ft ABOVE WTG HEIGHT AT EXIT POINT VMOES (4.5% CLIMB RATE)

DEPARTURE TOP VIEW



*200 ft above WTG

MERKUR DEPARTURE MER EN

EXIT POINT VMOEN

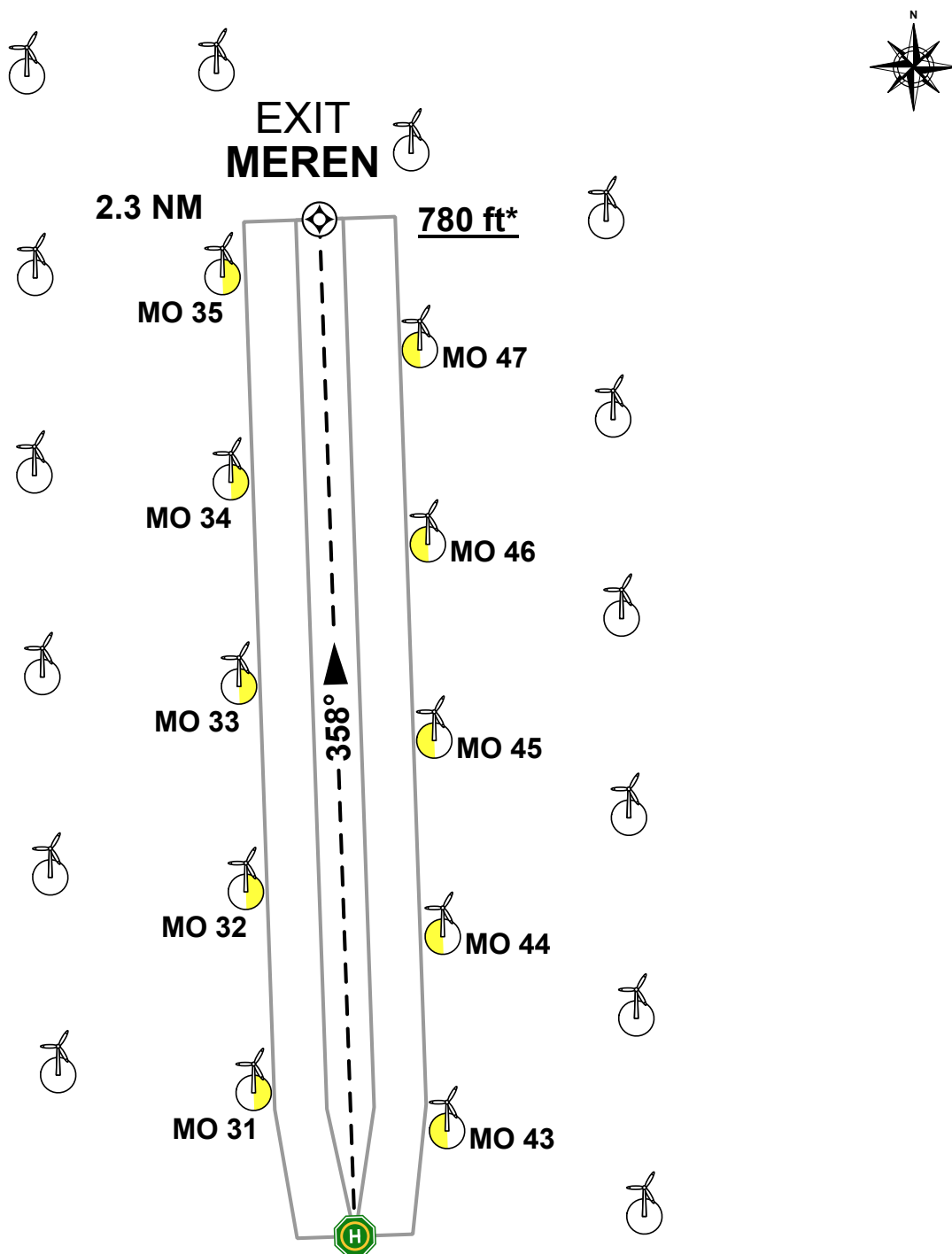
N 54° 04.56'

E 006° 33.52'

DEPARTURE PROCEDURE

- DEPART ON TRACK 358°
- OBSTACLE-FREE WHEN WITHIN DEPARTURE CORRIDOR
- ABOVE WTG HEIGHT WHEN PASSING 580 ft MSL
- CORRIDOR DESIGNED TO REACH 200 ft ABOVE WTG HEIGHT AT EXIT POINT VMOEN (4.5% CLIMB RATE)

DEPARTURE TOP VIEW



*200 ft above WTG