

NORDSEE ONE

HLD IDENTIFICATION
NORDSEE ONE

ICAO IDENTIFIER
EDYN

OSS SIDE IDENTIFICATION
OSS

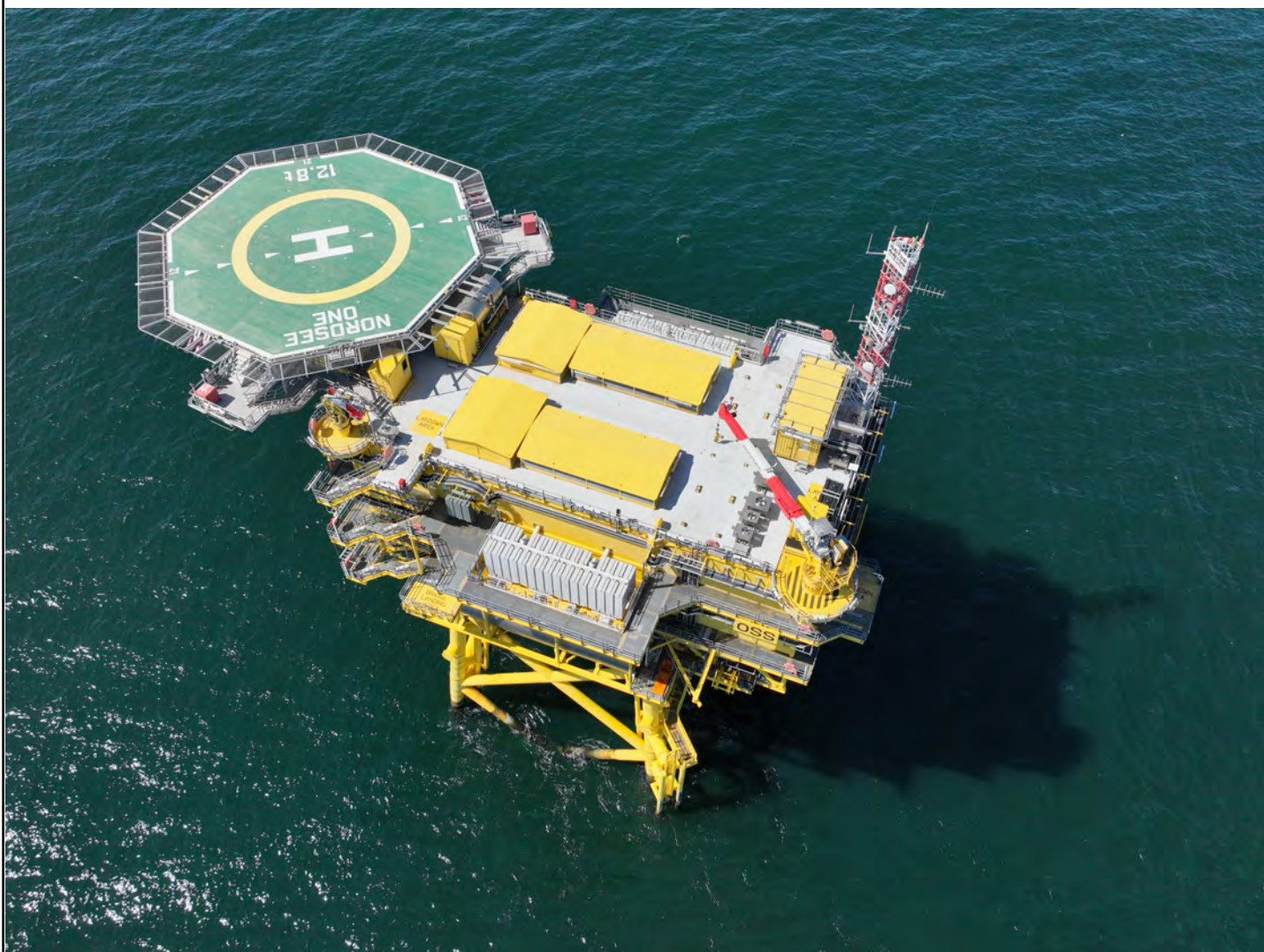
FIXED NORMALLY UNATTENDED INSTALLATION
NORDSEE ONE GMBH

HLD REFERENCE POINT

N 53° 58.94'

E 006° 50.17'

BREMEN INFORMATION 128.525 MHz		MCC / HLO 151.170 MHz	
WEATHER INFORMATION 131.760 MHz 3x		LIGHTING & DIMMING 131.760 MHz 5x 100% 7x 10% (3%) ↔ 7x 30% (10%)	
HELIDECK HEIGHT 131 ft MSL	D-VALUE 20.90 m	MTOW 12.8 t	
APPROACH / DEPARTURE CORRIDOR			
N: 007° / 187°		S: 004° / 184°	
HIGHEST OBSTACLE ON INSTALLATION 33 ft ABOVE HLD (ANTENNA MAST)		HIGHEST OBSTACLE IN THE VICINITY 505 ft MSL (WTG)	
REFUELLING FACILITY N/A	GROUND POWER UNIT N/A	LANDING NET N/A	STATUS LIGHT N/A
FIRE FIGHTING FACILITIES			
DIFFS AUTO + MAN ACTIVATION	2x HYDRANT SEMI-RIGID HOSES (30 m)	2x 10 kg CO₂	2x 25 kg DRY POWDER



NORDSEE ONE

HLD IDENTIFICATION
NORDSEE ONE

ICAO IDENTIFIER
EDYN

OSS SIDE IDENTIFICATION
OSS

FIXED NORMALLY UNATTENDED INSTALLATION
NORDSEE ONE GMBH

HLD REFERENCE POINT

N 53° 58.94'

E 006° 50.17'

BREMEN INFORMATION 128.525 MHz		MCC / HLO 151.170 MHz	
WEATHER INFORMATION 131.760 MHz 3x		LIGHTING & DIMMING 131.760 MHz 5x 100% 7x 10% (3%) ↔ 7x 30% (10%)	
HELIDECK HEIGHT 131 ft MSL	D-VALUE 20.90 m	MTOW 12.8 t	
APPROACH / DEPARTURE CORRIDOR			
N: 007° / 187°		S: 004° / 184°	
<i>DECK HEADING 277°</i>			
HIGHEST OBSTACLE ON INSTALLATION 33 ft ABOVE HLD (ANTENNA MAST)		HIGHEST OBSTACLE IN THE VICINITY 505 ft MSL (WTG)	
REFUELLING FACILITY N/A	GROUND POWER UNIT N/A	LANDING NET N/A	STATUS LIGHT N/A
FIRE FIGHTING FACILITIES			
DIFFS AUTO + MAN ACTIVATION	2x HYDRANT SEMI-RIGID HOSES (30 m)	2x 10 kg CO₂	2x 25 kg DRY POWDER
NON - COMPLIANCES • NIL		LIMITATIONS • NIL	

REMARKS

- CONTACT MCC / HLO PRIOR TO ENTERING OWF AND FOR FURTHER CLEARANCES
- BE AWARE OF WTG IN CLOSE PROXIMITY TO HELIDECK
- FLIGHT OPERATIONS ONLY TO BE CONDUCTED WITH CRANE RESTING CLEAR OF OBSTACLE PROTECTED SURFACES
- APPROACH MARKINGS AND LIGHTING NOT ALIGNED WITH PREFERRED FINAL APPROACH DIRECTIONS (DIVERGENCE 2°)
- OSS WX DATA FOR INFORMATION ONLY

NORDSEE ONE

HLD IDENTIFICATION
NORDSEE ONE

ICAO IDENTIFIER
EDYN

OSS SIDE IDENTIFICATION
OSS

FIXED NORMALLY UNATTENDED INSTALLATION
NORDSEE ONE GMBH

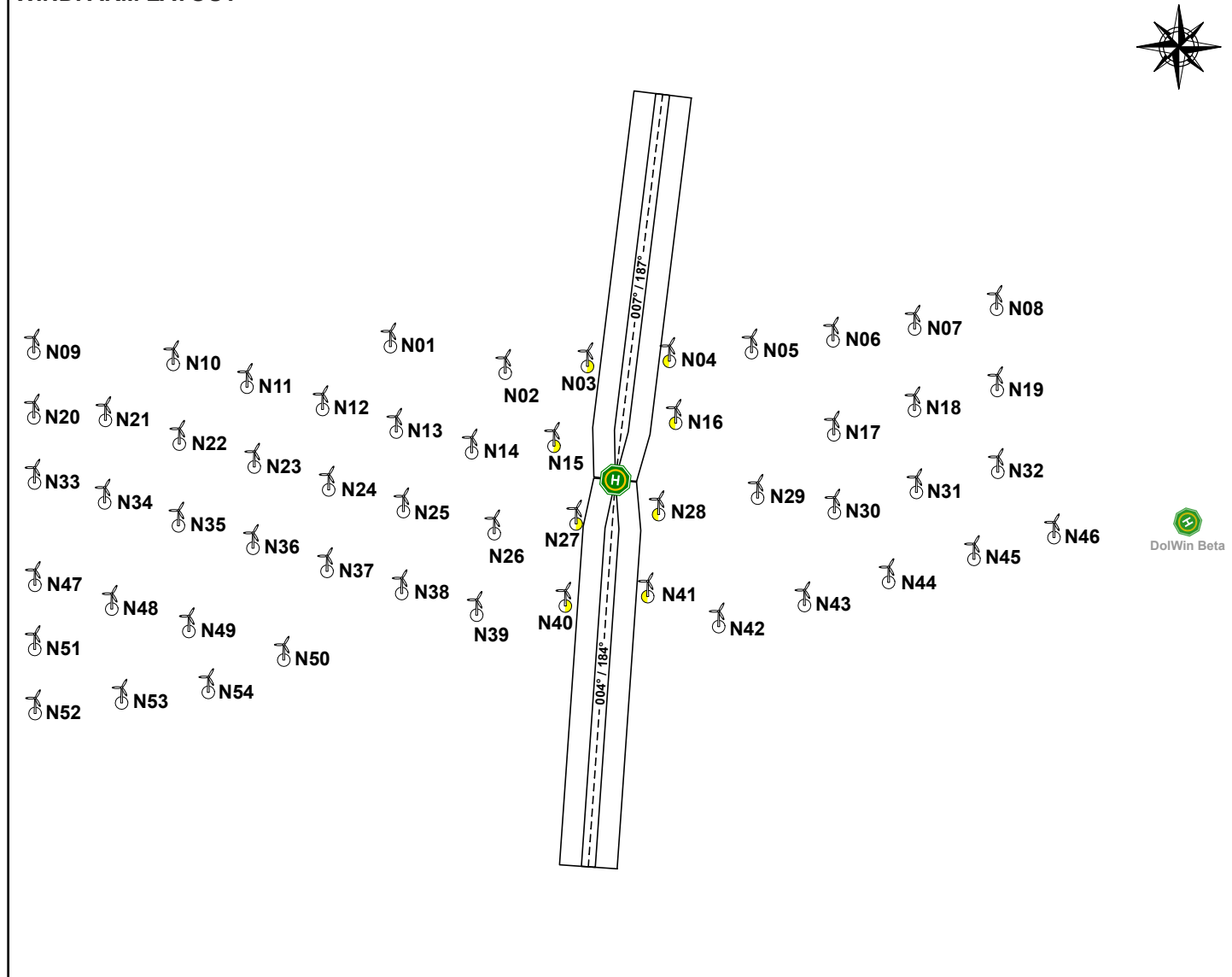
HLD REFERENCE POINT

N 53° 58.94'

E 006° 50.17'

BREMEN INFORMATION 128.525 MHz		MCC / HLO 151.170 MHz	
WEATHER INFORMATION 131.760 MHz 3x		LIGHTING & DIMMING 131.760 MHz 5x 100% 7x 10% (3%) ↔ 7x 30% (10%)	
HELIDECK HEIGHT 131 ft MSL	D-VALUE 20.90 m	MTOW 12.8 t	
APPROACH / DEPARTURE CORRIDOR			
N: 007° / 187°		S: 004° / 184°	
DECK HEADING 277°			
HIGHEST OBSTACLE ON INSTALLATION 33 ft ABOVE HLD (ANTENNA MAST)		HIGHEST OBSTACLE IN THE VICINITY 505 ft MSL (WTG)	
REFUELLING FACILITY N/A	GROUND POWER UNIT N/A	LANDING NET N/A	STATUS LIGHT N/A
FIRE FIGHTING FACILITIES			
DIFFS AUTO + MAN ACTIVATION	2x HYDRANT SEMI-RIGID HOSES (30 m)	2x 10 kg CO₂	2x 25 kg DRY POWDER

WINDFARM LAYOUT



NORDSEE ONE

HLD IDENTIFICATION
NORDSEE ONE

ICAO IDENTIFIER
EDYN

OSS SIDE IDENTIFICATION
OSS

FIXED NORMALLY UNATTENDED INSTALLATION
NORDSEE ONE GMBH

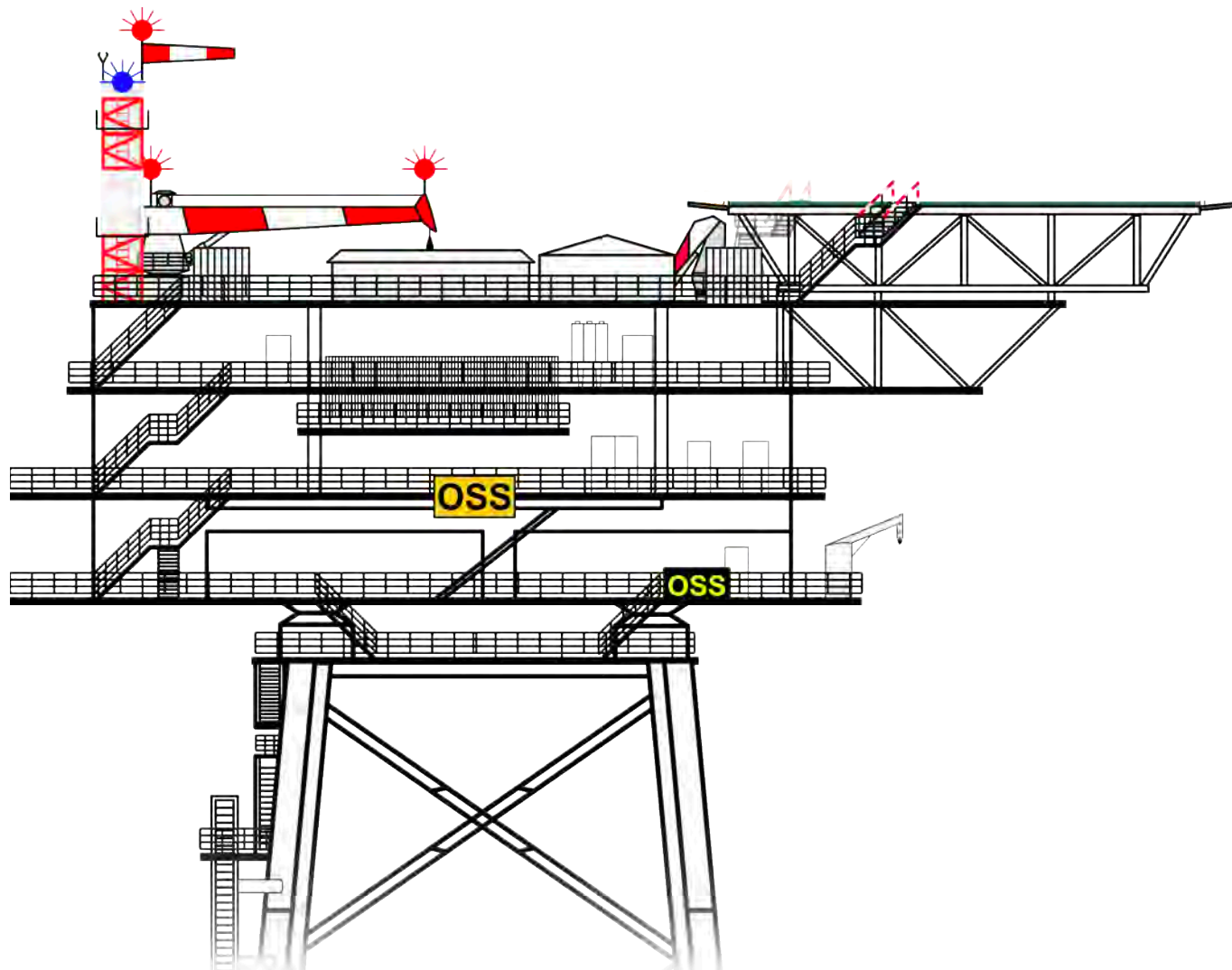
HLD REFERENCE POINT

N 53° 58.94'

E 006° 50.17'

BREMEN INFORMATION 128.525 MHz		MCC / HLO 151.170 MHz	
WEATHER INFORMATION 131.760 MHz 3x		LIGHTING & DIMMING 131.760 MHz 5x 100% 7x 10% (3%) ←→ 7x 30% (10%)	
HELIDECK HEIGHT 131 ft MSL	D-VALUE 20.90 m	MTOW 12.8 t	
APPROACH / DEPARTURE CORRIDOR			
N: 007° / 187°		S: 004° / 184°	
HIGHEST OBSTACLE ON INSTALLATION 33 ft ABOVE HLD (ANTENNA MAST)		HIGHEST OBSTACLE IN THE VICINITY 505 ft MSL (WTG)	
REFUELLING FACILITY N/A	GROUND POWER UNIT N/A	LANDING NET N/A	STATUS LIGHT N/A
FIRE FIGHTING FACILITIES			
DIFFS AUTO + MAN ACTIVATION	2x HYDRANT SEMI-RIGID HOSES (30 m)	2x 10 kg CO₂	2x 25 kg DRY POWDER

INSTALLATION PROFILE VIEW (SOUTH)



NORDSEE ONE

HLD IDENTIFICATION
NORDSEE ONE

ICAO IDENTIFIER
EDYN

OSS SIDE IDENTIFICATION
OSS

FIXED NORMALLY UNATTENDED INSTALLATION
NORDSEE ONE GMBH

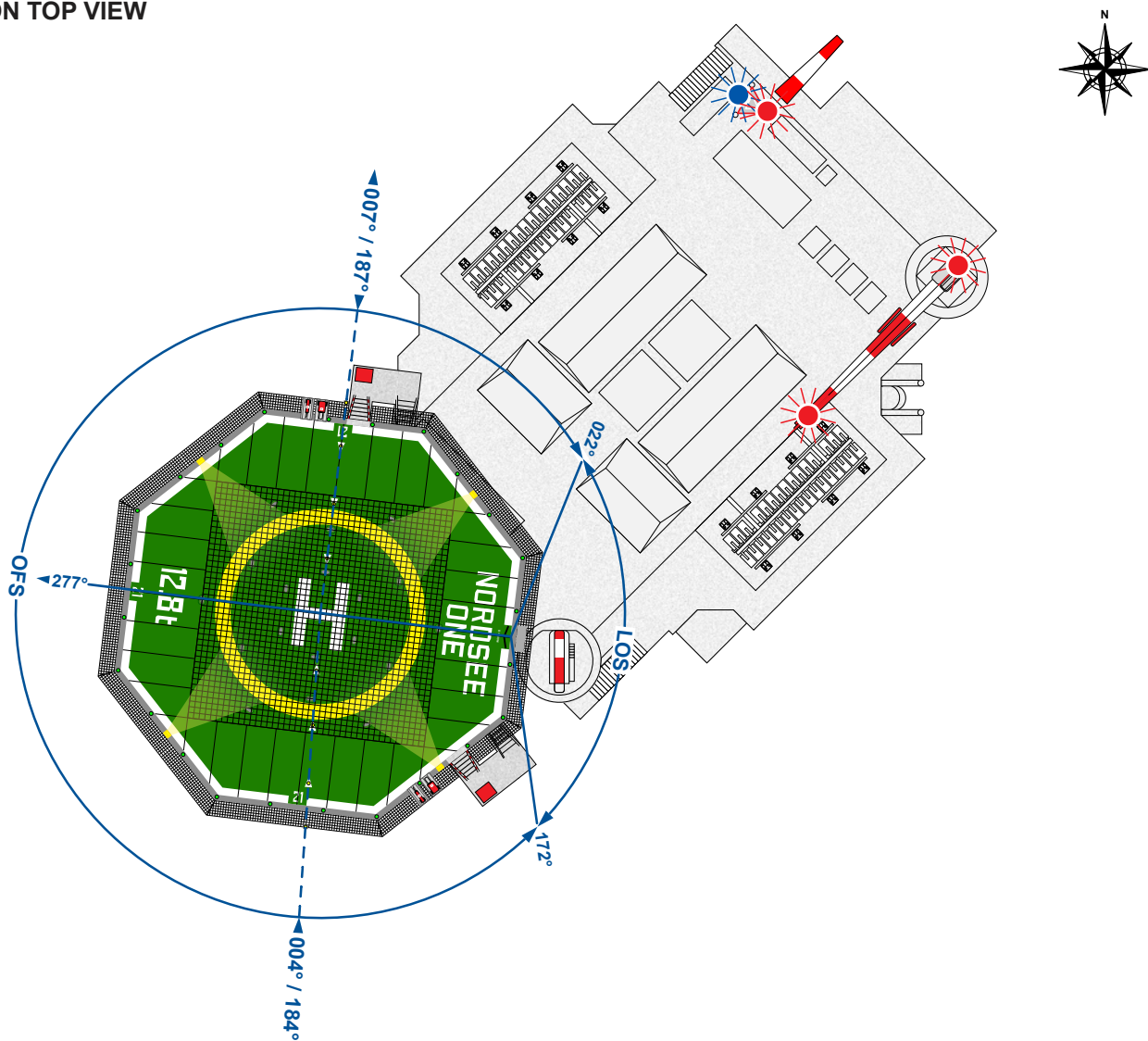
HLD REFERENCE POINT

N 53° 58.94'

E 006° 50.17'

BREMEN INFORMATION 128.525 MHz		MCC / HLO 151.170 MHz	
WEATHER INFORMATION 131.760 MHz 3x		LIGHTING & DIMMING 131.760 MHz 5x 100% 7x 10% (3%) ↔ 7x 30% (10%)	
HELIDECK HEIGHT 131 ft MSL	D-VALUE 20.90 m	MTOW 12.8 t	
APPROACH / DEPARTURE CORRIDOR			
N: 007° / 187°		S: 004° / 184°	
HIGHEST OBSTACLE ON INSTALLATION 33 ft ABOVE HLD (ANTENNA MAST)		HIGHEST OBSTACLE IN THE VICINITY 505 ft MSL (WTG)	
REFUELLING FACILITY N/A	GROUND POWER UNIT N/A	LANDING NET N/A	STATUS LIGHT N/A
FIRE FIGHTING FACILITIES			
DIFFS AUTO + MAN ACTIVATION	2x HYDRANT SEMI-RIGID HOSES (30 m)	2x 10 kg CO₂	2x 25 kg DRY POWDER

INSTALLATION TOP VIEW



NORDSEE ONE DEPARTURE NO1 ES

EXIT POINT NO1ES

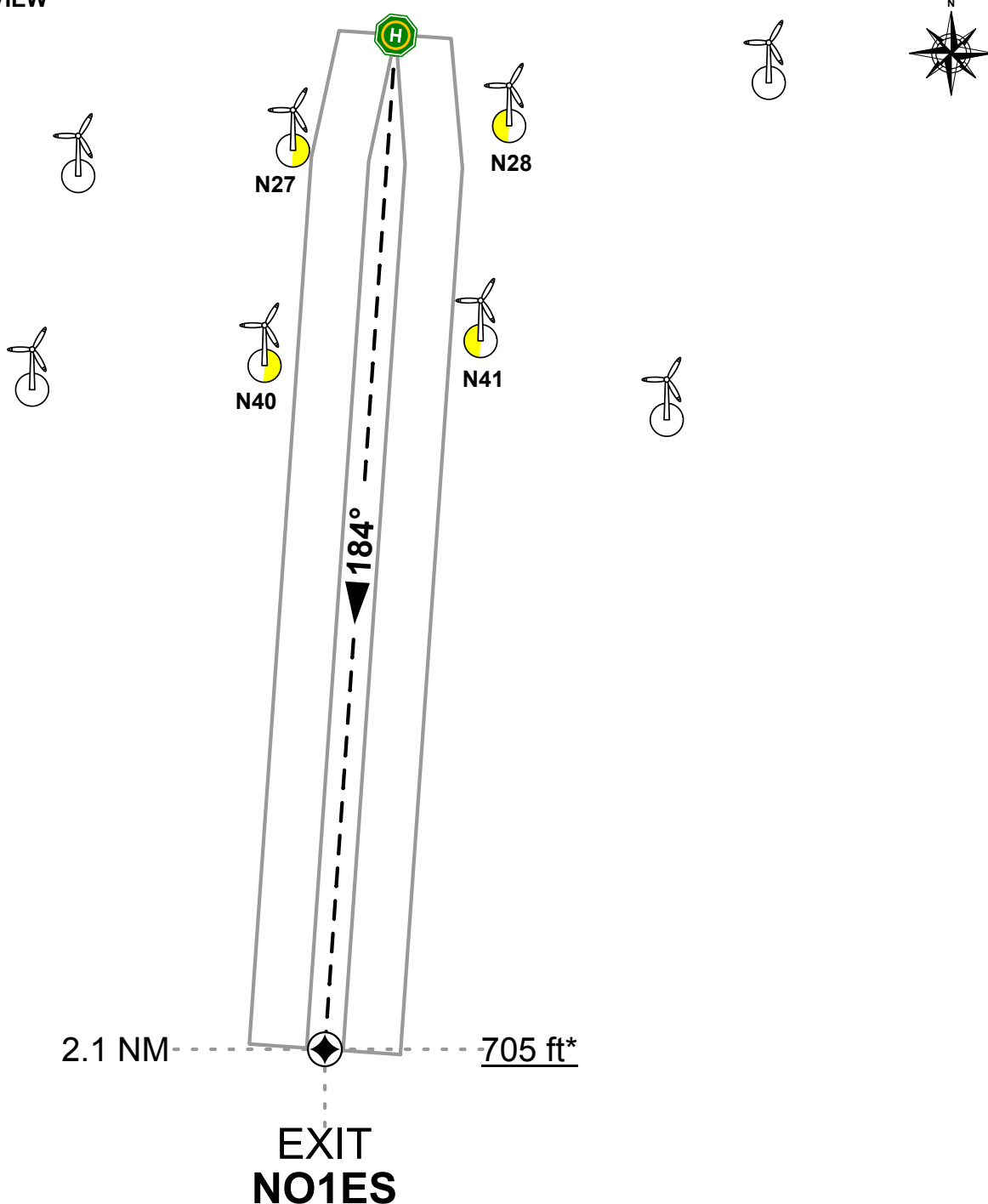
N 53° 56.84'

E 006° 49.92'

DEPARTURE PROCEDURE

- DEPART ON TRACK 184°
- OBSTACLE-FREE WHEN WITHIN DEPARTURE CORRIDOR
- ABOVE WTG HEIGHT WHEN PASSING 505 ft MSL
- CORRIDOR DESIGNED TO REACH 200 ft ABOVE WTG HEIGHT AT EXIT POINT NO1ES (4.5% CLIMB RATE)

DEPARTURE TOP VIEW



*200 ft above WTG

NORDSEE ONE DEPARTURE NO1 EN

EXIT POINT NO1EN

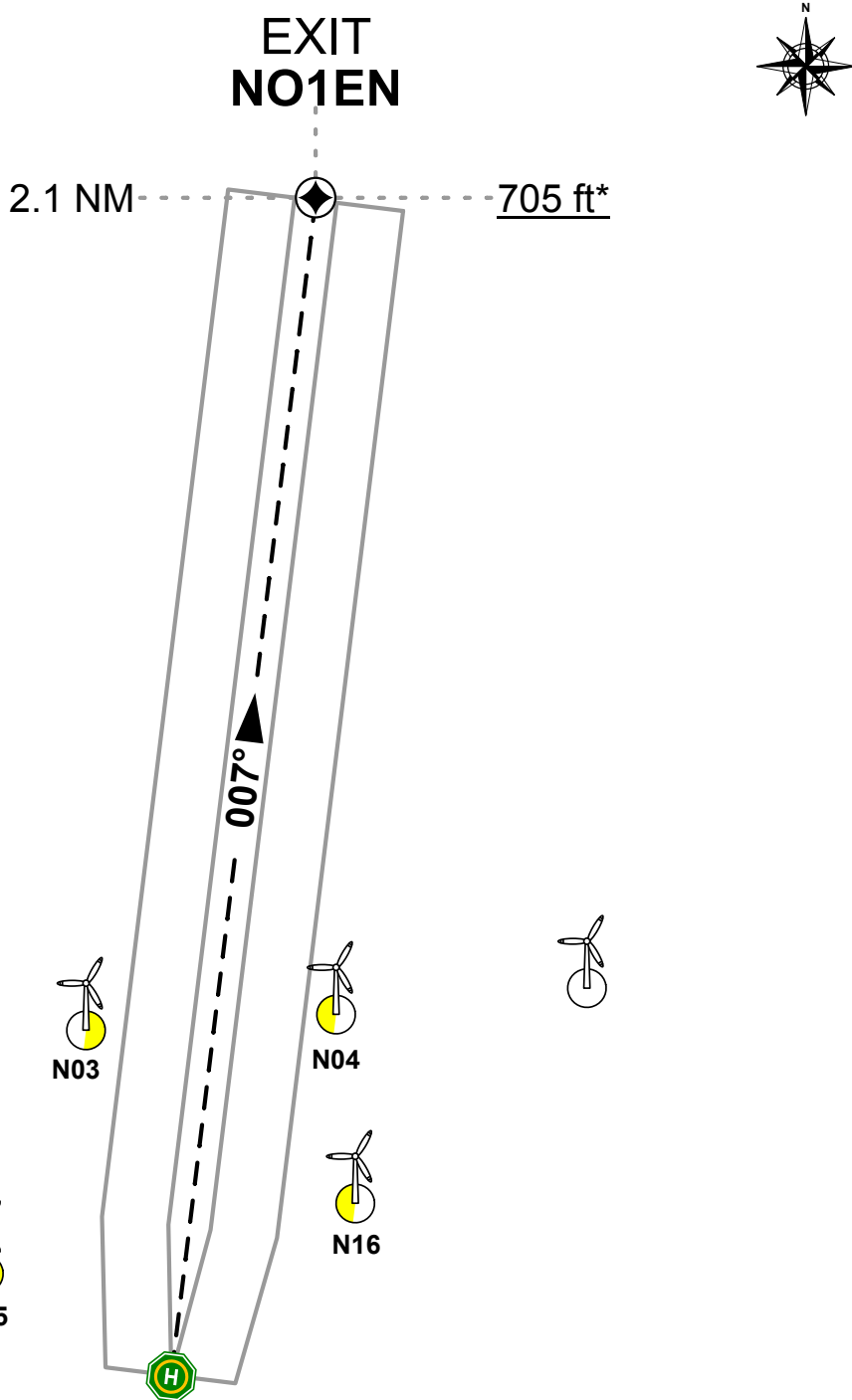
N 54° 01.02'

E 006° 50.61'

DEPARTURE PROCEDURE

- DEPART ON TRACK 007°
- OBSTACLE-FREE WHEN WITHIN DEPARTURE CORRIDOR
- ABOVE WTG HEIGHT WHEN PASSING 505 ft MSL
- CORRIDOR DESIGNED TO REACH 200 ft ABOVE WTG HEIGHT AT EXIT POINT NO1EN (4.5% CLIMB RATE)

DEPARTURE TOP VIEW



*200 ft above WTG